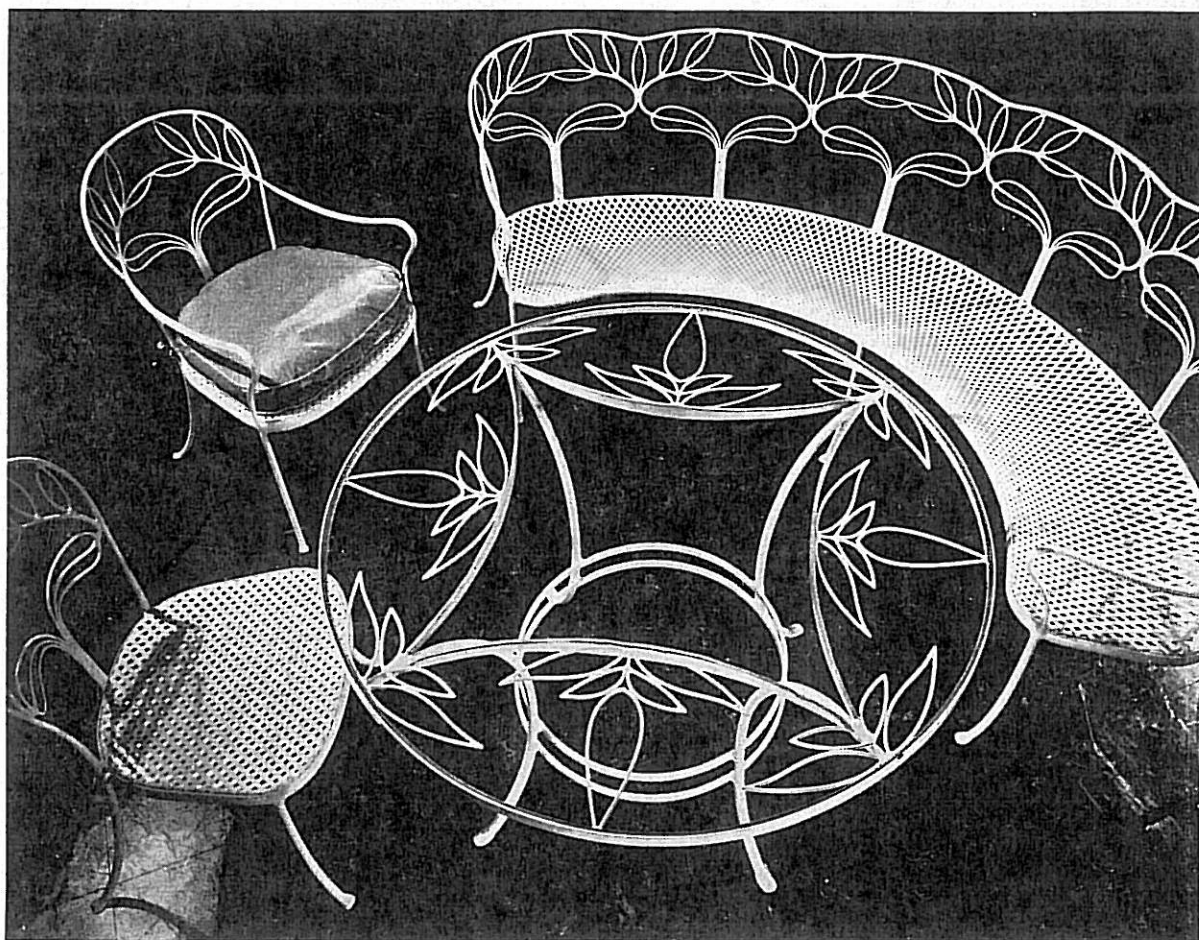


The "TREE OF LIFE", that famously symbolic and perennially beautiful design, blossoms, this present Spring, into one of its loveliest and most appropriate versions — the new Leinfelder ensemble shown below. Description and prices on first page inside.



the
1936
line
of

JOS. J. LEINFELDER & SONS

FINE WROUGHT IRON & WIRE FOR
GARDEN, TERRACE & SOLARIUM

presented &
sold only by

MARY RYAN

225 FIFTH AVE., N. Y.

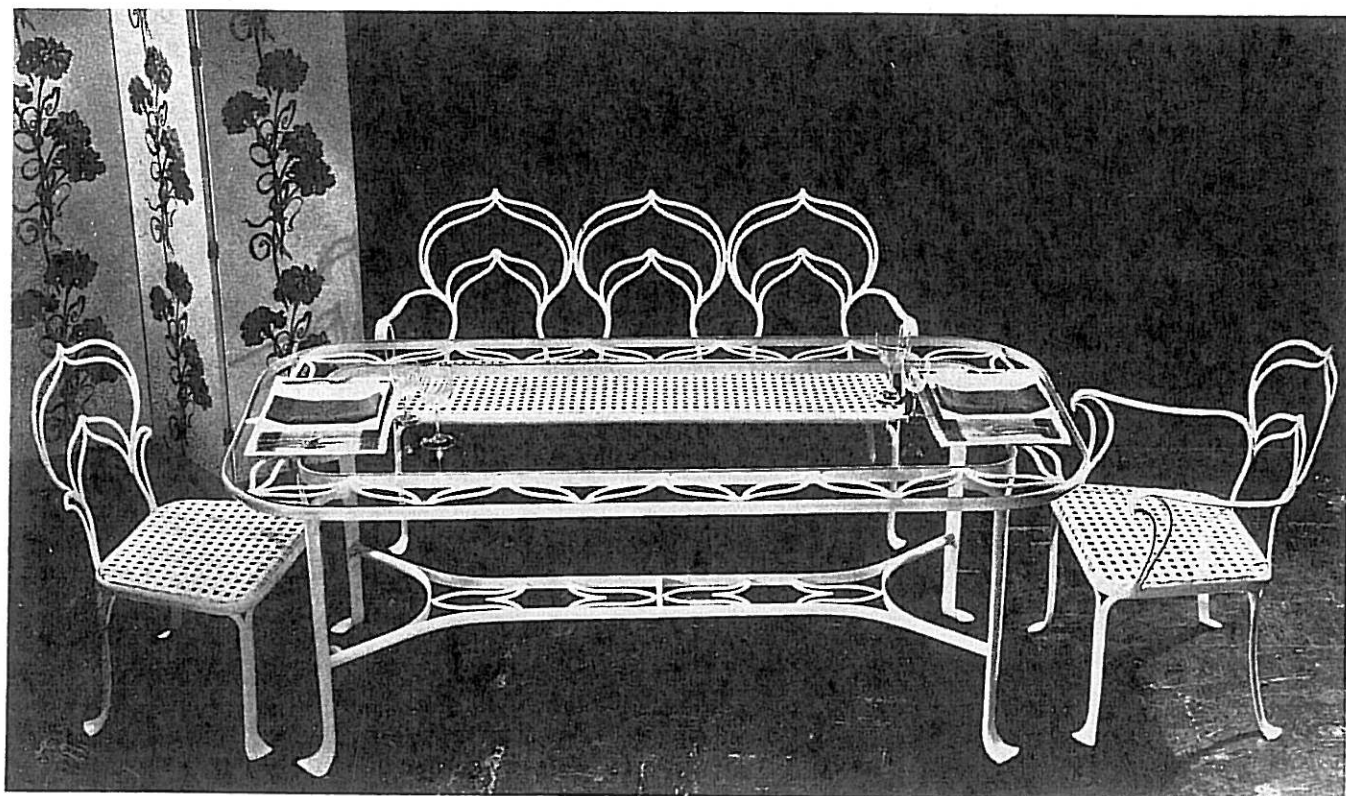
MERCHANDISE MART, CHICAGO

SIX NEW ENSEMBLES THIS SEASON

Also New Individual Pieces--and 1936 Colors!

We believe you will find this catalogue to be the most interesting we have ever published. It includes, for example, **fourteen complete, livable ensembles**, ranging from the very simple to the highly decorative. The appeal of these designs is heightened by the fact that they are originals—designs, in all cases, exclusive with and COPYRIGHTED* by Jos. J. Leinfelder & Sons.

* (Infringements will be prosecuted)



"TREE OF LIFE" ENSEMBLE ON COVER

'The loveliest design ever made in iron'—and extremely **comfortable**—especially with the Lustresheen pads, one of which is shown in the picture on the cover.

T-214A table shown on cover—29 ins. high, 48 ins. diameter. Complete with glass, \$82.00. Frame only, \$46.00. T-214B table, not shown—60 ins. diameter. Complete, \$130.00. Frame only, \$76.00....CH-56A side chair \$26.00...CH-56B arm chair, \$30.00. Lustresheen pads in any color, \$6.00 each...CH-56C semi-circular bench, \$98.00. CH-56D (not shown) quarter-circular bench, \$52.00

FORMAL REGENCY GROUP IN PHOTOGRAPH ABOVE:

Perfect for making an enclosed porch, in town or country, into a 'Summer dining pavilion in the manner of the Regency'!

T213A table, 74x36 is priced \$125, complete—or \$80.00 for the frame only.

CH-50A, side chair, \$25.50.....

CH-50B, arm chair, \$28.50.

CH-50C settee, \$56.00. Strongly built with laced metal seats.

"VICTORIA REGINA" SUITE--Queenly in Grace and Comfort

CH-54D

T-217B

CH-54C

Interlacing wickets make the lovely, fan-shaped backs, and rounds of padded white fabricoid form the generously wide, deep seats. Where has there ever been, before, so attractive an alliance between restfulness and romance in a garden grouping!

Please particularly notice the extra-wide arm chair, No. CH-54D, in the photograph at right . . . and the very Victorian serpentine settee, combining cordiality with caution in the proper 19th-Century manner.



Shown in photograph above:

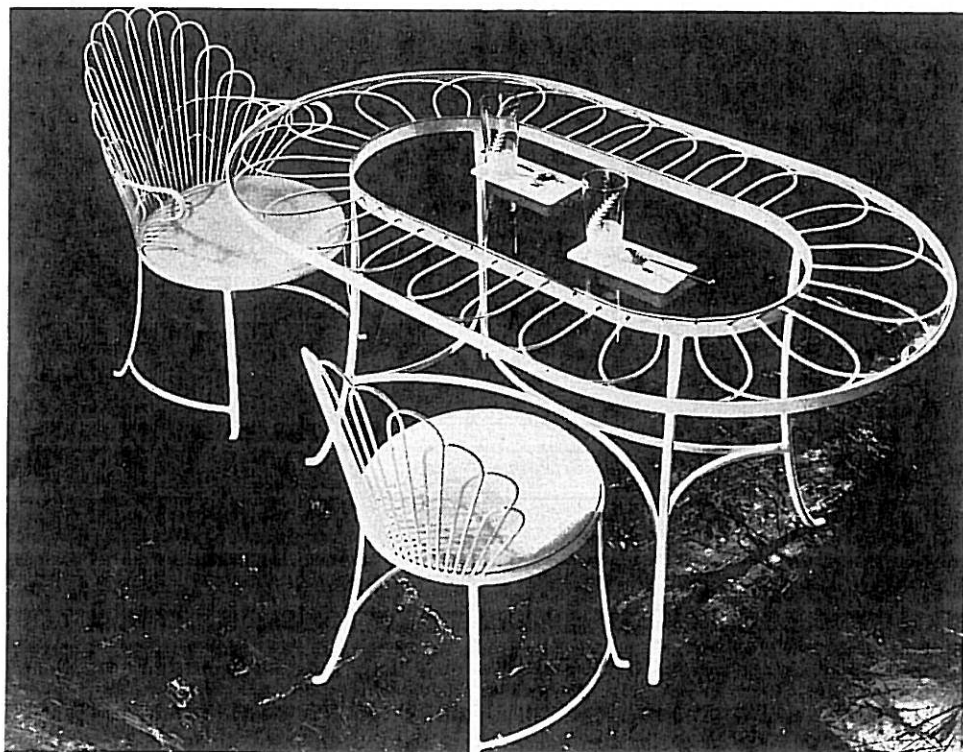
The serpentine settee, which might be called "Three's Company", is No. CH-54C and is priced \$49.00, with white fabricoid seat.

CH-54D large arm chair, \$30.
T-217B table, 42 ins. dia., complete, \$44.. frame only, \$28.. Frame with space for umbrella, T-217F complete \$51.00, frame only \$34.00 each.

Shown in photograph at left:

No. T-217 A table, 60x36 ins. — complete with glass, \$54.50, frame only, \$35.50.

CH-54B arm chair, \$22.50.
CH-54A side chair, \$18.00.



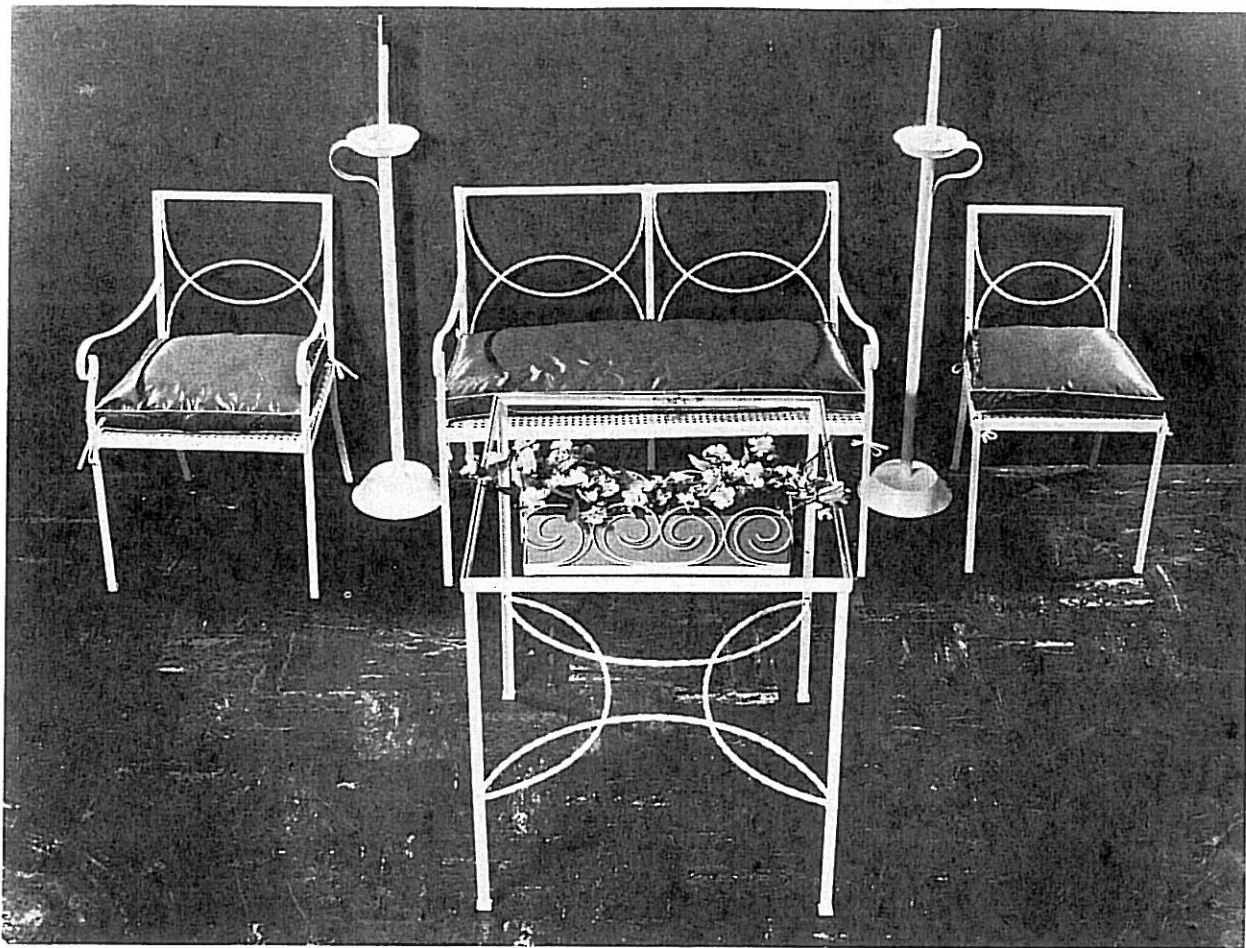
CH-54A

CH-54B

T-217A

ALL PRICES QUOTED ARE RETAIL

MARY RYAN—1936



CH-55B, Chair.

CH-55C, Settee.

T-218B, Table.

F-758C, Flower Box.

CH-55A, Chair.

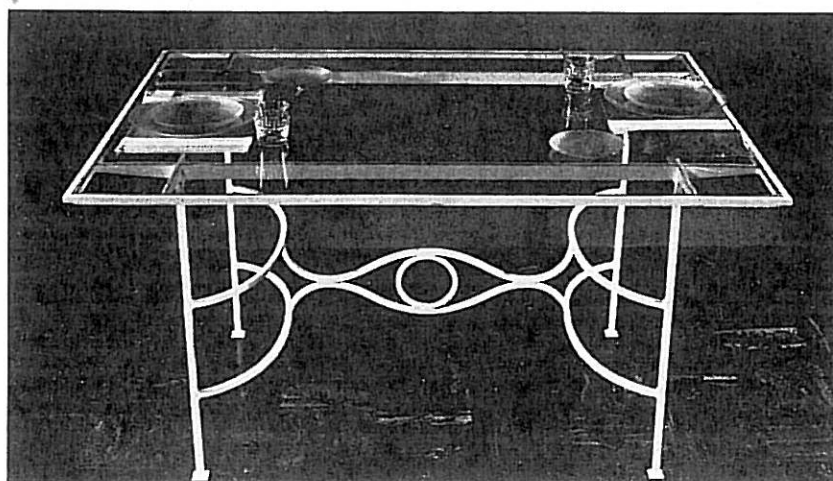
TRIM LINES IN A 'YACHT-SIZE' GROUP

There's nothing too "saltily" nautical about this well-tailored new ensemble, with its strong but light "metal cane" seats and metal rope motif. It's geared in scale and spirit to sailing on the nattiest of crafts. Yet, it's equally at home on terra firma—both in white and in colors.

Table T-218B, 26 ins. sq., is priced complete, \$20.00; frame only, \$14.00. CH-55A, side chair, \$12.50. CH-55B, arm chair, \$16.50. (Lustresheen pad adds \$5.00 each extra). CH-55C, settee, \$25.00 (Lustresheen pad, \$8.00). F-758C, flower box, \$5.50 each; in lots of 6, \$4.70 ea.; in full dozen lots, \$4.00 each.

The Hurricane Floor Lamp shown in the photograph above is No. 180 in the WARREN KESSLER line, sold exclusively by Mary Ryan. Price \$10.00.

• O.B. New York.



THE TABLE OF THE YEAR!

X Ideal not only in design (affording generous knee room), but in proportion (top is 40x54 ins.) and in value. No. T-191C table, shown at left, is priced \$67.00 complete; frame only, \$36.

"LOTUS SPIRAL" PRESENTS A NEW MOOD IN GLAMOUR

Nine different units compose this distinguished new ensemble, and permit a variety of hospitable groupings—each more decorative than the last!

In the upper picture one sees a sophisticated "social circle" comprised of:

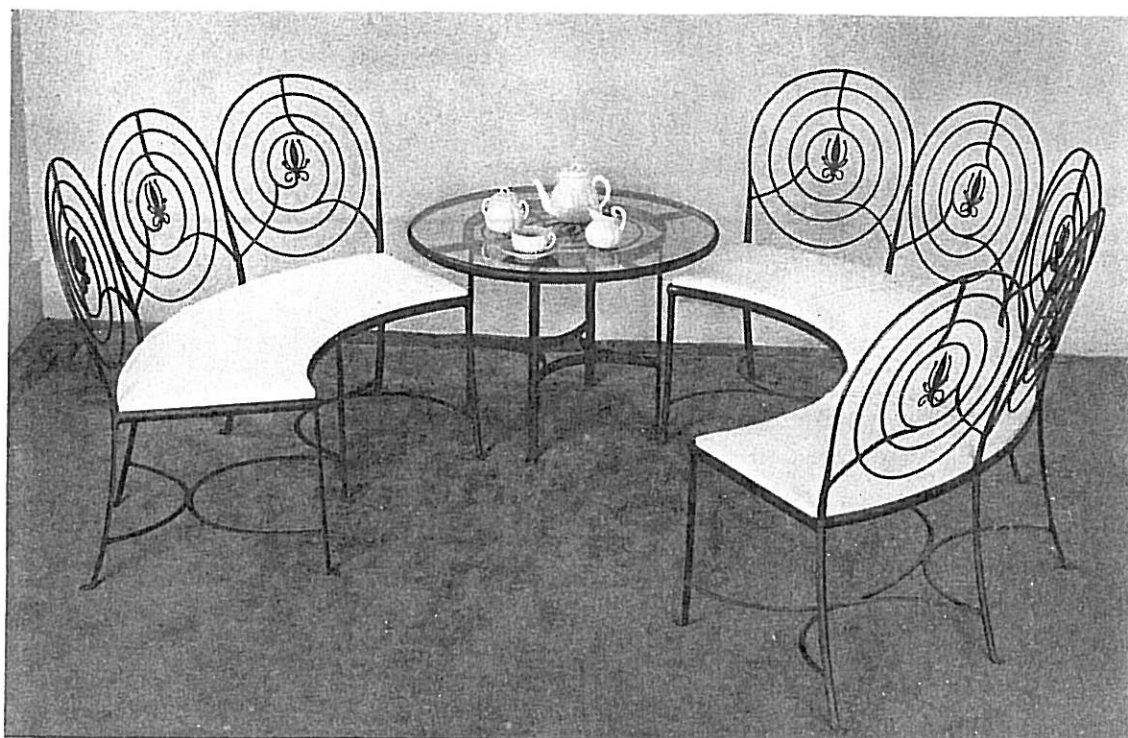
CH-52D, 5 seat bench without arms \$86.00

(CH-52E, with arms \$90.00)

CH-52F, 3 seat settee without arms \$50.00 . . .

T-215C table, 30 ins. dia., at \$25 complete.

(\$18.00 for frame only).



No. CH-52F.
three-seat settee.

No. T-215C.
30-inch table.

No. CH-52E.
five-seat settee.

In the lower picture CH-52F, settee is shown placed as it is designed to be used—i.e., at the table ends, (which, with two chairs at either side permits comfortable seating of eight persons). T-215A table, 84 x 42 ins. at \$138. complete, or \$86. for frame only. . .

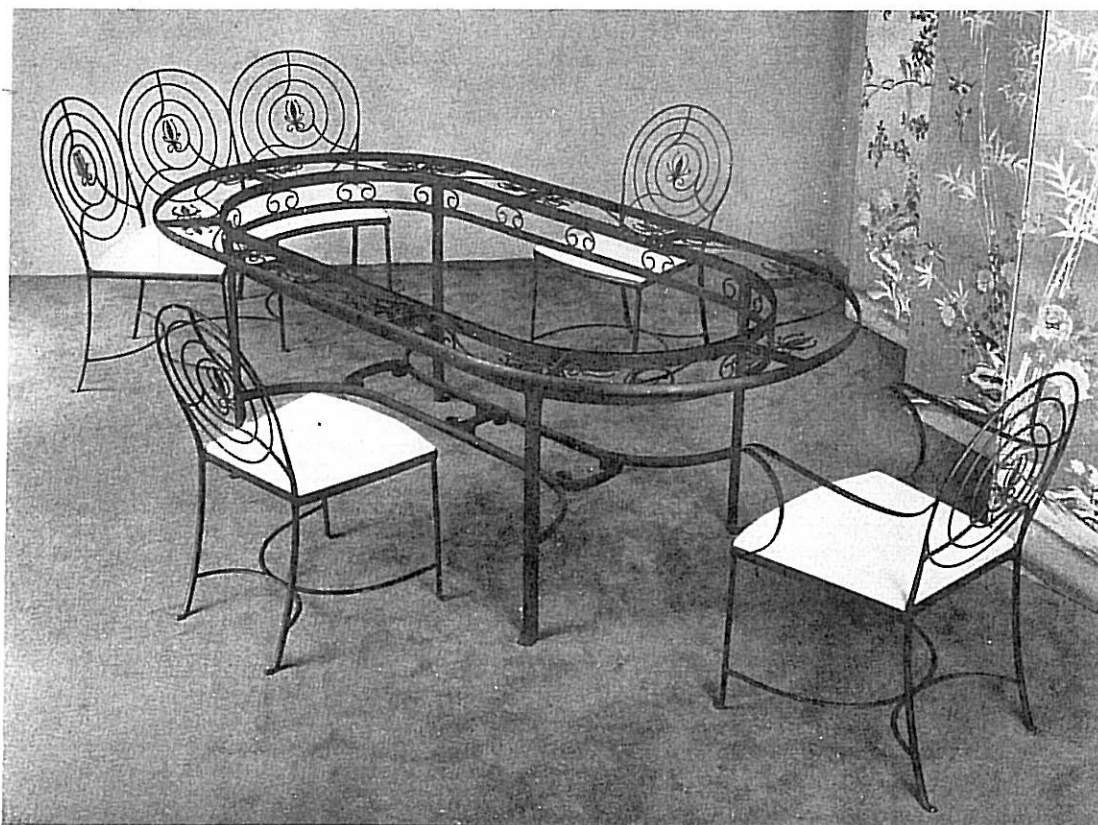
CH-52A side chair, \$18.

CH-52B arm chair, \$22.

CH-52C, 2 seat settee (not shown) \$40.

Round table T-215D, 48" dia. \$92 complete, frame only \$56. Same with holder for umbrella (not illustrated).

T-215F, at \$98. with glass — \$60 for frame only.



(in background) CH-52F.
No. CH-52A, side chair.

T-215A, table.
84 x 42 inches.

No. CH-52B.
arm chair.

ALL PRICES QUOTED ARE RETAIL

MARY RYAN—1936

Sheraton

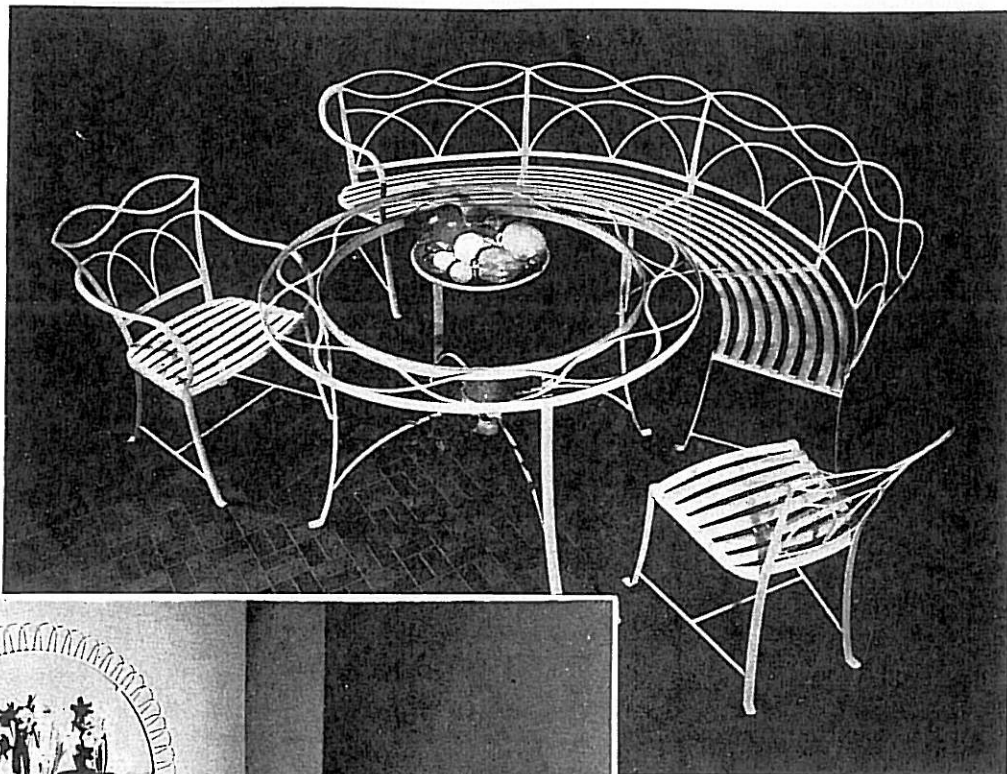
CH-37C bench, shown, \$77.

CH-37D, quarter-circle bench with two arms (not shown), \$47 . . CH-37A side chair, \$16 (\$15.50 doz. lots).

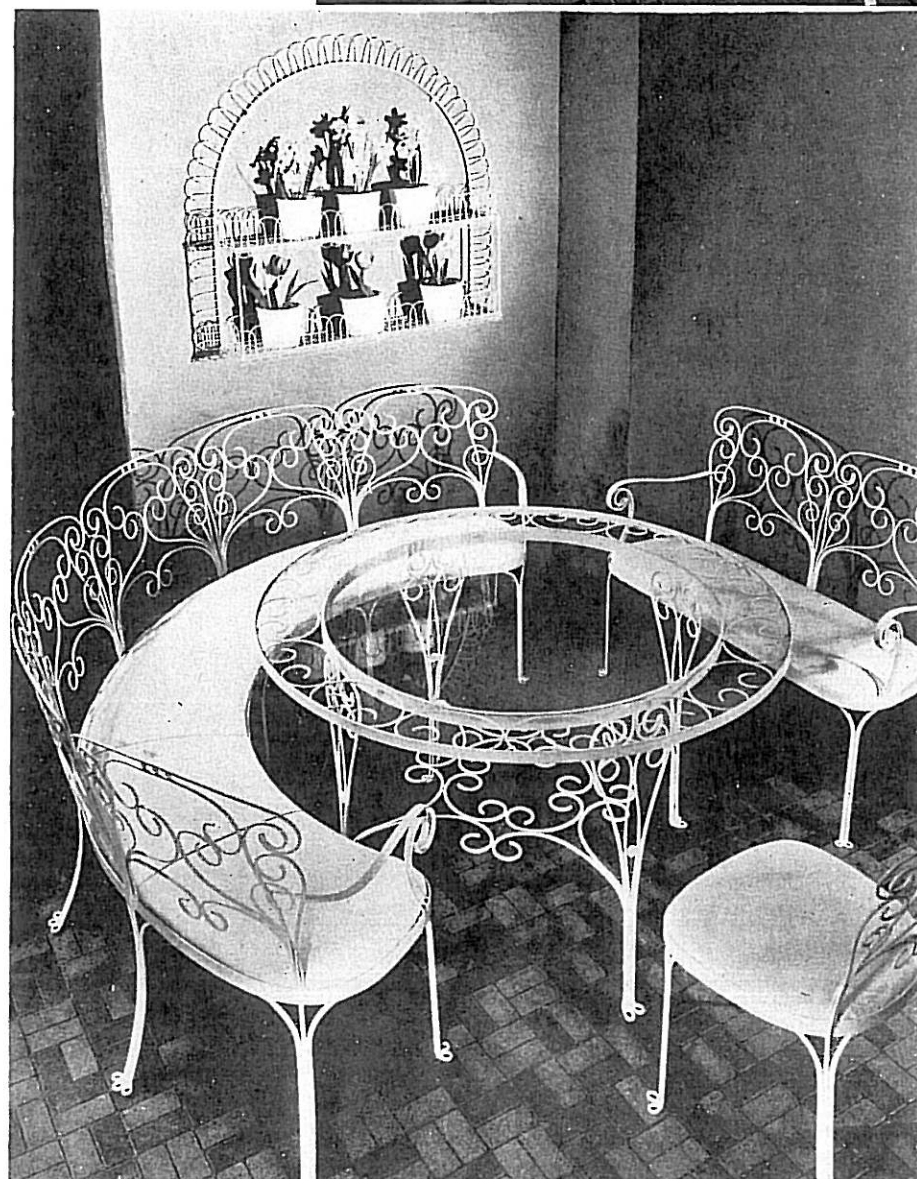
CH-37B arm chair, \$19.50

CH-37E (not shown) Three seat circular settee, \$64 ea. CH-37G, large size arm chair \$20.50 . . T-176 table, 48 ins. dia., complete, \$68. Frame only, \$32. T-176B 36" dia. table (not shown) complete \$38.50, frame only \$29.

Hanging Shelf, F-743
36 ins. wide, 38 ins. high



CH-37 series with T-176 table.



Semi-circular Bench, CH-48E.
116 ins. long

Round Table, T-206.
48 ins. diameter.

Settee, CH-48C.
41 ins. long.

Side Chair,
CH-48A.

TWO MORE CIRCULAR ENSEMBLES

Victorian

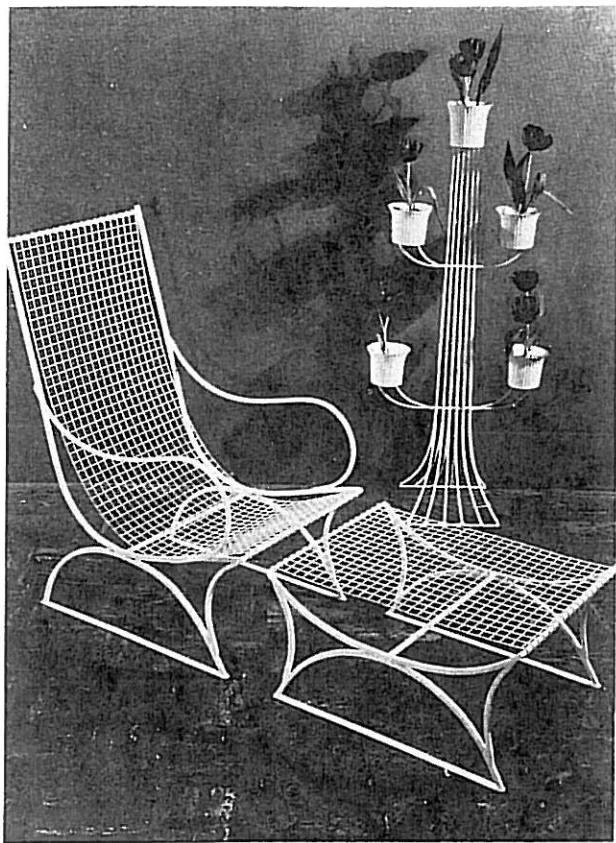
Anyone who's thinking of having a garden party this summer really needs this furniture! No less practical than pictorial, and appropriate to indoor as well as outdoor settings.

Table T-206, is priced, with glass, \$78; frame only, \$42. T-206B (not shown) 36" dia., complete \$53.00, frame only \$36.00. Semi-circular Bench, CH-48E, \$110 . . .

Small settee, CH-48C, \$38. Side chair, CH-48A, \$17.00. Arm chair, CH-48B, \$22.00. The hanging shelf is \$15. The flower pots, \$10 doz. extra. CH-48D (not shown) quarter circular settee, \$56.00.

MOST VERSATILE OF LOUNGE ENSEMBLES

Very smartly designed, very moderately priced . . . comfortable with or without cushions . . . practical indoors or out.



In photo above:

Arm chair, CH-40G, \$18.00 . . .

In lots of 6 \$15.00

H a s s o c k , CH-40H, \$10 . . .

In lots of 6 \$8.00

Plant stand F-741, \$13. In pairs, \$12 each.



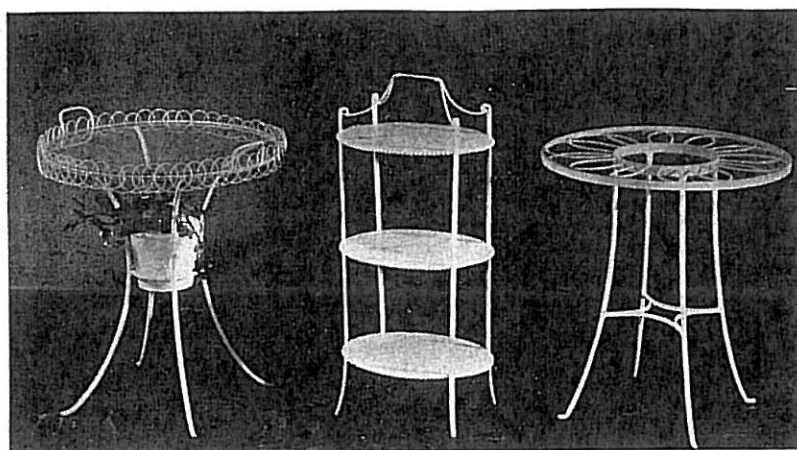
In photograph above: Table T-142A, 25 x 47 ins., \$28 complete; frame only, \$19. Flower pot, F-80, \$1 extra . . . Settee CH-40C, 40 ins., \$26.50. Bench CH-40F, \$6.50; in lots of 12, \$5.50; in lots of 25, \$5.

In photograph below: Arm chair CH-40B, \$11.50 (or \$10.70 in lots of 6). Lustresheen pad, \$4 . . . Coffee table T-184C, 30 x 17 ins., 20 ins. high, \$22 . . . Side chair CH-40A, \$10, \$8 in lots of 6 . . . Chaise longue, 62 ins. long, 22 ins. wide—CH-40D, \$31. Lustresheen pad, \$14.



ALL PRICES QUOTED ARE RETAIL

MARY RYAN—1936



T-210A F-80

T-186

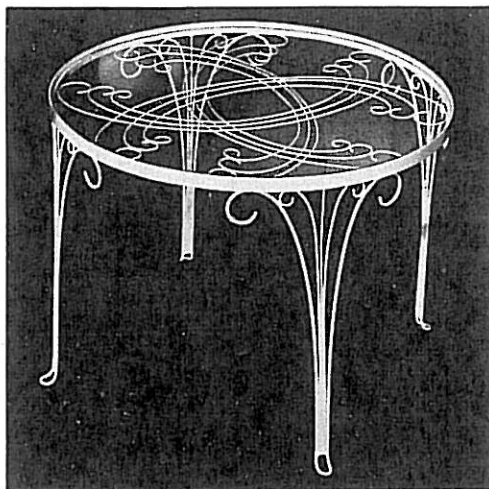
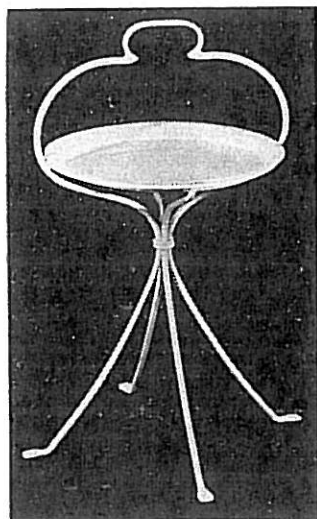
T-217D

Photographed above: Table with removable tray, 18 ins. dia., 21 $\frac{3}{4}$ ins. high (T-210A), \$7.50 complete; doz. lots, \$7; lots of 25, \$6.80. Frame only, \$5.20; dozens, \$4.70; Lots of 25, \$4.50... Three-tier muffin table T-186, 26 $\frac{1}{2}$ ins. high, 9 x 12 top, \$7.50.

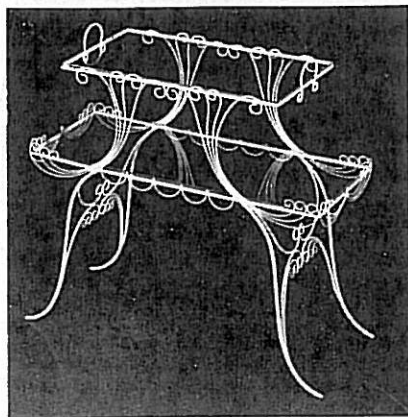
Low lounge table T-195, at right, is the perfect size and height for any beverage service — or for magazines and ash trays. 30 inches dia., 21 $\frac{1}{2}$ ins. high. Complete with glass, \$27. Frame only, \$20.

T-145 handled table below, has a removable tray 14 ins. in diameter. Priced \$6. each; \$5.50 in doz. lots. \$5.30 lots of 25.

T-145

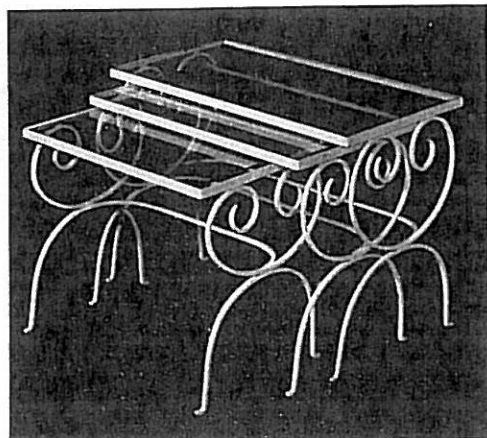


T-195



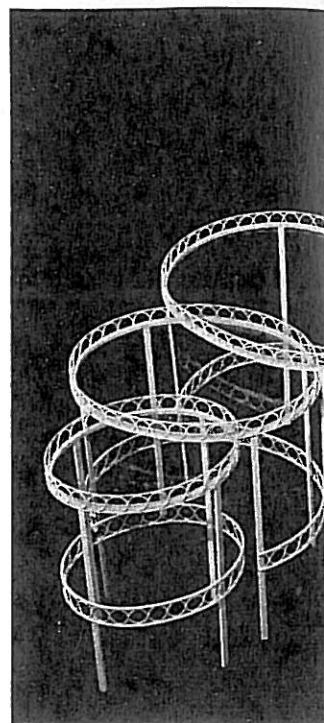
T-189

T-189 two-tier table has shelves 12 x 27 ins. and 12 x 20 ins. 16 inches high. Complete with glass, \$29.30; frame only, \$24.



T-170

Just at left: New table T-217D is splendid in value. It's 20 $\frac{1}{2}$ ins. high, 18 $\frac{1}{4}$ ins. dia., Complete, \$7.30; frame only, \$5. Frame only in doz. lots, \$4.50 ea. lots of 25, \$4 ea. glass \$2.30 extra.



T-200

EIGHT PERFECT MEANS TO EASY SUMMER SERVICE

The two nests of tables are best sellers among the ranks of Lein-felder classics.

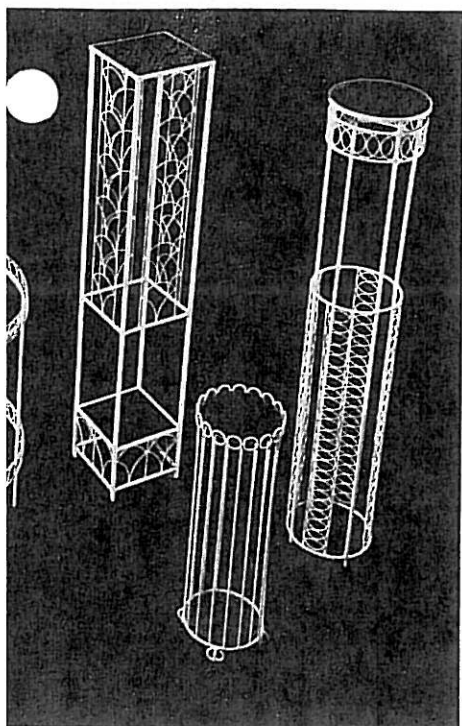
No. T-200 (above) consists of three oval tables, the largest being 24 $\frac{1}{2}$ x 19 x 22 $\frac{1}{2}$ ins. With glass, \$28.50. Frames only, \$22.

No. T-170 (below) consists of three oblong tables, the largest of which is 24 x 14 x 19 $\frac{1}{2}$ ins. With glass, \$24.50. Frames only, \$18.00.



Two-tier (above), ins. high \$19.50; extra.*

ALL PRICES &



F-739

S-64

F-740

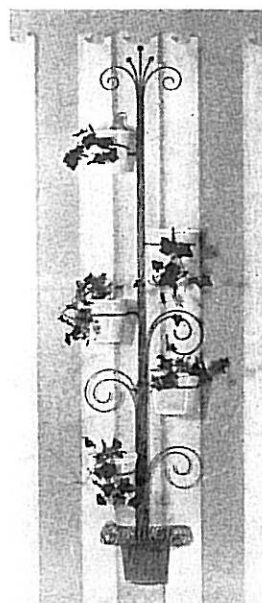
The three very smart plant stands in photograph at left are, definitely, year-around pieces of infinite decorative value.

F-739, 40 ins. high, 7 ins. sq., complete with blue glass top and base, \$16.

S-64, 20 ins. high, 6 ins. dia., complete with blue glass top and base, \$8.50.

F-740, 40 ins. high, 7 ins. sq., complete with blue glass at top only, \$16.

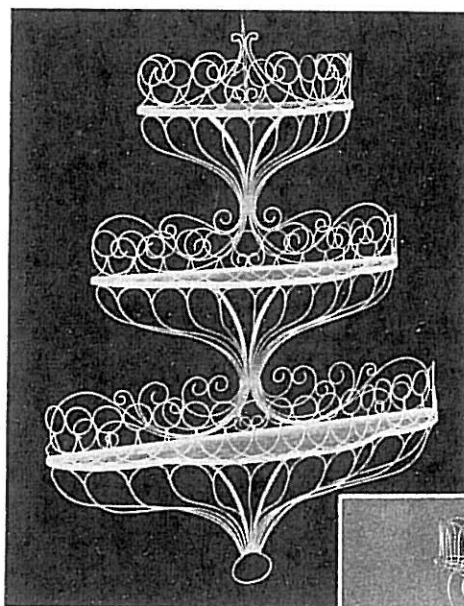
F-753



Left: This delightful new wall bracket, F-753, is formed by multiple strands of wire with curled-edge base suggesting a flower pot. Stunning in black or new, deep Haiti blue or Regency green. \$10 each; \$9 ea. in pairs. Pot F-80, \$1 ea. extra. (\$10 doz.)

*ALL POTS COST EXTRA. See page 14 for details.

F-735



F-735, large wire wall rack (at left) is 55 inches high and 42 ins. wide. \$45.

F-701B, wire wall stand (just below) is 49 ins. high and priced \$29.50.

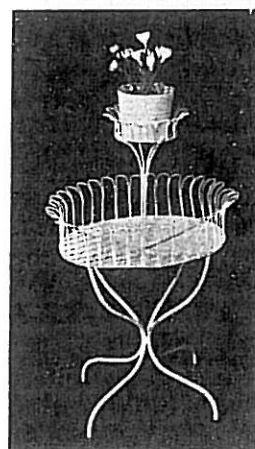
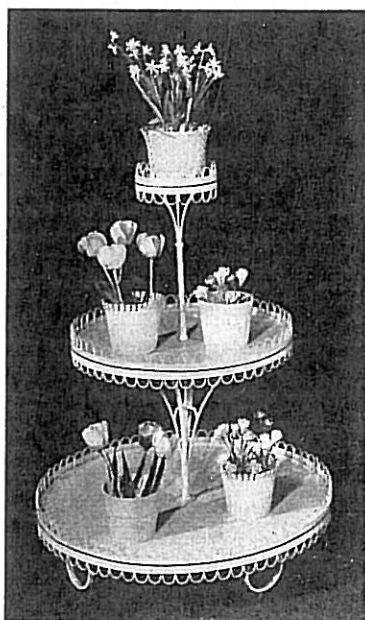
F-701 (not shown) complete circle same height as above \$43.00.

NINE WAYS OF USING PLANTS IN DECORATION

Tiered and galleried stands for placing out in a room are particularly versatile, and much in fashion now. F-733A (just below), is 47 ins. high, priced \$37. POTS ARE EXTRA.*

F-660 (center, below), is 31 ins. high. \$11 ea., \$10 ea. in pairs.

F-733A



F-660



F-701B



stand
8 ins., 35
priced
Pots

D ARE RETAIL

MARY RYAN—1936

SUITES BEAUTIFULLY ADAPTED TO ALL-YEAR USE, Indoors

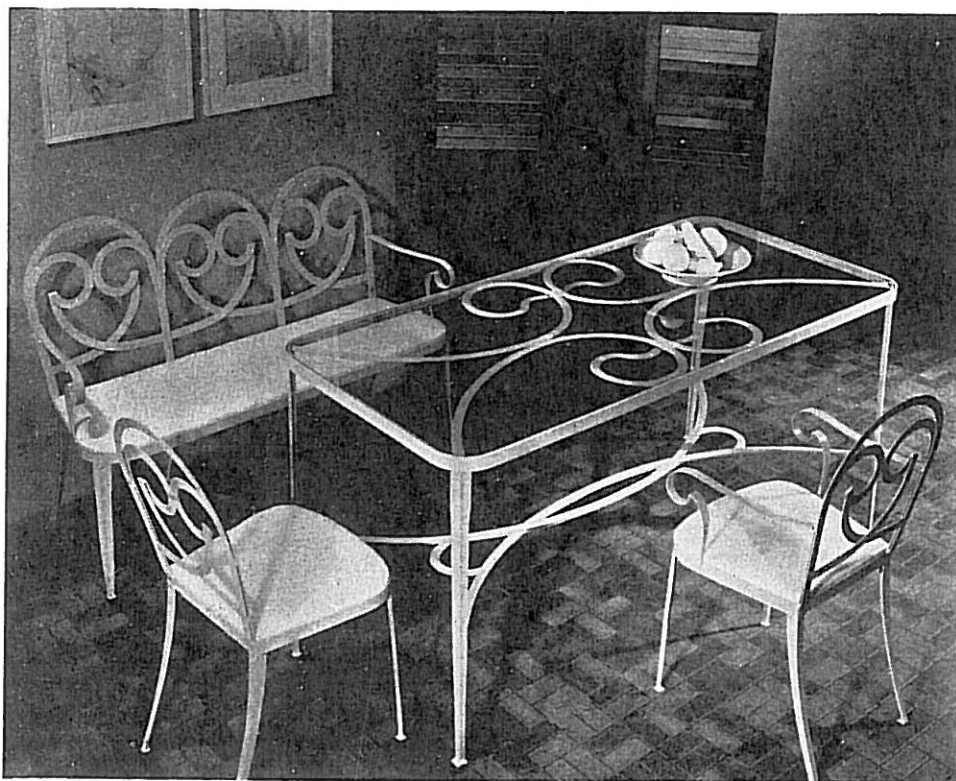
UPON this and several pages following, we show numbers in the Leinfelder line that are primarily designed for use indoors. The exceptionally fine, fastidious workmanship, as well as the rare distinction of design typical of Leinfelder iron and wire furniture and accessories, give these things an air of importance comparable with that of fine wood pieces. Witness, the two groups appearing on this page!

Side Chair, CH-46A.

Arm Chair, CH-46B.

Settee, CH-46C.

Table, T-205.

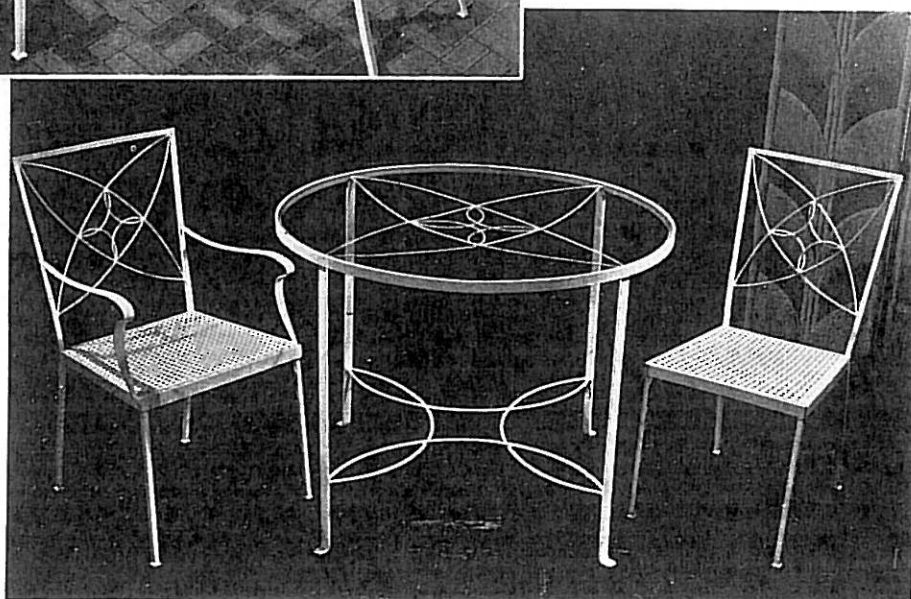


RIBBONS OF WIRE — 6-ply for breadth and beauty—draw the strong but elegant outlines of this formal dining and living group (left). The 45-in. settee, CH-46C, \$43..... Arm chair, CH-46B, \$24... Side chair, CH-46A, \$21.... The table, T-205 is 28x60 ins. and priced complete with glass, \$72.50; frame only, \$45.50.

SLIM ARCS OF WIRE are decoratively reinforced at the center to make chair-backs and table-top of this smart ensemble (right).

CH-47A side chair, \$12; in doz. lots, \$11.50 each.

CH-47B arm chair, \$15.50; in doz. lots, \$14.60... T-204 table, 36½ ins. dia., \$27.50 complete; frame only, \$18.



Arm Chair, CH-47B.

Table, T-204.

Side Chair, CH-47A.

Classic-Sheraton in 'Period'--Contemporary in Livability

SELDOM if ever have the streamline grace and 'swift serenity' of the age of classicism been caught so precisely and fitted to the measure of modern estimates of comfort and compactness! As a result, this ensemble is equally suited to terrace or dining room — and the settee and smaller table are perfect also for the modern foyer. You will find it effective in white, black, or any of the Leinfelder colors for 1936.

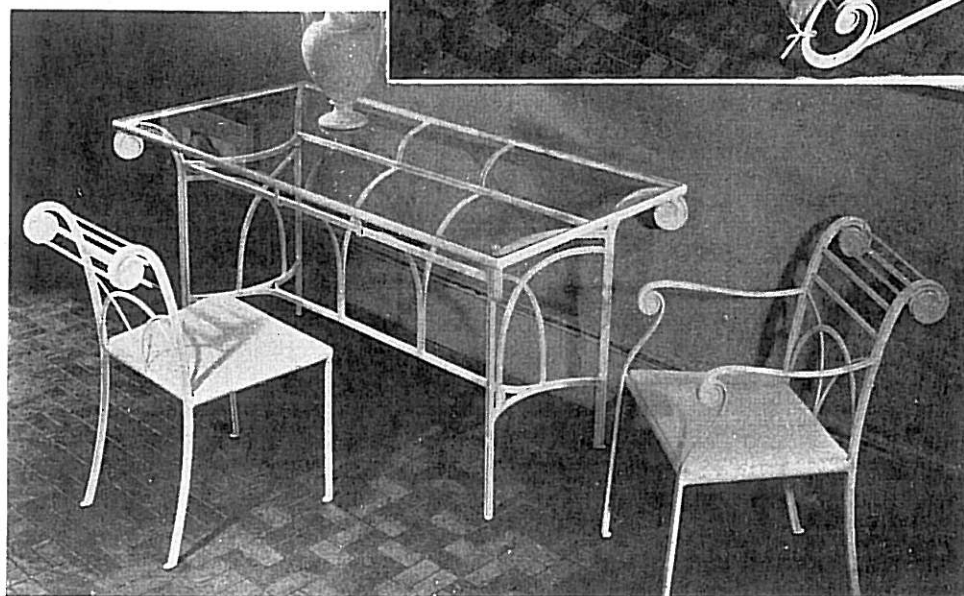
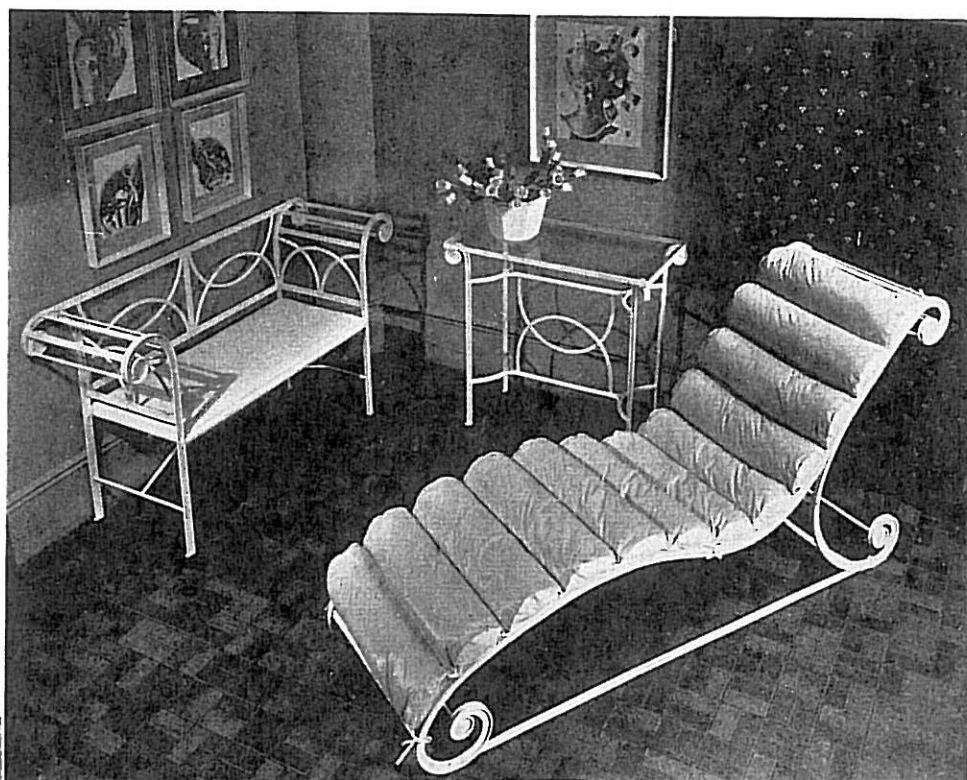
Settee, CH-44E.

Table, T-209

Chaise Longue, CH-44F.

SHOWN AT RIGHT:

Derived from an original Sheraton design, this 33-in. settee, CH-44E, is both 'period' and modern. Use it singly or in pairs. Priced \$57. . . Table T-209, is 16x30 ins., priced \$35 with glass; frame only, \$31 . . . Chaise longue, CH-44F, \$79. Cartridge roll in Lustresheen, \$14. (F.O.B. Newark, N. J.)



Side Chair, CH-44B

Table, T-208.

Arm Chair, CH-44C.

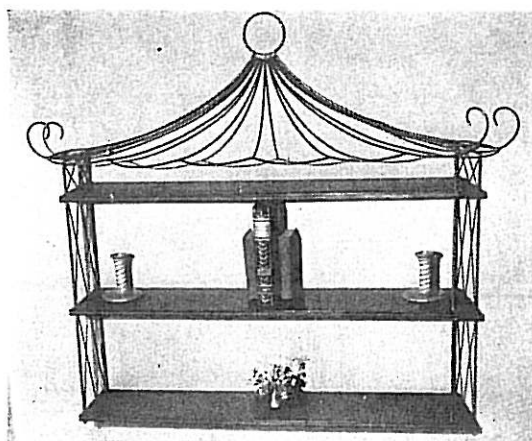
SHOWN AT LEFT:

Table, T-208, 28x60 ins., priced \$91, complete: frame only, \$64. Side chair, CH-44B, \$26. . . . Arm chair, CH-44C, \$32.

Try this ensemble in our rich, verdant "Regency green", with white Lustresheen seats!

ALL PRICES QUOTED ARE RETAIL

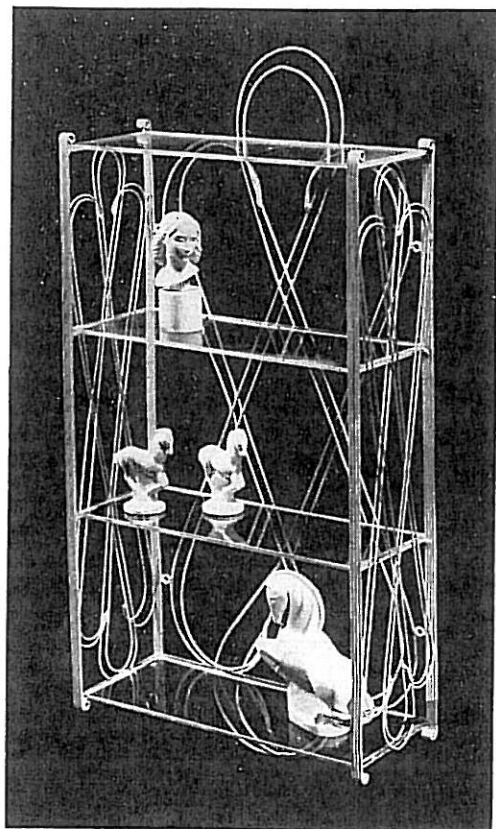
MARY RYAN—1936



WB-4

Chinese pagoda-top shelves, WB-4 (above), lend crisp and airy accent to a Chippendale room. Width 33 inches. Price, \$18.

Lovely "swoops" of wire create the smartest of large hanging shelves. WB-6 (below) is 17½ x 30 ins., and is priced \$26, complete with 4 glass shelves. Frame only, \$18.



WB-6

DECORATIVE WIRE SHELVES AND MAGAZINE HOLDERS

Lightness, strength, and loveliness in silhouette are the three first requisites for successful magazine racks—or, by the same token, for successful hanging shelves. It is logical, therefore, that the six pieces upon this page should enjoy (as they do!) an exceptional degree of popularity.

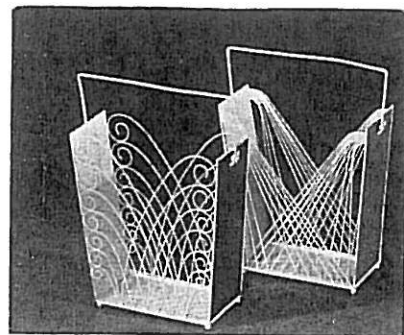
They are classic in white, but we suggest you use them, also, **in colors.** Haiti blue, Regency green, and black are new. . . chartreuse, turquoise, pink, and yellow are also much in vogue.



WB-2

Directoire shelves WB-2 (at left) can be charmingly used in a French provincial, Early American, or Colonial room. Width, 26 inches. Price, \$12.

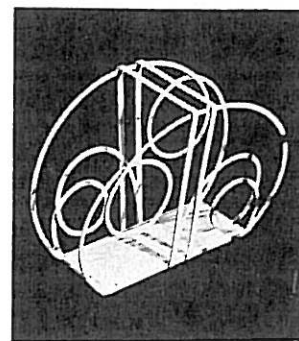
Laced and feather themes in magazine racks prove a joy in use, for they're soundly based and as strong as they are graceful. M-43, in 'Feather' motif, is 20 ins. high and priced \$7.50, or \$7 in dozen lots. M-44, 'Laced', is the same height and price.



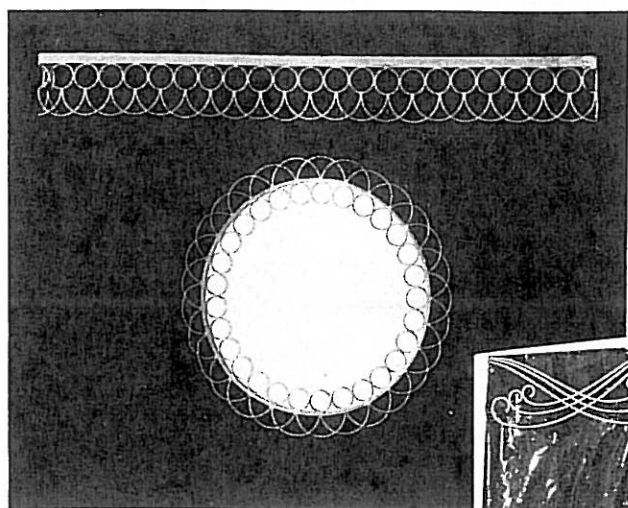
M-43

M-44

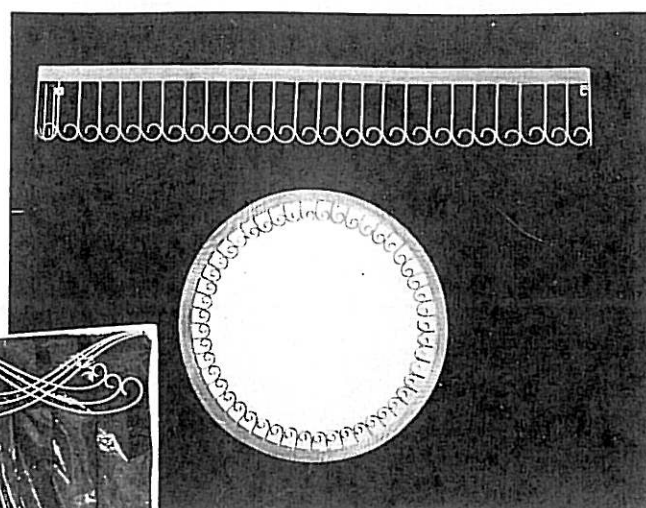
'Circles' is the decorative theme of the magazine rack in lower picture—M-47. It is 13 ins. high, and priced \$7.50 each.



M-47



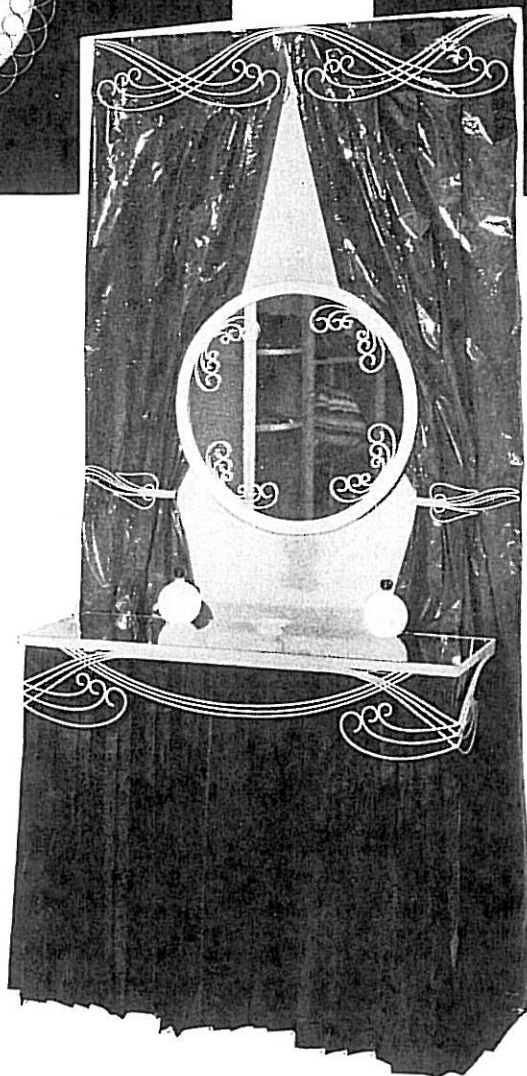
VA-1 . . . MIR-1



VA-3 . . . MIR-4

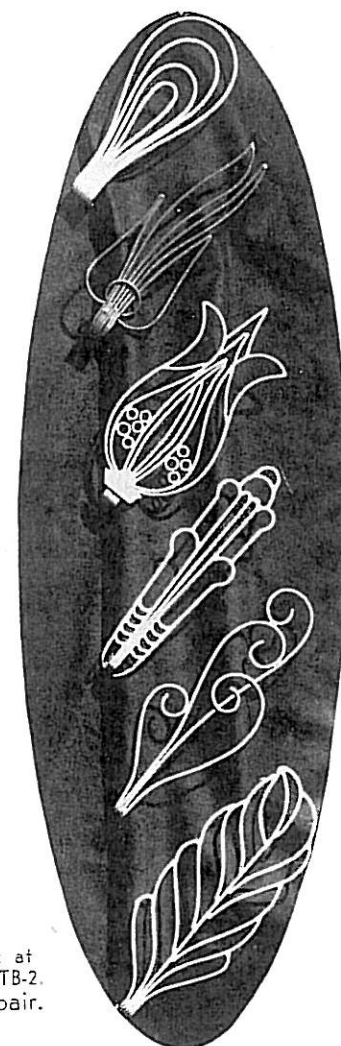
IN SIX DECORATIVE SHADES in addition to WHITE and BLACK — these ensembles are an exciting 'find' for the woman with a liking for individuality, or for the decorator with ideas . . . So much can be done with cornices and tie-backs as simple and yet distinctive as these! And the mirrors to match supply the final 'made-to-order' touch to a bedroom or dressing room scheme.

Order these ensembles in: White, Turquoise, Yellow, Haiti Blue, Regency Green, Pink, Chartreuse, or Black.



VA-2 . . . MIR-3

IN ORDERING CORNICES, BE SURE TO INCLUDE "RETURN" IN MEASUREMENTS.



VA-1 cornice; 5½ ins. wide, \$2 per foot . . . MIR-1 mirror: 24 ins. dia., \$20 complete.

VA-2 cornice; 6¾ ins. wide, \$2 per foot . . . MIR-3 mirror: 21¾ ins. dia., \$20 complete.

VA-3 cornice; 6½ ins. wide, \$2 per foot . . . MIR-4 mirror: 23¾ ins. dia., \$20 complete.

Tie-back at top in photo: TB-3, \$3 pr.

Tie-back at 2nd from top: TB-6, \$3 pr.

Tie-back at 3rd from top: TB-5, \$7 pr.

Tie-back, 3rd from bottom: TB-4, \$7 pr.

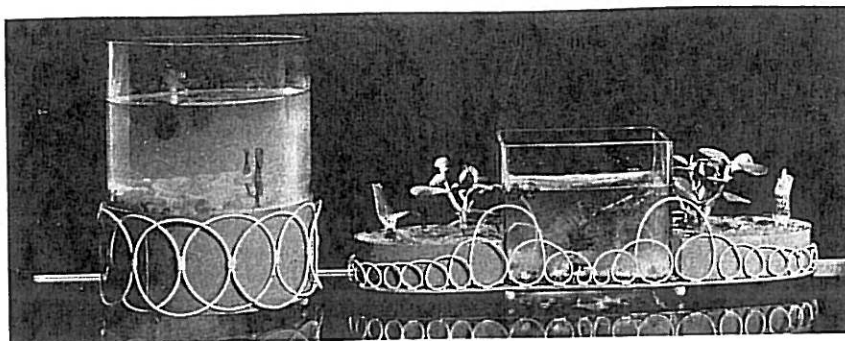
Tie-back, 2nd from bottom: TB-1, \$3 pr.

Tie-back at bottom: TB-2, \$4.50 pair.

ALL PRICES QUOTED ARE RETAIL

MARY RYAN—1936

Cylindrical Aquarium,
GA-30.



Oblong Aquarium and
Flower Box, GA-34.

Containers That Multiply the Decorative Effectiveness of Growing Plants and Bright Fish

FLOWER POTS

Reading from top to bottom, these popular pots, affording choices to fit all Leinfelder plant stands and brackets, are priced as follows:

F-251, 5 ins. dia., 5 ins. high.
\$2 ea; \$18 dozen.

F-77, 5 1/2 ins. diameter 80
cents ea; \$8.00 dozen.

F-80, 5 ins. dia., 5 1/2 ins.
high. \$1 ea; \$10 doz.

F-259, 6 1/2 inches diameter,
\$3.50 each, \$36 a dozen.

F-260, same but 5 1/2 inches
dia., \$3 each, \$30 a dozen.

F-91, 5 1/2 ins. dia., 5 1/2 high.
\$1.50 ea., \$14.00 doz.

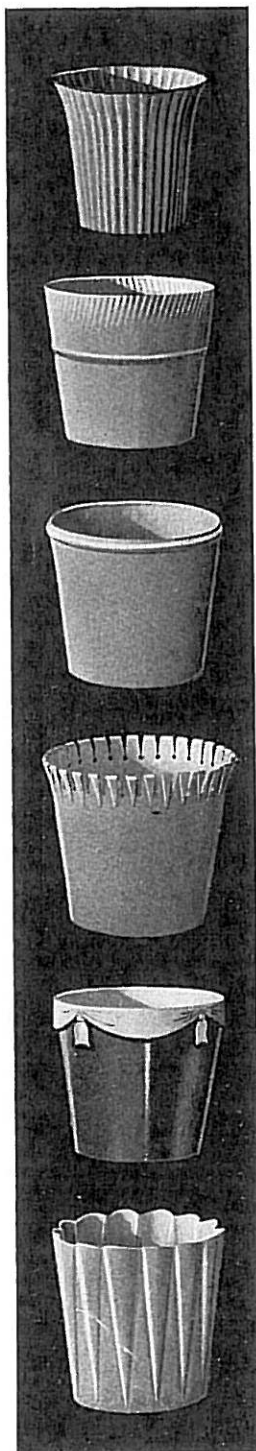
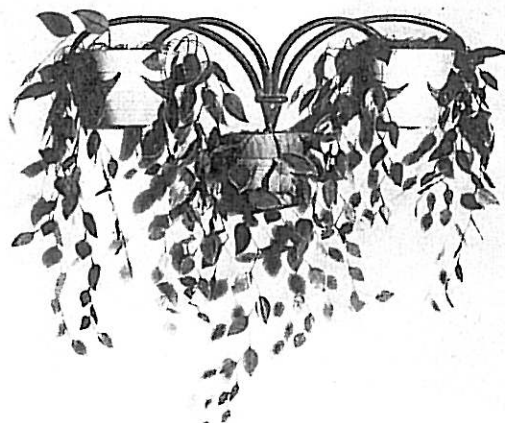
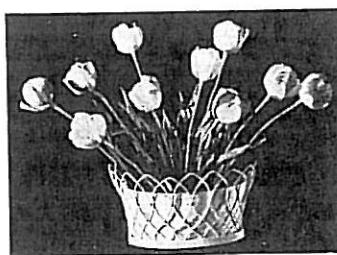


Table Aquaria are their loveliest in these smart wire holders. GA-30 is 8 1/4 ins. in diameter, 11 ins. high. \$11.50, complete with glass... GA-34, combining aquarium with planting dishes, is 19 x 5 ins., and 6 1/2 ins. high. Priced \$12 each complete. \$9 for frame only.



F-673

F-254



Oval wire flower holder, F-254 (at left) is 9 x 12 ins., 6 ins. high. Complete with metal filler, priced \$4.50 each, or \$48 a dozen.

Round wire flower holder to match is F-255 (not shown). Diameter 11 ins., 7 ins. high. \$3.50, or \$36 a dozen.



Wire "fan" ensemble, exquisite in pink, the new Haiti blue, etc. CH-43A, side chair, \$16.00. CH-43B, arm chair, \$19.50. CH-43C, settee (not shown), 41 ins. long, \$35.

Oval table, T-196—30 x 60 ins. Complete with glass, \$72; frame only, \$39. Two planting pans for base, \$5.

THE SUITES THAT STARTED THE NEW MODE IN IRON

Still Lead--in Smartness and in Popularity

"Feather" ensemble, charming in white, turquoise, chartreuse, etc... CH-42C, settee, 41 ins. long, \$30. CH-42A, side chair, \$15.50. CH-42B, arm chair (not illustrated), \$19.

Oblong table, T-193, 60x28 ins., 28 ins. high. Complete with glass, \$63; frame only, \$36.

NOTE: Either ensemble may be had with seats in woven metal or upholstered.



LEINFELDER DESIGNS & COLORS AGAIN MAKE HISTORY

SETTING DECORATING MODES



A NEW 1936 ENSEMBLE, AS SHOWN IN "HOUSE BEAUTIFUL"

This classically simple, new design was chosen to introduce the rich, glowing "Haiti blue" shade that is one of Leinfelder's 1936 prides—it is so distinguished and, at the same time, so gay (and so perfect when used with white!)

CH-53B arm chair, with metal seat, \$21.

Side chair, CH-53A, (not shown), \$14.

Round table, T-216A, 36 ins. dia., \$30.50 complete; \$21, frame only.

T-216 table, 36 x 60 ins. (not shown) is priced \$55 complete; \$36 for frame only.

(The wall bracket, F-753, is shown and described on page 8.)

"HOUSE BEAUTIFUL" PHOTOGRAPHED THIS GROUP FOR A RECENT ISSUE, AND THE ILLUSTRATION HERE IS USED BY COURTESY OF THAT MAGAZINE.

Two years ago, it was Leinfelder iron and wire furniture that introduced the vogue for pink, and for that pale, clear yellow. Last year, Leinfelder led again, featuring Van Gogh type of colors—modern 'high' pastel shades of turquoise and chartreuse.

Now in 1936, Leinfelder is the first to show the deep-bright shades of **Haiti blue** and **Regency green**... and the first, also, to signal the revival of **black** as a high-fashion shade in outdoor and terrace furnishings.

All the pastel colors are as smart as ever, and are being continued. Pink, Yellow, Turquoise, Chartreuse, Haiti Blue, Regency Green, Black—and White: this is the Leinfelder palette for 1936.

White, by the way, is stronger than ever, as an outdoor fashion this season. I would suggest that you so plan stocks as to do even more selling in white garden furniture this year than you did last year. Often, the white frames are strikingly accented with color—in the waterproof materials used in upholstering or for the separate cushions.

And please let me remind you here, that any **chair or settee** in this line may be ordered either with seats upholstered in fabricoid, or with seats of laced metal strips—at the same price.

If you have ready access to a local glazier, by all means get your glass tops from him, making your orders for Leinfelder glass-topped tables read, "**frames only**"; this means economy for you as well as convenience.

Where quantity prices are quoted, the items concerned are numbers which we have found to be especially **popular in re-sale**; the price-advantage of buying more than one piece at a time should therefore be most welcome to you.

Leinfelder merchandise is priced **F. O. B. La Crosse, Wisconsin**, and retail prices are quoted throughout this catalog (**less your customary trade discount**, of course).

"Always at your service,"

Mary Ryan

225 FIFTH AVE., NEW YORK

MERCHANDISE MART, CHICAGO