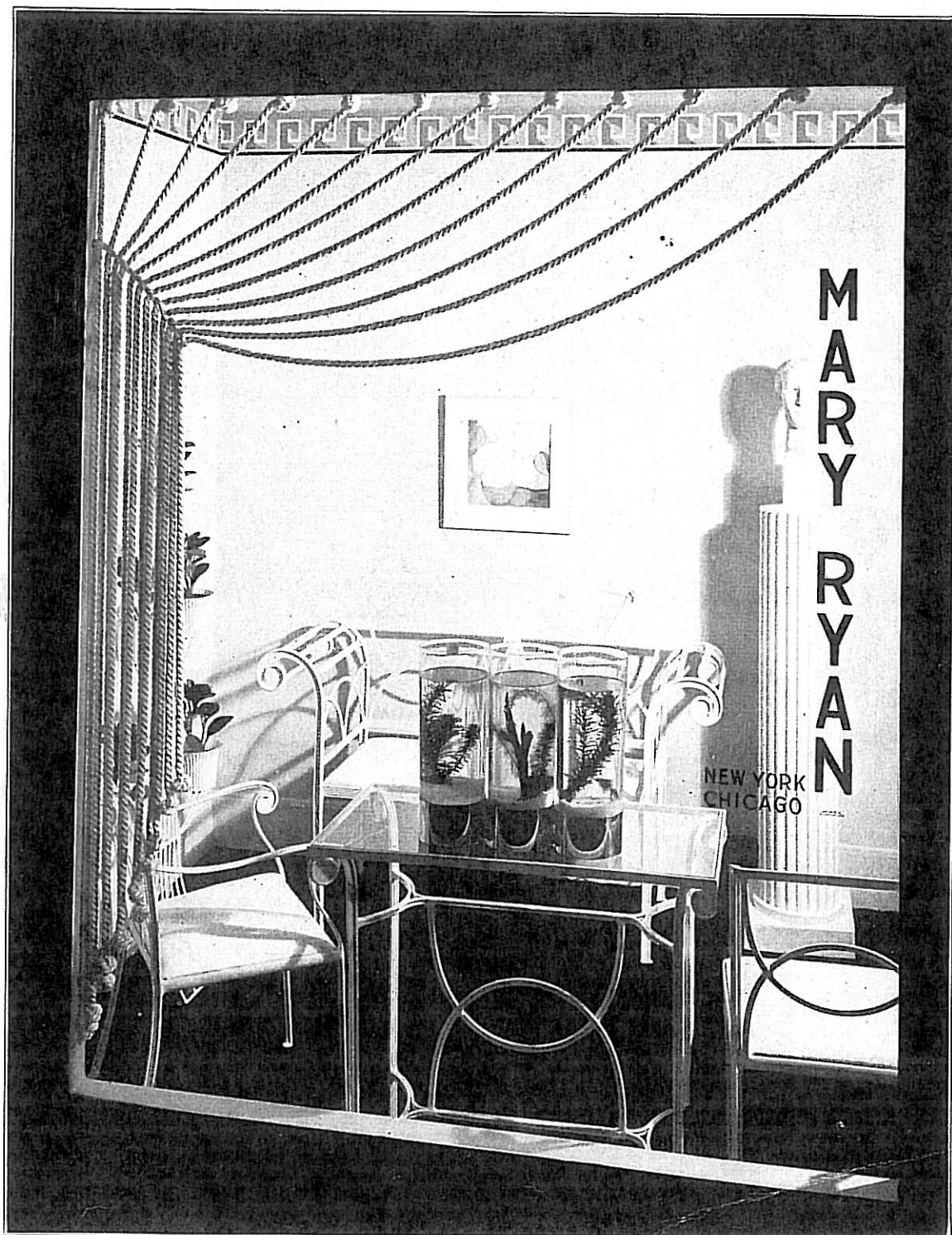


MARY RYAN presents the 1935 line of  
FINE WROUGHT IRON & WIRE FOR  
GARDEN, TERRACE & SOLARIUM BY

LEINFELDER



225 FIFTH AVE., NEW YORK

• • • •

MERCHANDISE MART, CHICAGO

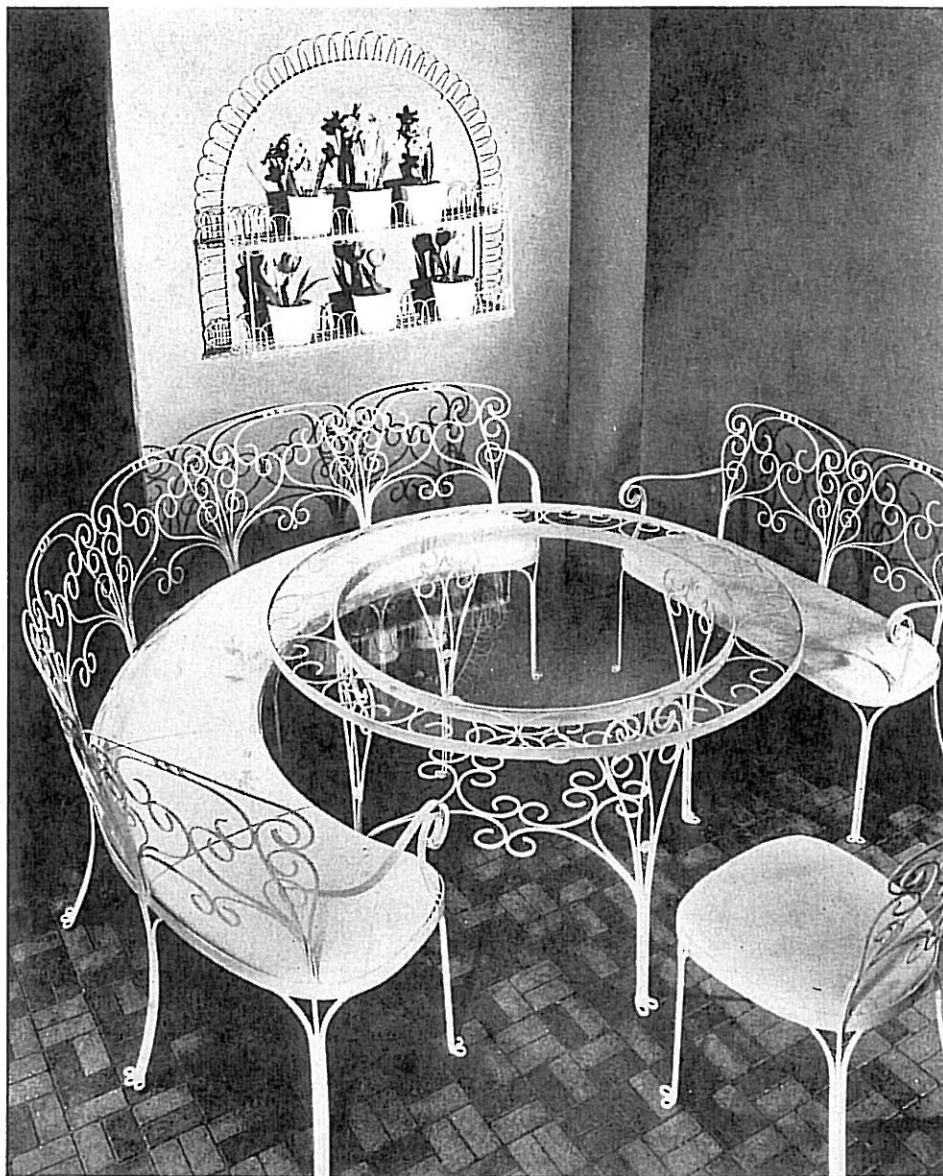
1935-1

## SEVEN SMART NEW TABLE and CHAIR ENSEMBLES FOR 1935

So immensely well-liked were the ensembles we introduced in this line last Spring, that these have all been continued, and seven more ensembles — for every phase of hospitality — have been added. Each set may be had in any of the colors.

Hanging Shelf, F-743  
36 ins. wide, 38 ins. high

Side Chair, CH-48A



Semi-circular Bench, CH-48E.  
116 ins. long.

Round Table, T-206.  
48 ins. diameter.

Settee, CH-48C.  
41 ins. long.

Victorian Wire tracery, under the trees! The ultimate in Summer romance is achieved when this new and charmingly sentimental group is used outdoors. It's lovely, too, for a solarium. Table, T-206 is priced, with glass, \$78; frame only, \$42. Semi-circular bench, CH-48E, \$110. . . . Small settee, CH-48C, \$38. Side chair, CH-48A, \$19.50. . . . Arm chair, CH-48B, \$23. The hanging shelf (an indoor piece, of course) is priced \$15. And the flower pots are \$10 dozen, extra.

### EIGHT COLORS THIS SEASON — A FULL OCTAVE!

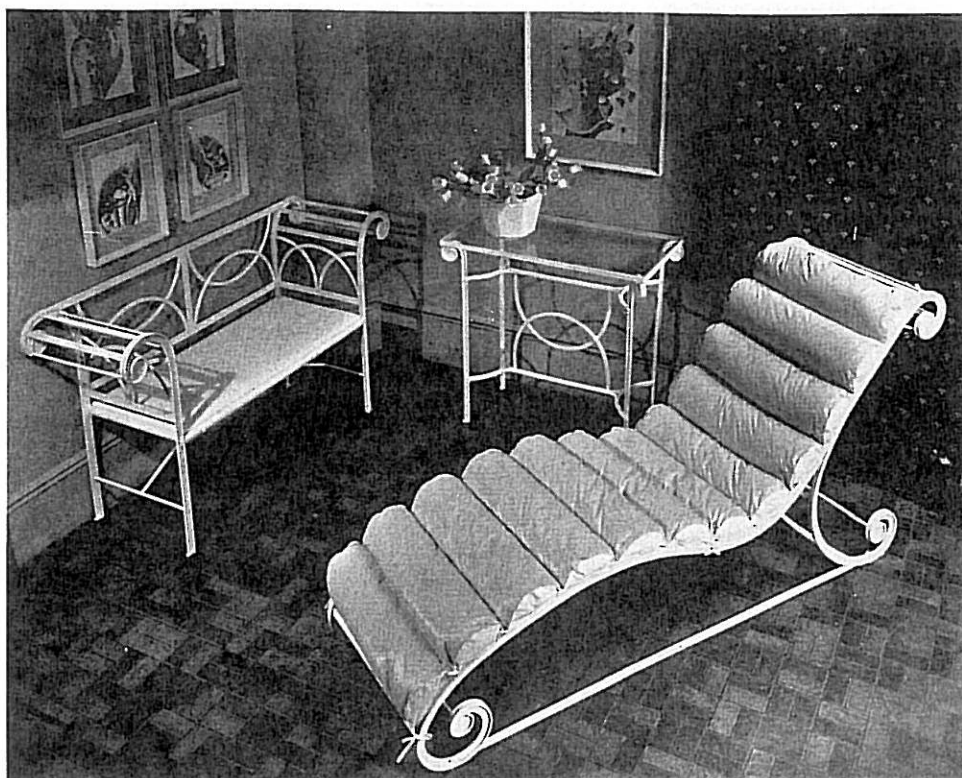
To last year's very popular Pink and Crocus Yellow shades (still enormously smart!) are added three wonderful new high colors: Char-treuse, Turquoise, and Vermilion. Emerald, Brown, and White complete the 1935 "chromatic scale."

Arm Chair, CH-48B



## An Aristocratic Classic - Modern Ensemble

Inspired by a fine, rare Sheraton design, this modern variation on a classic theme is a group for formal settings. Yet the chaise lounge, and even the chairs, are distinctly built for **comfort**! Observe how perfectly the straight settee and console table (photograph at right) are suited to the modern foyer.



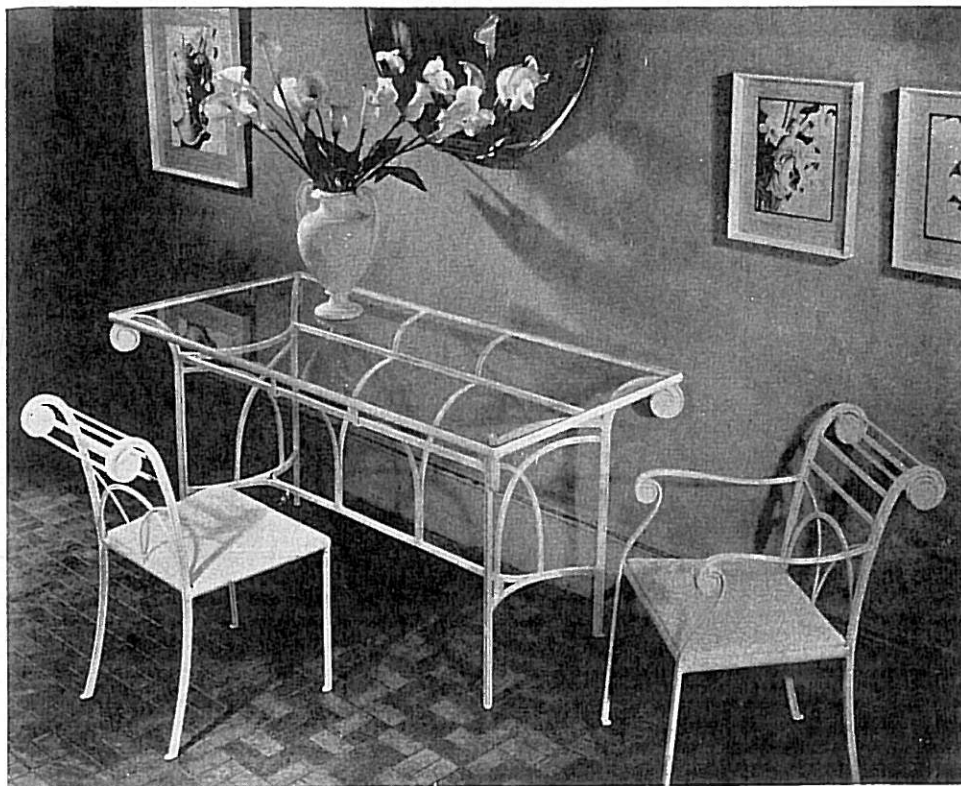
Settee, CH-44E,  
33 ins. \$70.

Table, T-209. 16 x 30 ins.  
With glass, \$35.  
Frame only, \$31.

Chaise Lounge, CH-44F, \$90.  
Cartridge Roll, \$14.  
(F.O.B. Newark)

The simpler but equally elegant chair below was designed as an alternate to the roll-back chair.

CH-44A, \$26.50.



Table, T-208. 28 x 60 ins.  
With glass, \$91. Frame only, \$64.

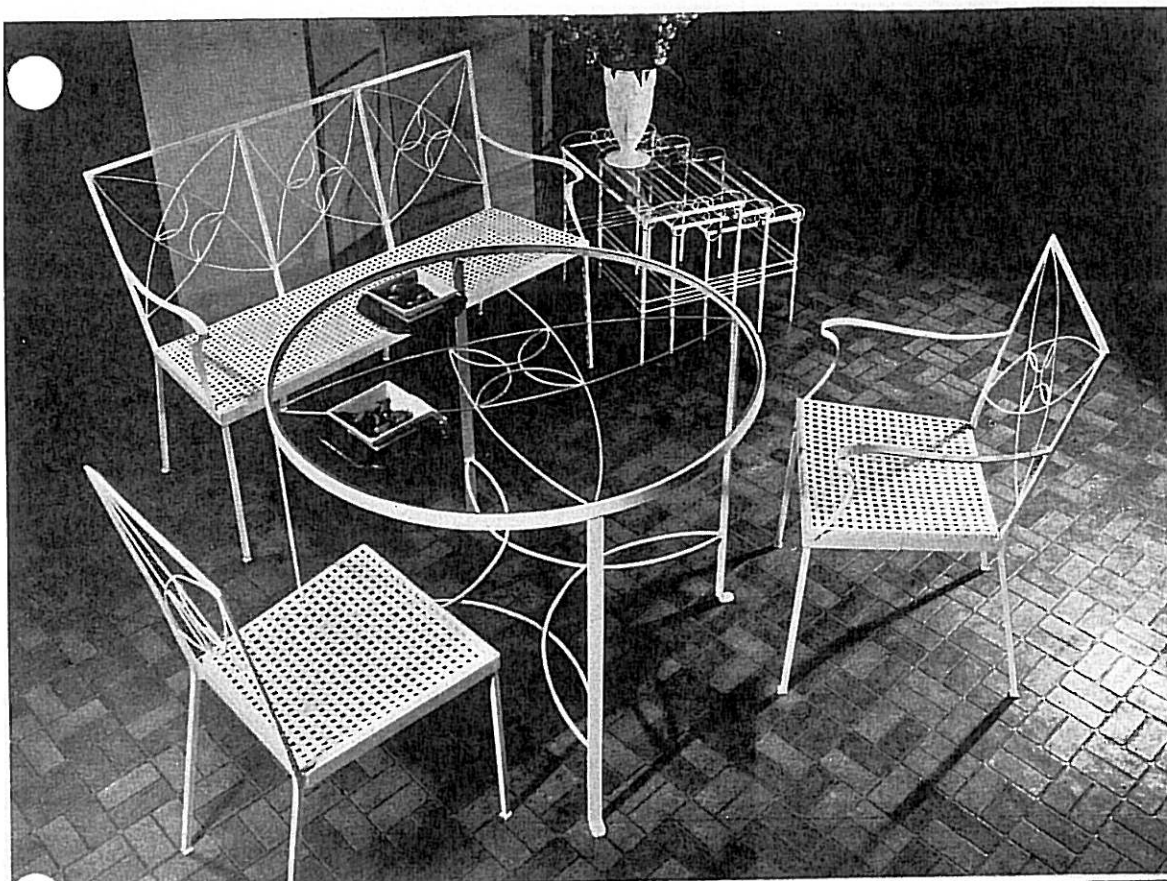
Side Chair,  
CH-44B, \$29.

Arm Chair,  
CH-44C, \$34.

ALL PRICES QUOTED ARE RETAIL

MARY RYAN—1935





Round Table, T-204.  
Settee and Chairs, CH-47.  
Nest of Tables, T-199.

## Two Especially Versatile New Groups – Very Good in Value



Arm Chair, CH-49B.  
\$15 each.  
\$14 in dozen lots.

Table, T-212. 31 ins. high;  
top, 16 x 25 ins. \$13.50 ea.  
\$12 in dozen lots.

35-inch Settee,  
CH-49C.  
\$27 each.

Side Chair,  
CH-49A. \$13.  
\$12 in dozen lots.

To place beside the pool, or in a clump of shade near the tennis court, this very dashing little foursome—the new CH-49 ensemble—is a fortunate selection. It is all of metal, with smooth rolled back in emerald green or other vivid shade, contrasting with the seats,

which are formed of three-inch slats of metal. Designed particularly to be comfortable without the use of pad (one selling feature!)—to stand firmly yet be moved about easily—and to suit the character of either formal or informal settings.

Serve tea on the terrace or indoors—if one prefers. This ensemble is ideal, either way.

Round Table, T-204. 36 ins. dia. Complete with glass, \$27.50. Frame only, \$18.

Settee, CH-47C, with metal seat. \$33.50.

Arm chair, CH-47B, \$15.50 each. In dozen lots, \$14.60.

Side chair, CH-47A, \$12 each or \$11.50 in dozen.

Nest of 3 tables, T-199; largest is 22 x 12 ins. Complete with glass, \$25. Frames only, \$18.

## From Breakfast in the Garden, on Through A Whole Summer Day

... this extremely livable ensemble is a means to solid comfort and to graceful hospitality. It is a classic in white, and smart in yellow, pink, or any of the three new 'high' shades, listed on the back cover of this catalog.

The three pieces shown at right are new this season. They are priced as follows:

Oblong table, T-142—25 x 47 ins. \$28, complete with glass; \$19 for the frame alone. (Flower pot, \$1.00 extra).

Settee, CH-40C; 40 ins., \$26.50. Bench, CH-40F, \$6.50; in lots of 12, \$5.50; in lots of 25, \$5.



ABOVE:  
Table, T-142.  
Flower Pot, F-80  
Settee, CH-40C.  
Bench, CH-40F.



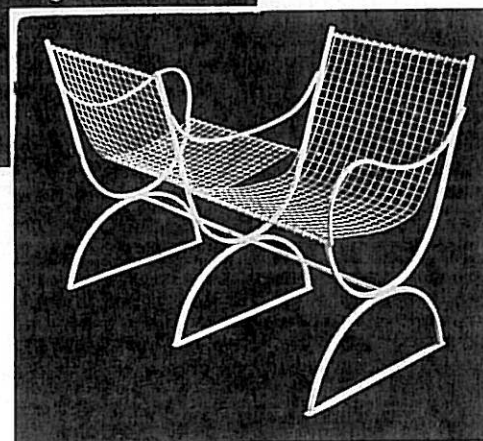
Chairs and Chaise, CH-40 series.

Table, T-184C.

### Pieces Shown Above and at Right

Arm chair, CH-40B, \$11.50 ea., or \$10.70 in lots of 6. Lustersheen pad, \$4.\* Coffee table, T-184C, 30 x 17 ins. 20 ins. high, \$22. Side chair, CH-40A, \$10, \$8 in lots of 6. Lustersheen pad, \$4.\* Chaise lounge, 62 ins. long, 22 ins. wide—CH-40D, \$31. Lustersheen pad, \$14.\* Tete-a-tete love seat, CH-40E, \$23.

\*Lustersheen shades: Blue, Yellow, White, Orange, Green, Black, Red.



BELOW:  
Love Seat, CH-40E.

ALL PRICES QUOTED ARE RETAIL

MARY RYAN—1935



Side Chair CH-46A.

Arm Chair, CH-46B.

Settee, CH-46C.

Table, T-205.

## REGENCY FOR THE FORMAL TERRACE

A sophisticated shield motif is drawn by ribbons of wire (six-ply), to produce this suite which is both very strong and highly decorative.

The table, T-205, is 28x60 ins. Complete with glass, \$72.50; frame only, \$45.50.

The 45-in. settee, CH-46C, \$43.

Side chair, CH-46A, \$21.

Arm chair, CH-46B, \$24.

## FOR BRIDGE OR (Larger) FOR DINING

A distinguished new design that will be adapted (to order) to other versions than that shown at left. Ask for quotations on the double size, for dining, and on the half size, for serving.

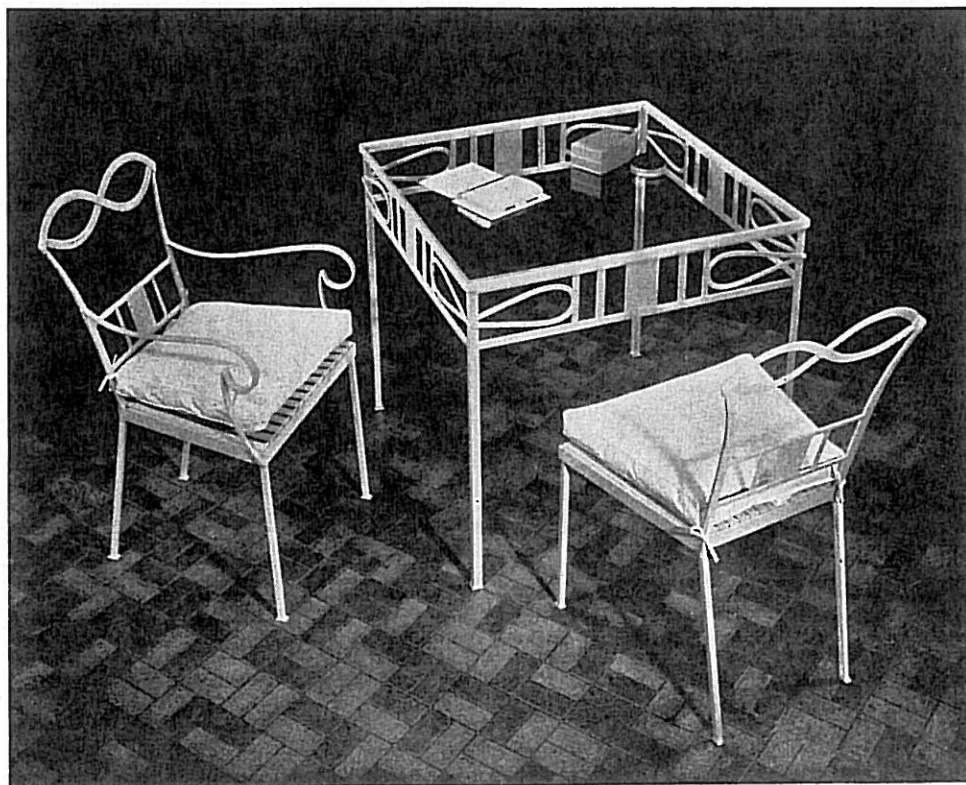
The table pictured is T-207, 28 ins. square, 29½ ins. high, with 5-in. apron. Complete with glass \$39. Frame only, \$27.

The arm chair, CH-45B, is \$21. The side chair, CH-45A, \$17.50. Lustersheen pads, each \$5.00 extra.

CH-45B

T-207

CH-45A





# NEW! Three Designs in Wire Mirrors, Cornices, Tie-Backs

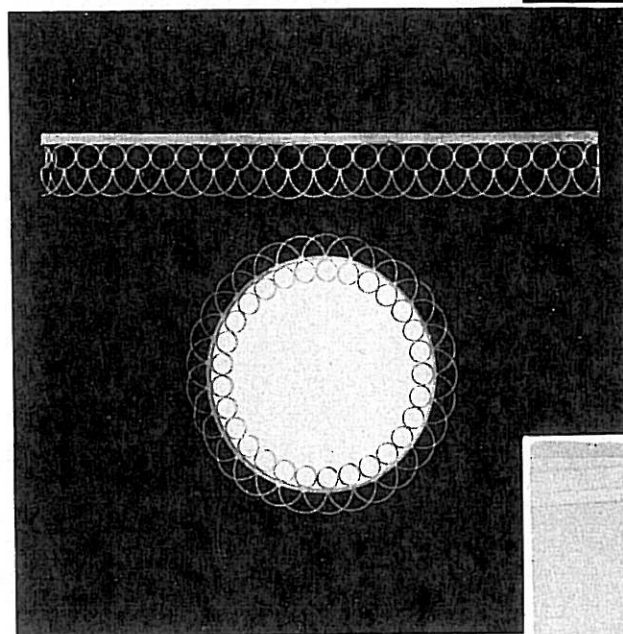
White, or in any of the seven colors: Pink, Vermilion, Chartreuse, Turquoise, Yellow, Emerald, Brown. Thus, any color scheme can be matched, and the choice of patterns offered—as illustrated here—insures a harmony with practically every smart ensemble of today!

Just at right: Circles and interlacing semi-circles. Valance, VA-1, is 5½ ins. wide. \$2 per ft.

Mirror, MIR-1, 24 ins. dia. over all. \$20 complete.

At bottom right: Crossing swirls. Valance, VA-2, is 6¾ ins. wide. \$2 per ft.

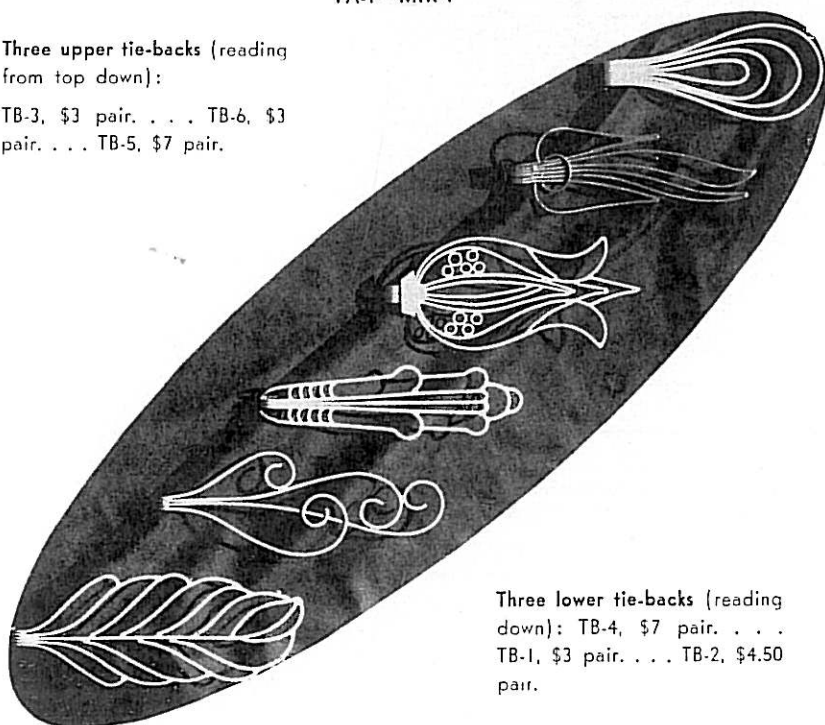
Mirror, MIR-3, 21¾ ins. dia. \$20 complete.



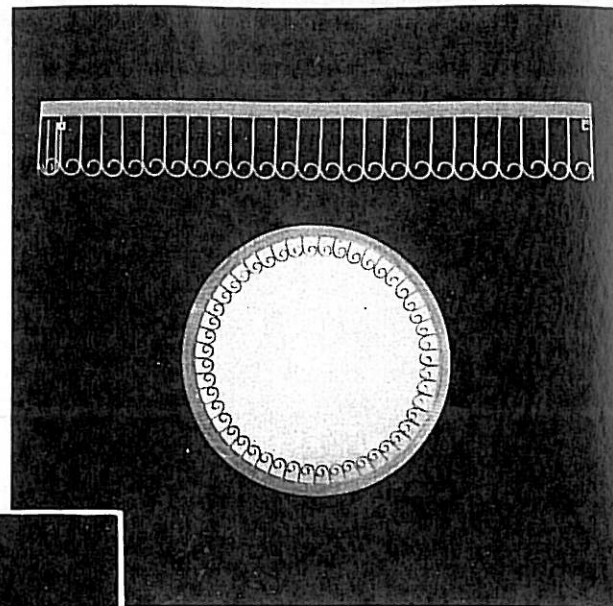
VA-1—MIR-1

Three upper tie-backs (reading from top down):

TB-3, \$3 pair. . . . TB-6, \$3 pair. . . . TB-5, \$7 pair.



Three lower tie-backs (reading down): TB-4, \$7 pair. . . . TB-1, \$3 pair. . . . TB-2, \$4.50 pair.



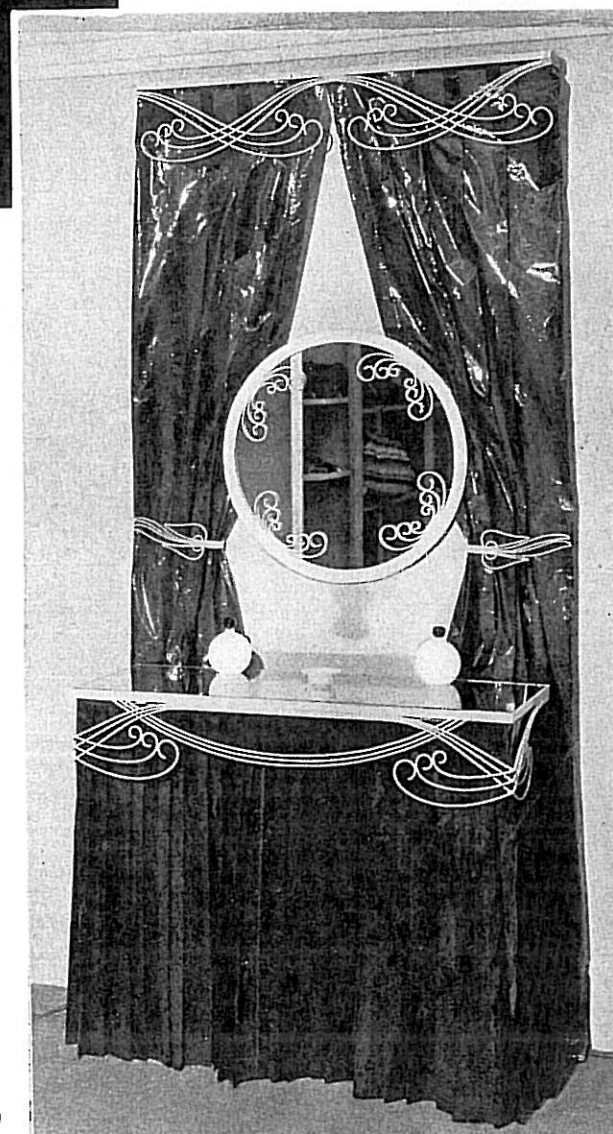
VA-3—MIR-4

Above: 6½ in. valance, VA-3, \$2 ft.

Mirror, MIR-4, 23¾ ins. \$20 complete.

\*Include Return in Measurements.

VA-2—MIR-3



ALL PRICES QUOTED ARE RETAIL  
MARY RYAN—1935

# SUCSESSES!

## Popular Sets, Now Smarter Than Ever

In photograph at right:

T-196 oval table, 30 x 60 ins.  
Complete with glass, \$77; frame  
only, \$39. Two planting pans for  
base, \$5.

CH-43A, side chair, \$18.50.

CH-43B, arm chair, \$21.

In photograph below:

CH-43C settee, 41 ins. long, \$35.

(Any color\* and with waterproof  
material or metal seats)

Plant stands at right:

F-717 single stand with  
gold gallery, 40 1/2 ins. high.  
\$5.50 each, or \$5 in doz.  
lots.

F-650 3-pot stand, 60 ins.  
high, 16 ins. wide. \$8 ea.  
or \$15 a pair. Pots extra.

The popular circular ensemble shown  
below: T-176 round table, 48 ins. diam.  
Complete with glass, \$68; frame only \$32.

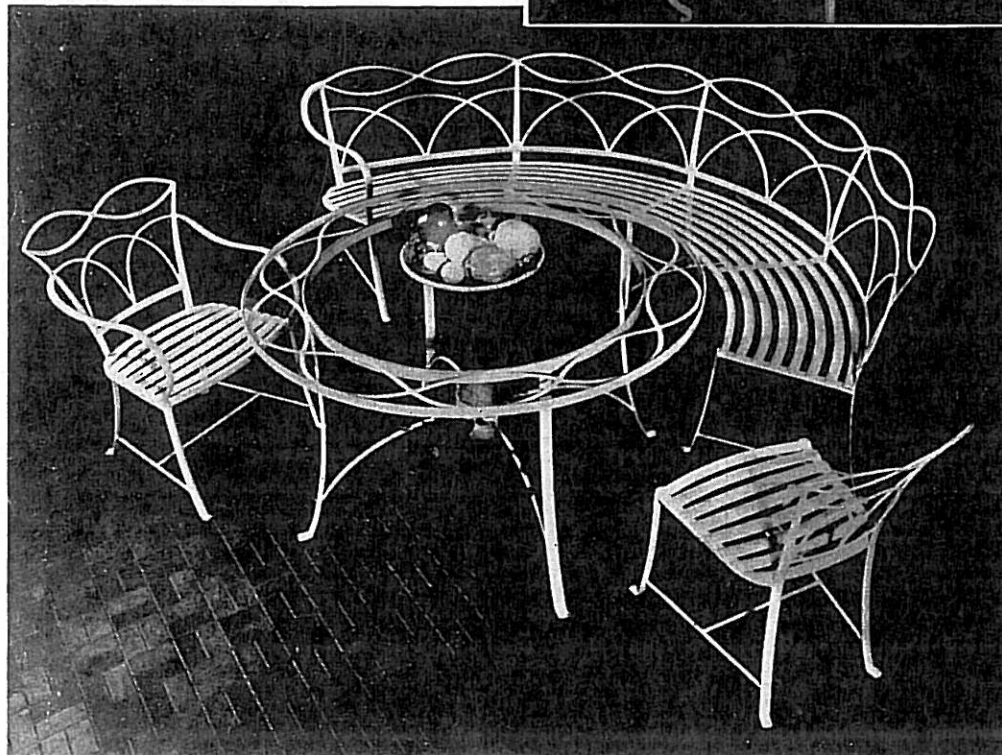
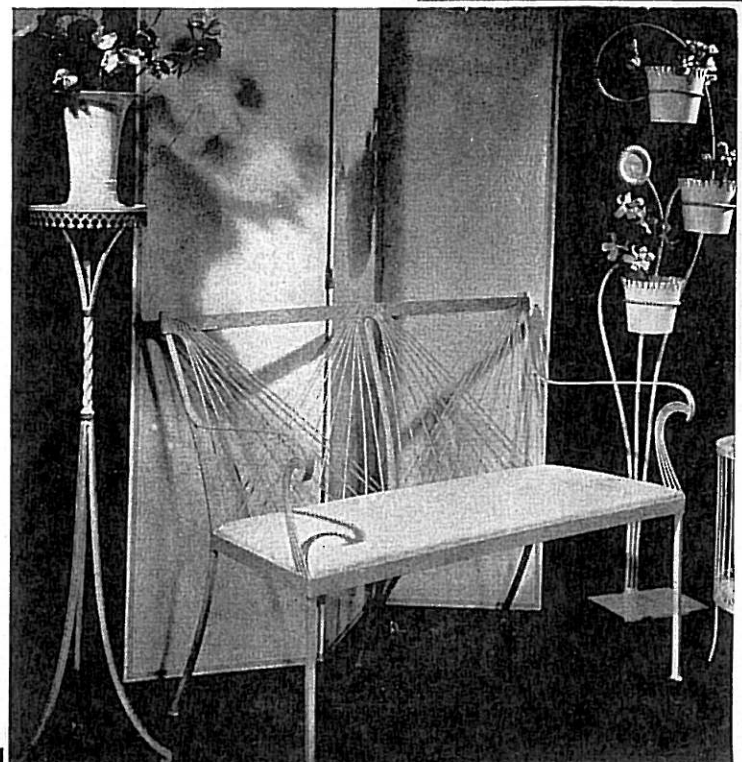
CH-37C bench with two arms, \$77.

CH-37D quarter-circle bench with two  
arms (not shown), \$47.

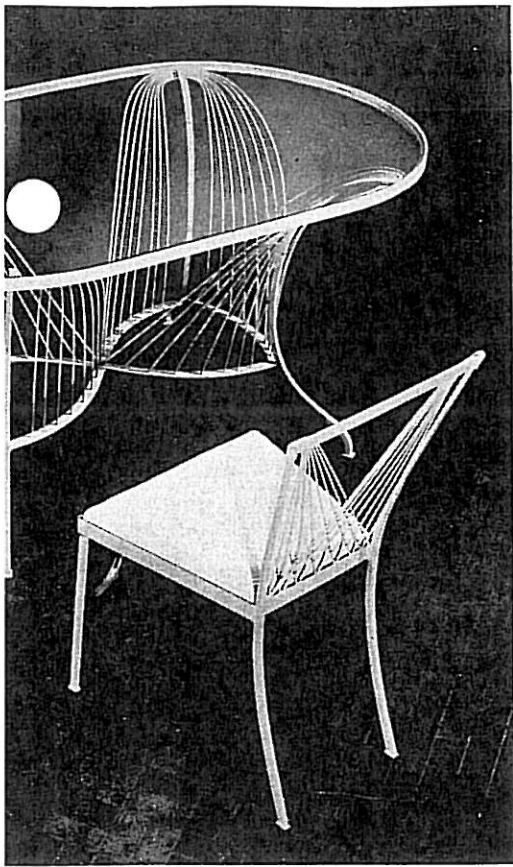
CH-37A side chair, \$16 or \$15.50 in  
dozen lots.

CH-37B arm chair, \$19.50.

CH-37 series with T-176 table.







at left: CH-43 series with T-196 table.

decorative group below: T-193 table,  
ins. high. Complete with glass,  
\$, \$36.

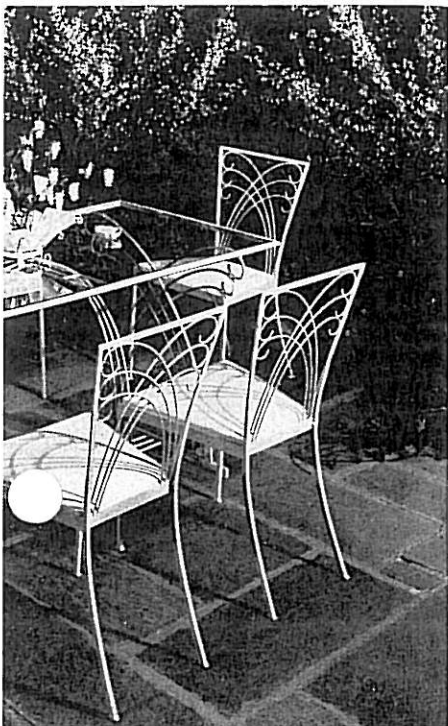
tee, 41 ins. long, \$30.

e chair, \$15.50.

i chair (not illustrated), \$19.

Any color\*, and with waterproof  
material or woven metal seats)

CH-47 series with T-193 table.



CH-41 series with T-192A table.



CH-41D

T-190

The laced wire ensemble — smart with  
lacing in contrasting color:

T-192A round table, 36 ins. dia., 29 ins.  
high. Complete with glass, \$52; frame  
only, \$35.

CH-41C settee, 50 ins. long, \$47.50.

CH-41A side chair, \$22.

CH-41B arm chair (not shown) \$26.

CH-41D tete-a-tete settee, \$52.

Round nest of tables, T-190; 19½ ins.  
high; largest, 16 ins. dia. With glass,  
\$19; frame only, \$12.

**\*NEW 1935 'HIGH' SHADES**  
of turquoise, chartreuse, and ver-  
milion—as well as all the shades in  
which these groups sold so well  
last year. . . Seats of white or  
brown waterproof materials, or of  
woven metal, in self-color.

ALL PRICES QUOTED ARE RETAIL  
**MARY RYAN—1935**



## TABLES FOR SUMMER AND ALL YEAR - INDOORS OR OUT

T-115 28-in. square table with cut corners, complete with glass, \$31; frame only, \$20.

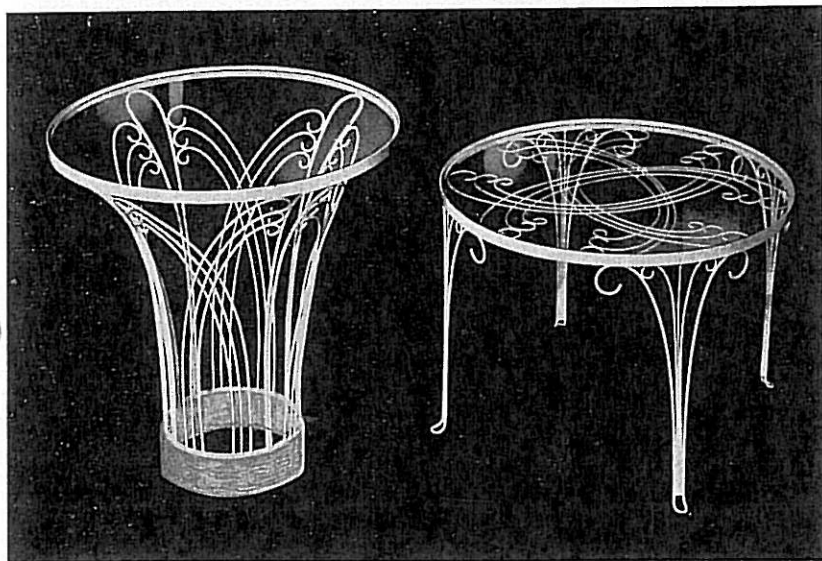
T-211A round table, with permanent or removable tray top (specify which). 18 ins. dia. Complete with glass, \$7.50. In doz. lots, \$7. In lots of 25, \$6.80. Frame only is priced \$5.20 ea., \$4.70 in doz. lots, \$4.50 in lots of 25.

T-194 tea table (lower left), 30 ins. high, 28 ins. dia. Complete with glass, \$33.50; frame only, \$27.50.

T-195 low lounge table, 30 ins. dia., 21½ ins. high. Complete with glass, \$27; frame only, \$20.

T-115

T-211A

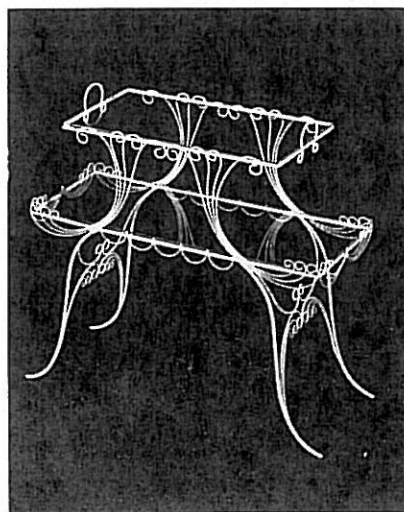


T-194

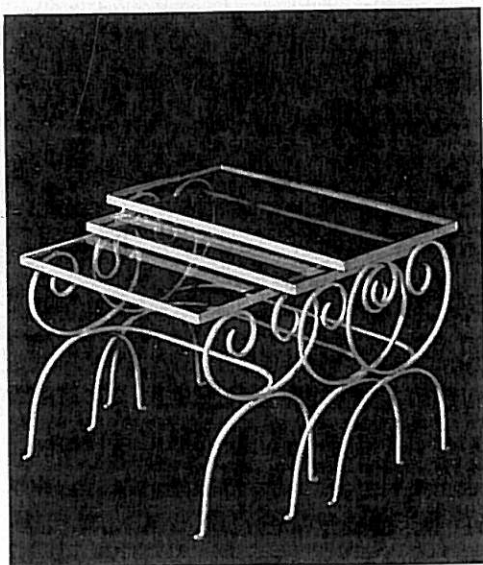
T-195

T-189 two tier table (below), has shelves 12 x 27 ins. and 12 x 20 ins. 16 ins. high. Complete with glass, \$29.30; frame only, \$24.

T-189



T-181



T-170

T-181 Victorian table (left corner) 37 ins. high, top 19 ins. dia., \$17.

T-170 nest of tables (left). Largest is 24 x 14 ins., 19½ ins. high. Complete with glass, \$24.50; frames only, \$18.



T-202 round table, 30 ins. dia. Complete with glass, \$18.50; frame only, \$12.

T-203 round table, 14 ins. dia. With glass, \$6.50; frame only, \$4.80.

T-201 round table, 14 ins. dia. With glass, \$6.50; frame only, \$4.80.

T-186 oval 3-tier table, 27 ins. high. Priced, \$9.50.

T-185 round table, 12 ins. dia., 20 ins. high, \$12.

T-175 lyre-base table, round top, 22 ins. dia., 25 ins. high. With glass, \$20; frame only, \$16.

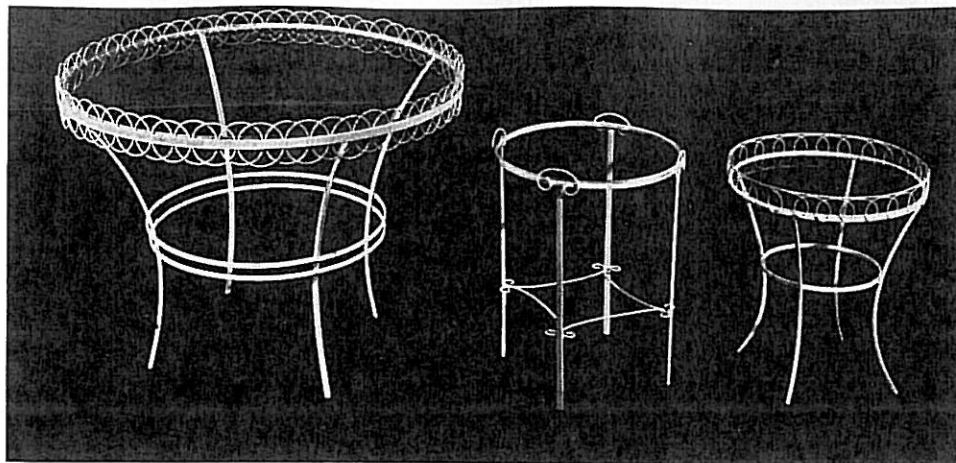
T-183 2-tier stand, 38½ ins. high. Shelves 19 and 12 ins. dia, \$12.

T-145 handled table, removable tray, 14 ins. dia. \$6. each; \$5.50 in dozen lots, \$5.30 lots of 25.

T-177 round table, 19 ins. dia., 19 ins. high \$7.50 ea.; \$7. in doz. lots.

T-163 handled, fluted table, 28½ ins. high \$4. ea.; \$3.50 in pairs, \$3. doz. lots.

T-126 muffin stand, with 3 removable trays, 26 ins. high. \$5.50 each; \$5. in pairs. \$4.70 dozen lots. \$4.50 lots of 25.



T-202

T-203

T-201

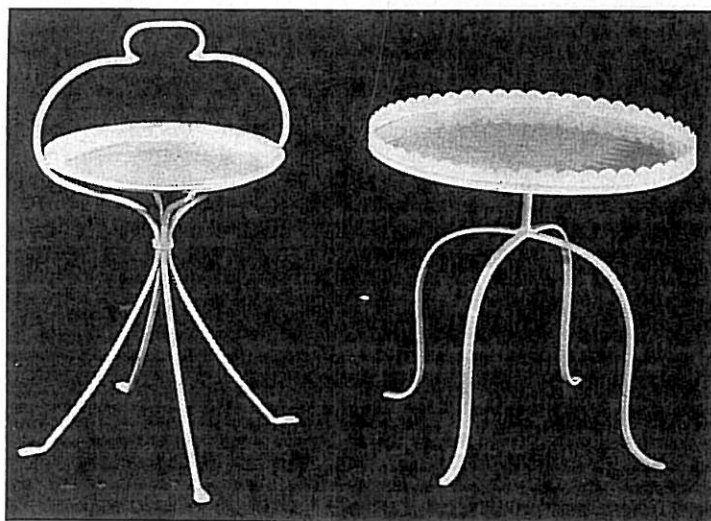


T-186

T-185

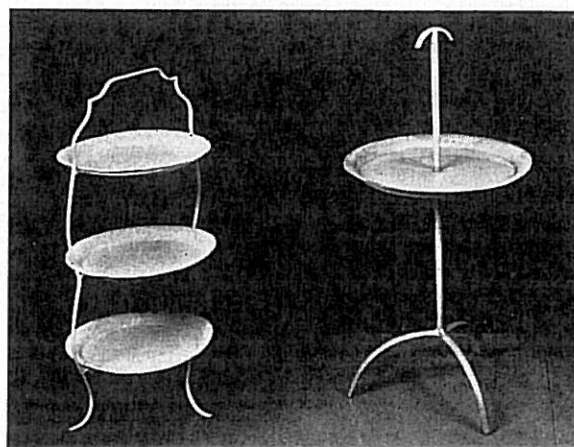
T-175

T-183



T-145

T-177



T-126

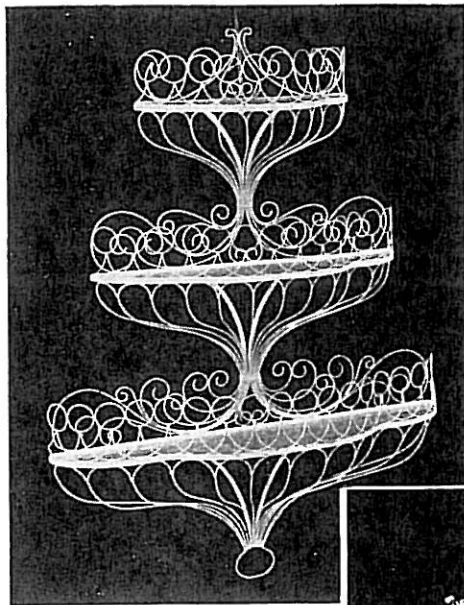
T-163

ALL PRICES QUOTED ARE RETAIL

MARY RYAN—1935



## ALL SORTS OF LACY WIRE PLANT STANDS

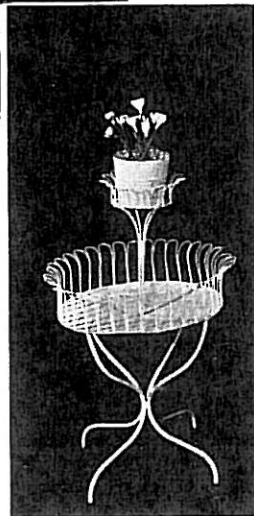


F-735  
Wall  
Rack

F-735 large wall rack  
(above) 55 ins. high, 42  
inches wide. Priced \$45.

F-660 flower stand (right)  
31 inches high, \$11. ea.  
\$10. ea. in pairs.

F-701B wall stand (just be-  
low) 49 ins. high, \$29.50.



F-660

F-733A plant stand (just below, at right) typifies the fashion for Victorian ideas interpreted modernly. This is 41 ins. high, priced \$37. . . . F-733B (not shown) is the same but semi-circular to fit against a wall, \$30. Pots extra.

F-726B flower stand (lower  
right corner) 25x8 ins., 35  
ins. high \$19.50 ea., \$18.  
in pairs. Pots extra.

F-705B plant stand (just  
below) 32 ins. high, \$5.  
each. \$55 the dozen. Pots  
extra.

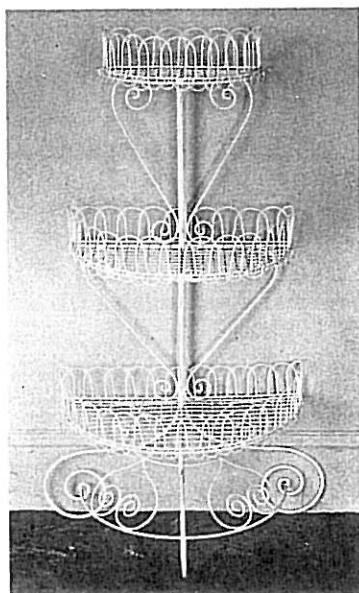
F-254, oval wire flower  
holder with filler (bottom  
center) 9x12 ins., 6 ins.  
high, \$4.50 ea., \$48. doz.

F-255 (not shown), same  
style but round shape, 11  
ins. dia., 7 ins. high, \$3.50;  
\$36. doz.



F-733A

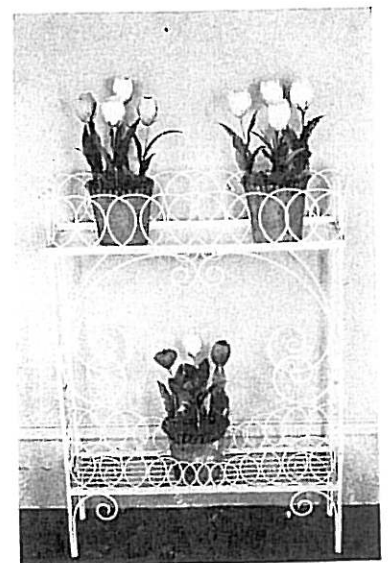
F-701B



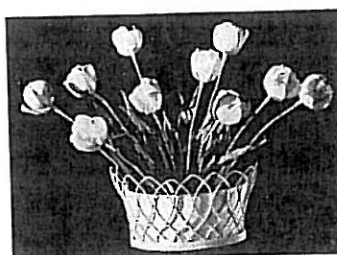
F-705B



F-726B



F-254



# HIGHLY DECORATIVE WIRE ACCESSORIES

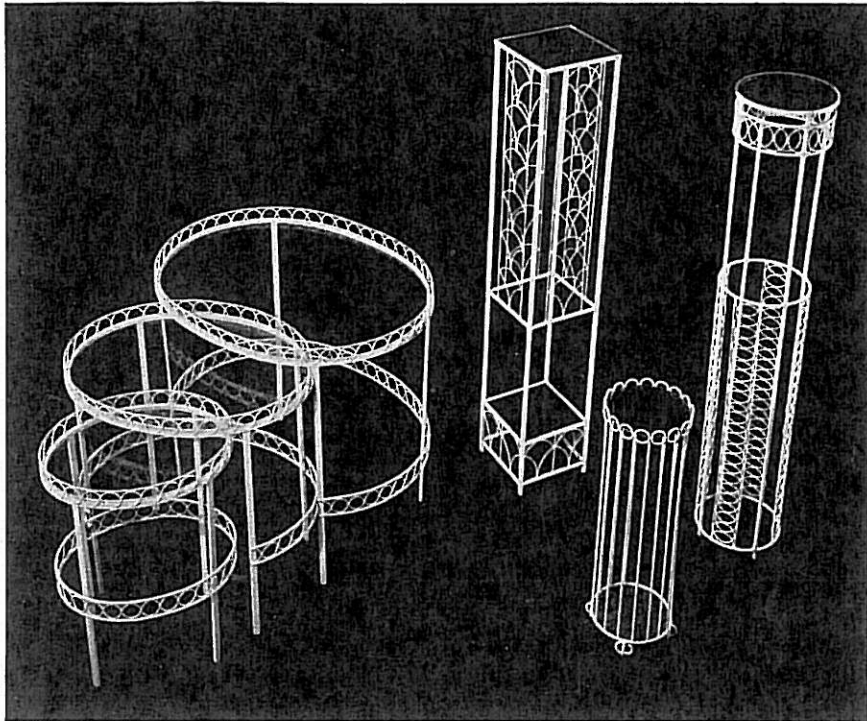
WB-6

Three new Plant Stands shown below:

F-739 40 ins. high, 7 ins. sq. Complete with blue glass top and base, \$16.

S-64 20 ins. high, 6 ins. dia. Complete with blue glass top and base, \$8.50.

F-740 40 ins. high, 7 ins. sq. Complete with blue glass at top only, \$16.



T-200

F-739

S-64

F-740

Nest of 3 Oval Tables, shown above:

T-200, 24½x19x22½ ins. (largest table). With glass, \$28.50. Frames only, \$22.

12-inch Square Table, shown below:

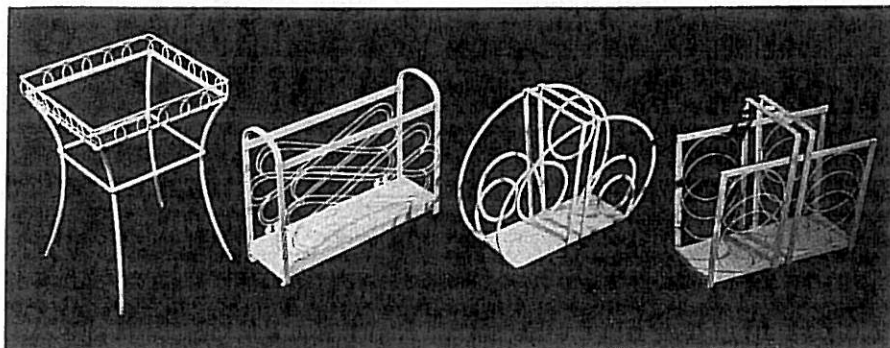
T-197, with glass, \$7. ea.; frame, \$5.90.

T-197

M-45

M-47

M-46



Hanging Shelf shown above:

WB-6, 17½x30 ins. high. Complete with 4 glass shelves, \$26. Frame only, \$18. (Porcelain figures from Mary Ryan.)

The 5 Magazine Racks shown across bottom of page:

M-45 Oblong, 11¾ ins. high, \$13. ea.

M-47 Semi-circular, 13 ins. \$7.50.

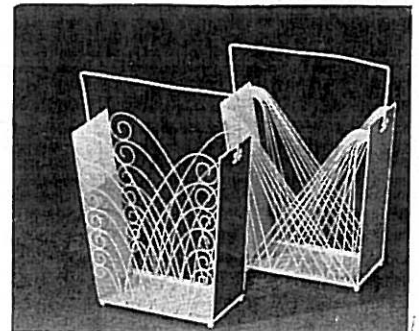
M-46 Oblong, 11¼ ins. high, \$9.50.

M-43 'Feather' decoration, 20 ins. high, \$7.50 ea.; \$7. doz. lots.

M-44 'Laced' decoration, 20 ins. high, \$7.50 ea.; \$7. doz. lots.

M-43

M-44

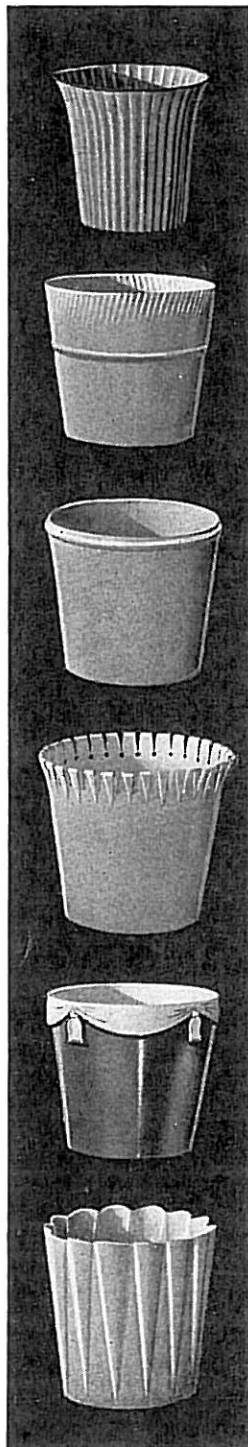


ALL PRICES QUOTED ARE RETAIL

MARY RYAN—1935

# NEW PLANT STANDS - AND FLOWER POTS

A triumph in proportioning, and stunningly effective for its purpose —the new plant stand, F-741 (shown at right), is one of the outstanding designs for 1935. It's 48 ins. high, and priced \$13, or \$12 each if bought in pairs. The flower pots are included in this price.



**F-251**  
5 in. dia.  
5 in. high  
\$2 each  
\$18 dozen

**F-77**  
5½ in. dia.  
80c each  
\$8 dozen

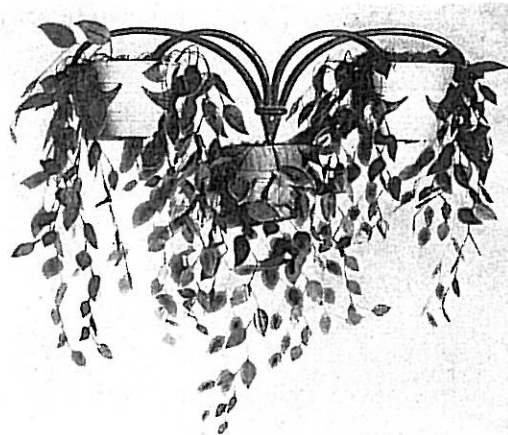
**F-80**  
5 in. dia.  
5½ in. high  
\$1 each  
\$10 dozen

**F-41**  
6 in. dia.  
5½ in. high  
\$18 dozen

**F-259**  
6½ in. dia.  
\$3.50 each  
\$36 dozen

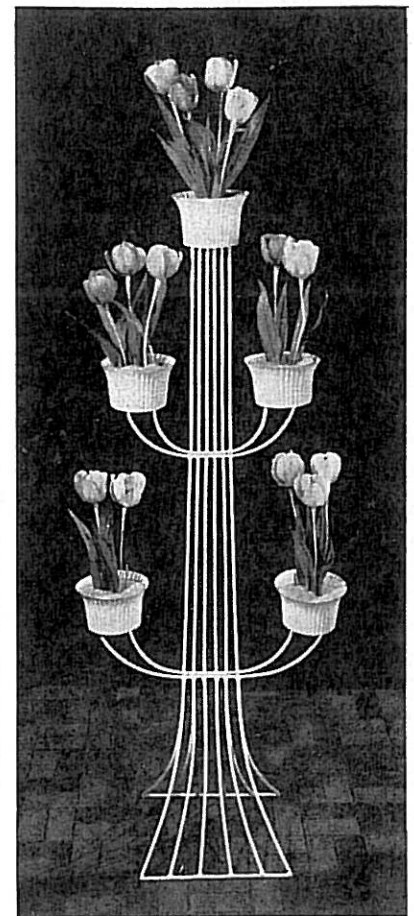
**F-260**  
Same, but  
5½ in. dia.  
\$3 each  
\$30 dozen

**F-91**  
5½ in. dia.  
5½ in. high

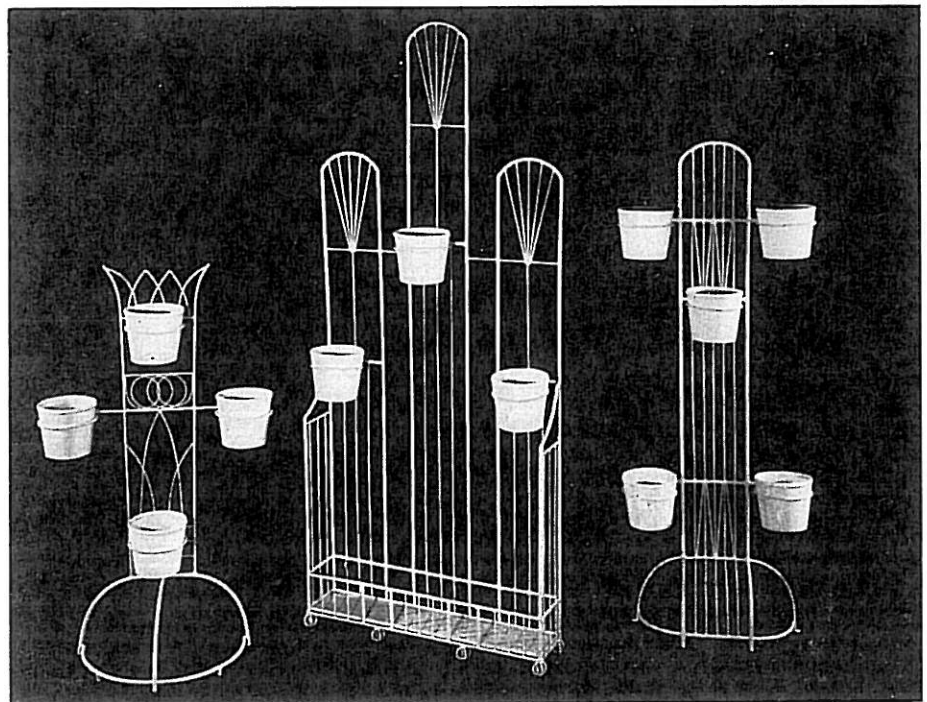


**F-673**

F673 plant bracket, 30 ins. wide;  
Priced \$6. each. Pots extra.



**F-741**



**F-742** plant stand 38 ins.  
high, \$8 ea.; in pairs,  
\$7.50.

**F-752** plant stand 60 ins.  
high, \$23 each.

**F-744** plant stand 60 ins.  
high, \$10 ea.; in pairs, \$9.

F-80 Flower pots (sold separately for the above) \$10 doz.

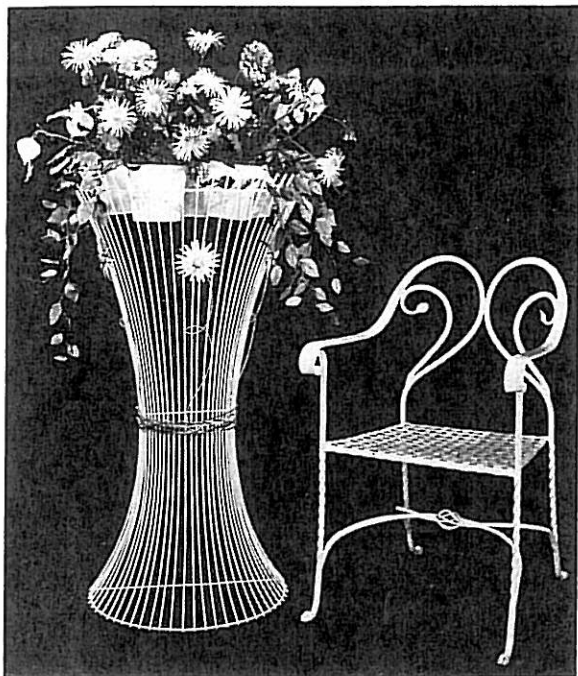


**TWO PIECES SHOWN BELOW:**

F-728 plant stand in form of wheat sheaf, 40 ins. high, \$19.50.

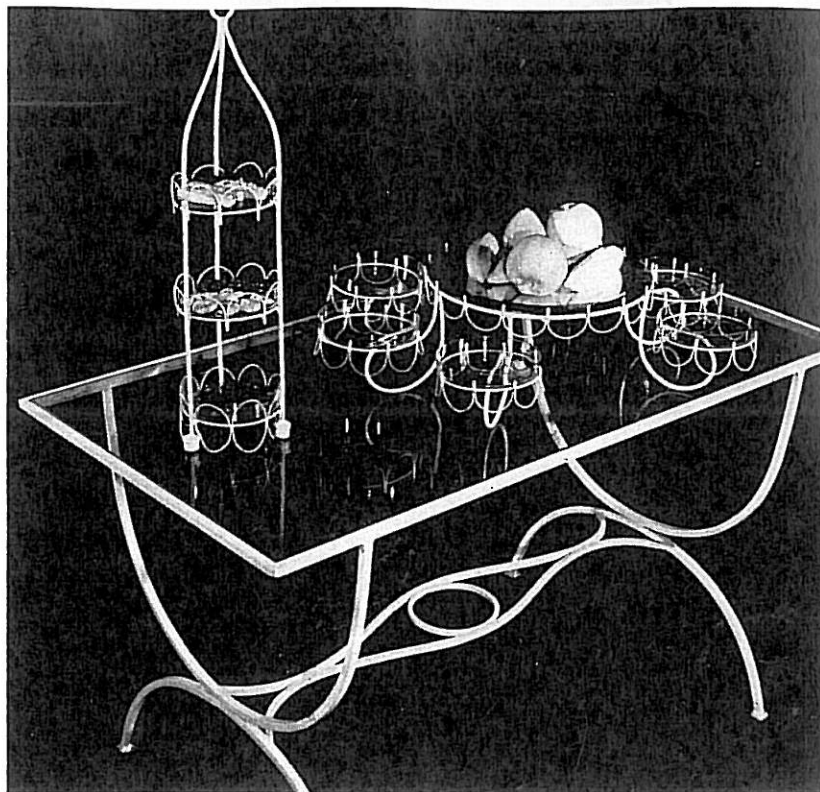
F-729 (not shown) is the same in full round, 23 ins. dia., \$31. Pots extra.

CH-20 chair is priced \$22.



F-728

CH-20



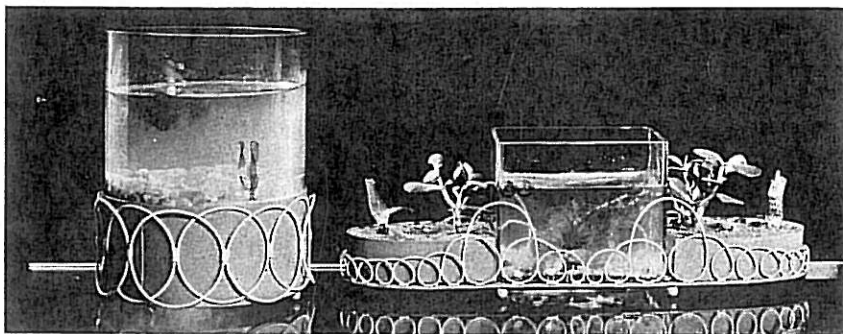
T-191B Table

F-736 and F-737

**HORS D'OEUVRE SERVICES:**

F-736 table centerpiece with plate glass placque for fruit and 6 glass dishes. In wire frames 28 inches across, \$17.50 complete. With 4 candle holders F-736B—\$18.50 complete (not shown).

F-737 three-tiered server, 25 ins. high with 3 glass dishes, \$8.50 complete.



GA-30

GA-34

**TABLE AQUARIA:**

GA-30 cylindrical aquarium, 8 1/4 inches dia., 11 ins. high, \$11.50 complete.

GA-34 combination aquarium and planting dishes, 19 inches long, 5 ins. wide, 6 1/2 ins. high, \$13. complete. \$9. frame only.

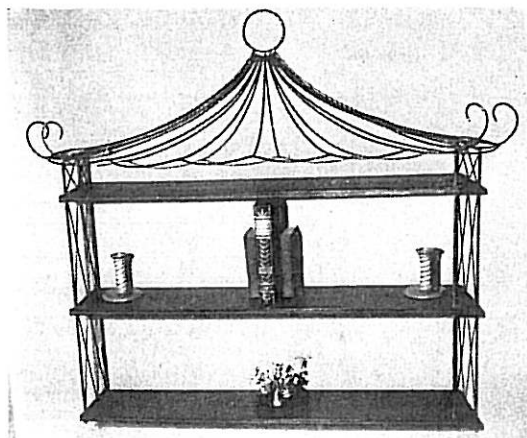
WB-2



**PERIOD  
BOOK SHELVES**

WB-2 Directoire shelves 26 ins. wide. Priced \$12.

WB-4 Pagoda shelves, 33 ins. wide. Priced \$18.



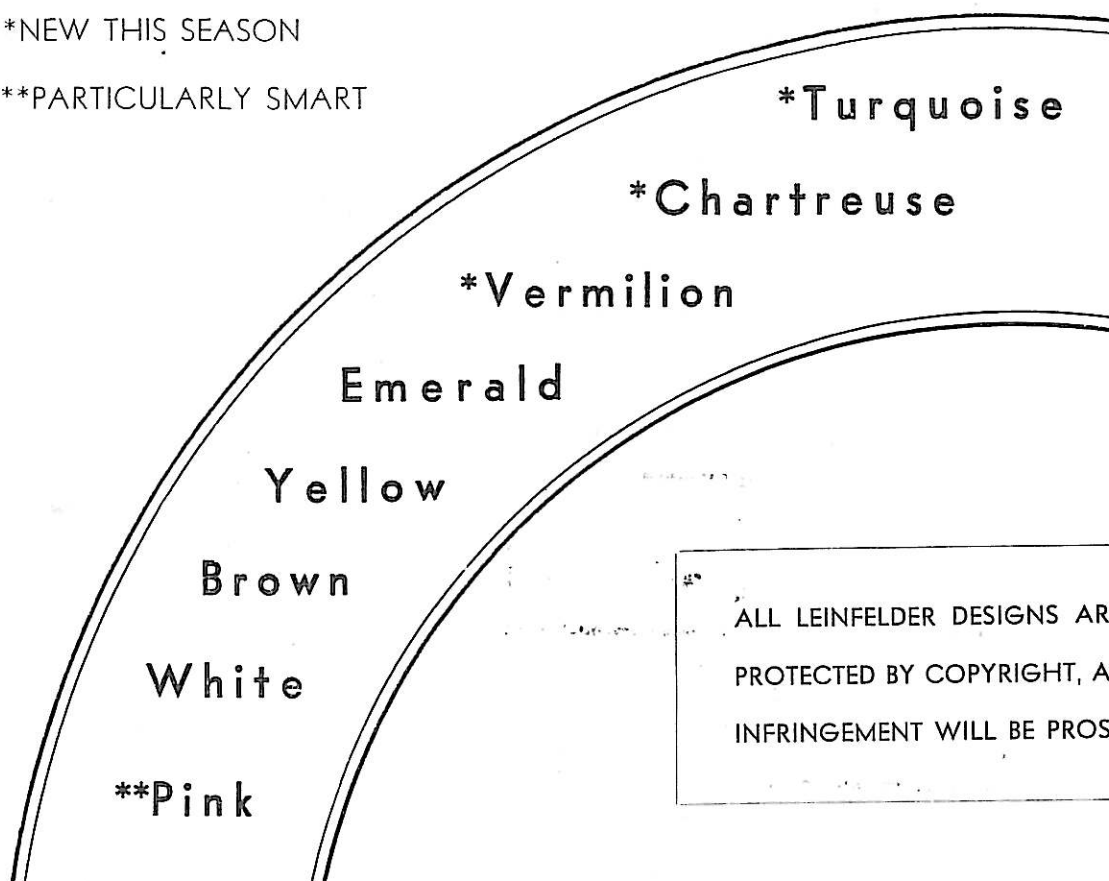
WB-4

ALL PRICES QUOTED ARE RETAIL

MARY RYAN—1935

\*NEW THIS SEASON

\*\*PARTICULARLY SMART



## "BEST COLORS — BEST DESIGNS"

**L**EIFELDER LEADERSHIP in the metal furniture class is, this season, more pronounced than ever. This is not only my own sincere opinion, but the judgment of impartial critics who have seen this glorious collection in my New York or Chicago showrooms.

Already chosen for featuring in important New York collections, and in the leading magazines, this merchandise will gain much valuable publicity, making it still easier for you to sell with profit.

**You may order any piece in any color.** Personally, I would suggest showing plenty in white, and having pink well represented—as well as turquoise, chartreuse and vermilion (the new 'high' shades this season). Brown, we find, is smartest in combination with another color, or with white. And, of course, emerald and our special crocus yellow — somewhat more staple shades — are important too.

On various pieces, we quote special prices for a quantity of 12 or 25. These are items that sell well in volume, and we urge you to take advantage of the quantity price to allow promotional featuring. On other pieces, we quote special prices for a pair. These are items we have found to sell especially well when shown in pairs.

**Please note** that all tables are quoted both complete with glass and for frames only. We recommend you purchase glass from local glaziers wherever possible, to save on freight and packing.

Leinfelder merchandise is all priced F.O.B. LaCrosse, Wisconsin. Let me remind you that retail prices are quoted throughout this catalog —always less your customary trade discount.

*"Always at your service,"*

*Mary Ryan*

225 FIFTH AVE., NEW YORK • • • • • MERCHANDISE MART, CHICAGO