



This photograph of the CH-42 series with T-193 table is used here by courtesy of "Good Housekeeping." This group will appear in the May issue of that magazine. Description and prices are on page one of this catalog.

MARY RYAN
225 FIFTH AVE.
New York City

Season
1934

LEINFELDER

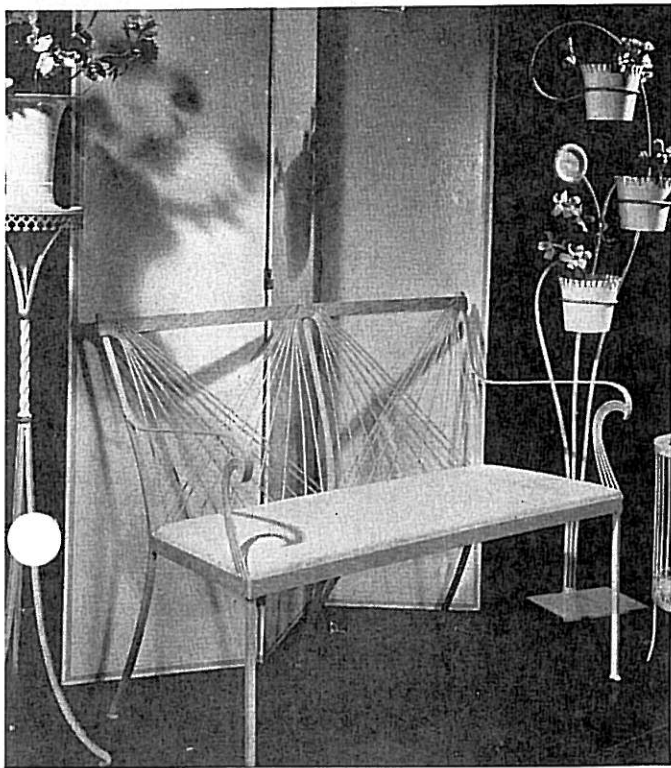
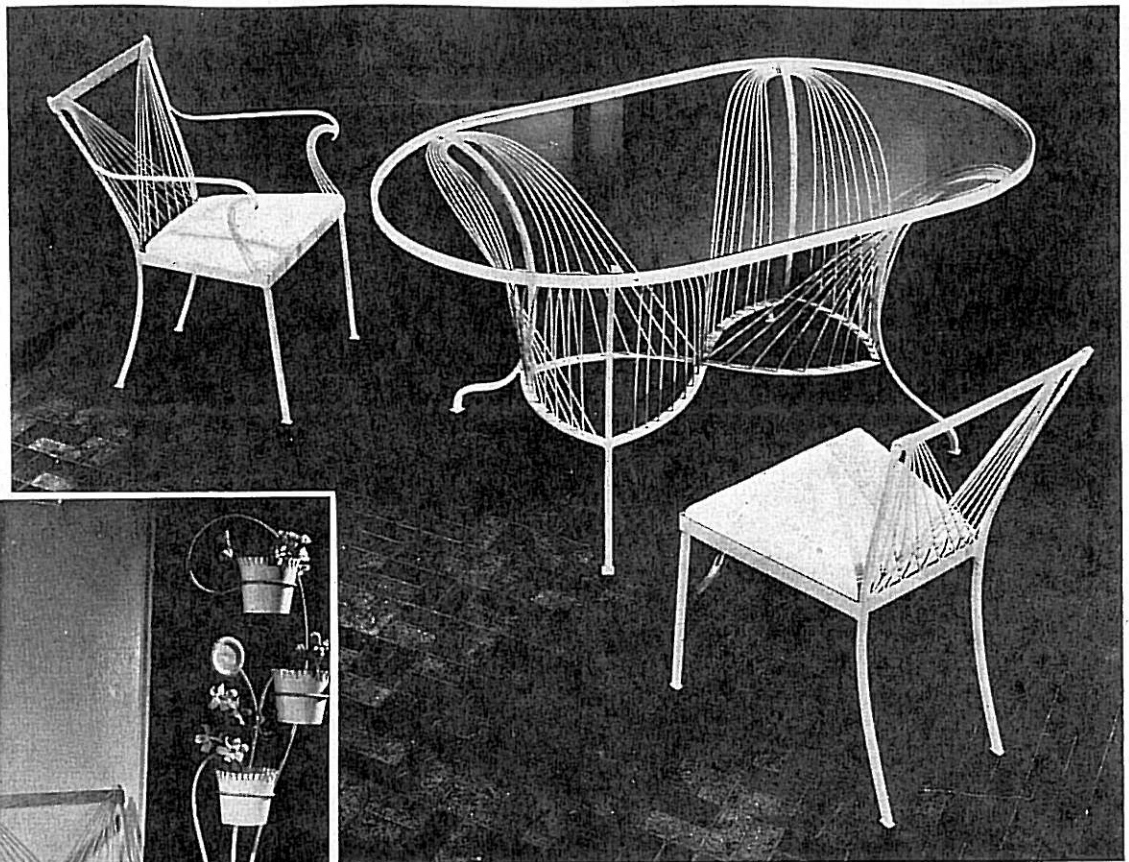
fine wrought iron & wire

FURNITURE

for

Garden . . . Terrace . . . Solarium

"House & Garden" magazine features this (in pink) on page 77, of April issue.



THREE FOREMOST MAGAZINES THESE THREE NEW ENSEMBLES

CH-43 settee (above) is 41 inches long and is shown with white pigskin grain waterproof upholstery. Also comes in brown pigskin grain—or with seat made of metal strips, basket-woven, and painted like the frame. Either way, \$38.00.

F-650 plant stand (right, above) is 60 ins. high, 16" wide, priced \$8.00 each. \$7.50 each in pairs.

F-717 plant stand with gold gallery (left, above), is 40½ ins. high, priced \$5.50 each. \$5.00 each in lots of 6.

FLOWER POTS PRICED EXTRA.

WE RECOMMEND YOU BUY THIS ENSEMBLE IN PINK, with either white or brown pigskin grain water-proof material used on the seats. Also available in our new yellow, in emerald, or in brown—with seats in white pigskin grain, or of woven metal strips. Prices of pieces shown above:

T-196 60-inch table (frame only), \$44.00.

CH-43A side chair, \$19.50.

CH-43B arm chair, \$23. (Another view of this is shown in photo below).

CH-41B side chair, \$26.00.

CH-43B arm chair (center), \$23.00.

CH-43A Side chair (right), \$19.50.



The chairs of these new ensembles reveal, in "close-up," the superiority of detail in the designs.

"House Beautiful combined with Home & Field" showed this ensemble (photographs at right) on page 60 of the March issue.

IN WHITE WITH CONTRASTING "LACINGS" for example, yellow lacings, with white pigskin grain waterproof material on seats, or with seats of woven metal strips.

CH-41C settee, 50 ins. long, is priced \$47.50.

CH-41A side chair, \$22.00. (Arm chair shown on opposite page.)

T-192A round table, 36 ins. diameter, 29" high, \$35.00. T-192B (frame only) 48" round table \$40.00. Also a large oval table (T-192C, not shown), (frame only). 36"x72"—29" high \$80.00.

In lower photograph (right): CH-41D tete-a-tete chair, \$52.00.

T-190 nest of 3 tables, \$12.00, for frame only (without glass). 19 1/2 ins. high—16 ins. diameter of largest table.

ARE HELPING TO INTRODUCE TO YOUR BEST CUSTOMERS

GROUP ILLUSTRATED ON FRONT COVER: Featured in April "House & Garden" on page 76, and to be in May "Good Housekeeping." Especially lovely in our new Crocus yellow.

T-193 60"x28" table, 28" high, \$36.00 (frame only).

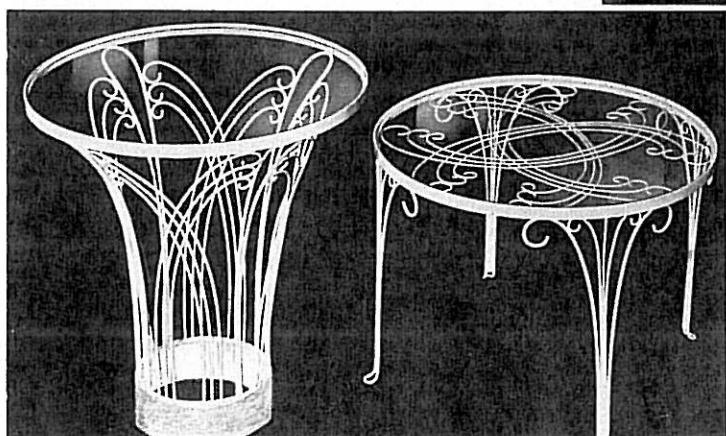
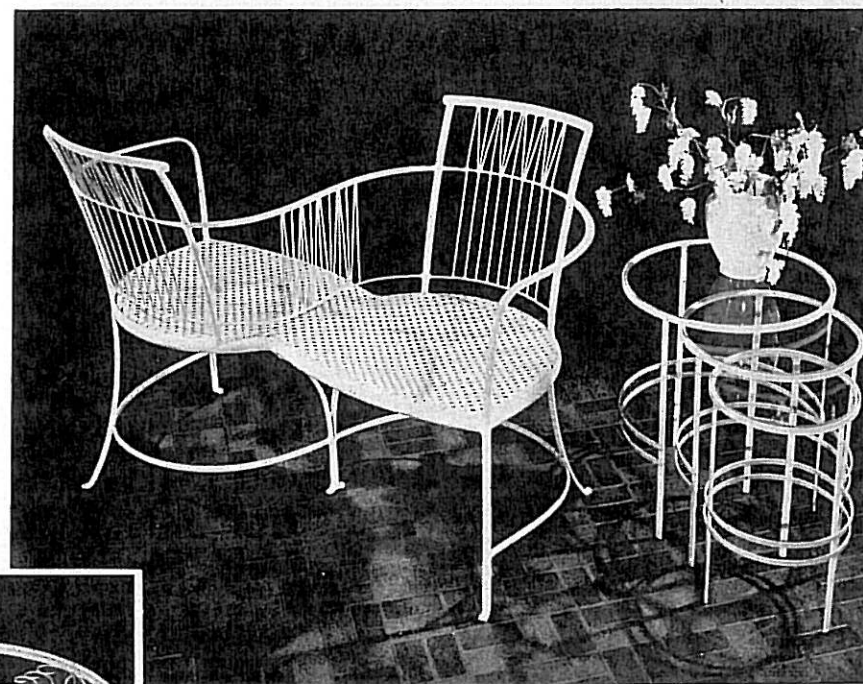
CH-42C settee, 41" long, with white pigskin grain seats, or seats of metal strips. \$30.

CH-42A side chair (either seat), \$15.50.

CH-42B arm chair (not shown), \$19.

Two tables below: T-194 tea table 30" high, 28" dia. \$27.50 for frame alone.

T-195 "Lounge" table, 21 1/2" high, 30 1/2" dia. \$20.00 for frame alone.



This picture shows detail of metal seats available in all of these three ensembles.

ALL PRICES QUOTED ARE RETAIL

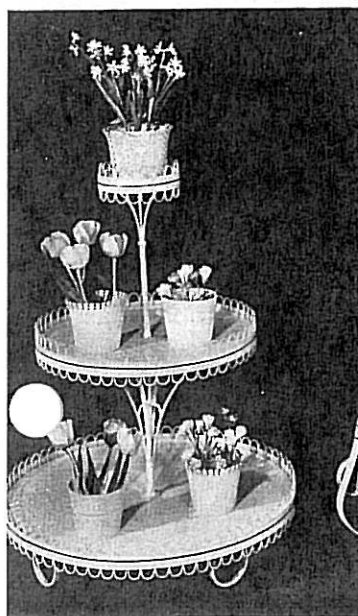
MARY RYAN — 1934

MINGLE MODERN WITH VIC- TORIAN



CH-40 Ensemble

T-184C Table



733A



W-10

F-733A plant stand, typifies the trend toward Victorian ideas interpreted modernly. This is 41 inches high, priced \$37.00.

The same, but semi-circular, to fit against a wall, is F-733B and is priced \$30.00. Dia. of lower shelf 30".

Garden sled, W-10, carries tools and "drags" easily, without harming turf. 30x18", priced \$25.00.

CH-20 chair (at right) is priced \$22.00.

CH-27 chair (not shown) \$18.00.

CH-29 settee (not shown) \$37.00.

F-728 plant stand in form of wheat sheaf—40" high—\$19.50. Pots are priced extra.

F-729 same in full round 23" dia., \$31.00.

CH-40A side chair, 31" high, \$10. \$8 in lots of 6. Lustersheen pad, \$4 each.

CH-40B arm chair, \$11.50 each or \$10.35 in lots of 6. Lustersheen pad, \$4.

CH-40D chaise lounge, 62" long and 22" wide, \$31. Lustersheen pad, \$14; figured straw cloth pad, \$17.50.

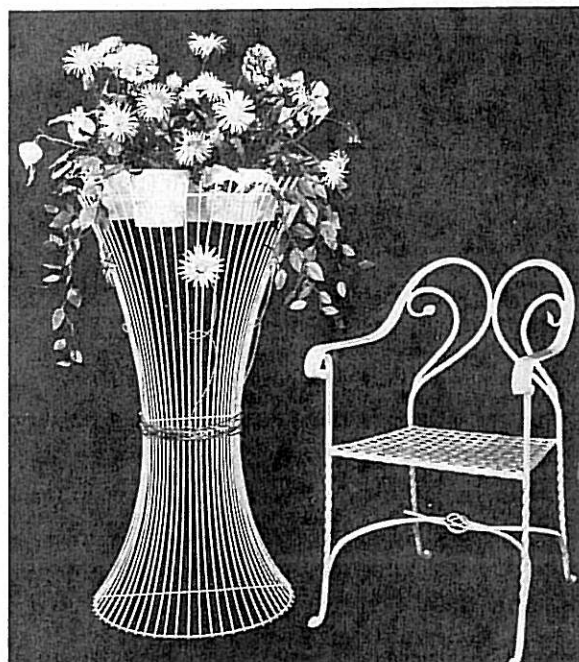
(Lustersheen shades: Blue, Yellow, White, Orange, Green, Black or Red.)

T-184C table, 30"x17"x20" high, \$22.00

F-255 round flower pot, \$3.50 each or \$36.00 dozen.

CH-20 Chair

F-728





F-735 Wall Rack
M-43 and M-44

T-180 Table F-731

T-189 Table

VICTORIAN WIRE ACCESSORIES

F-735 large wall rack is 55 ins. high, 42 ins. wide. Priced \$45.

M-43 feather magazine rack, and M-44 laced magazine rack are 20 ins. high. Priced \$7.50 each or \$7 in lots of 6.

T-180 round table with emerald green metal top, 29 1/2" dia., 23" high. \$17.00.

F-731 wall bracket, 6" pot. \$6.00.

T-189 two-tier table, 12 1/2 x 28" and 26" high. Priced \$24.00 for frame alone.

(Photographed at top right corner):

F-660 flower stand 31" high. \$11 each and \$20 the pair.

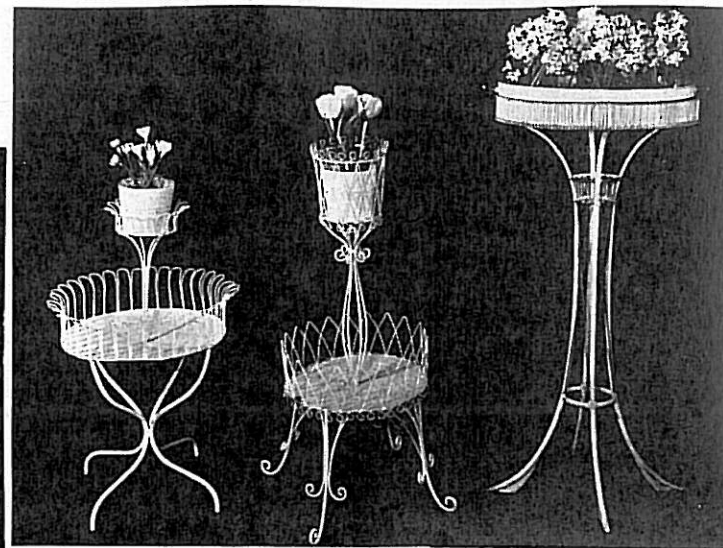
F-730 flower stand 37 1/2" high, \$16.50 each and \$15.50 each if pair is bought.

F-187B plant stand, 43" high. Oval, 19 x 13 1/2 ins. Priced \$32.00.

(Two stands at right):

F-726—25x8" and 35" high. \$19.50. \$18 in pairs.

F-701B—49" high. Priced \$29.50.



F-660

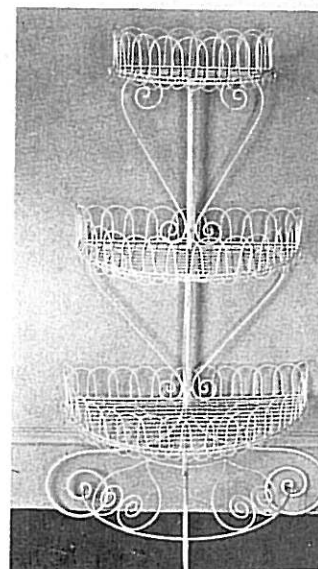
F-730

F-187B



F-726

F-701B

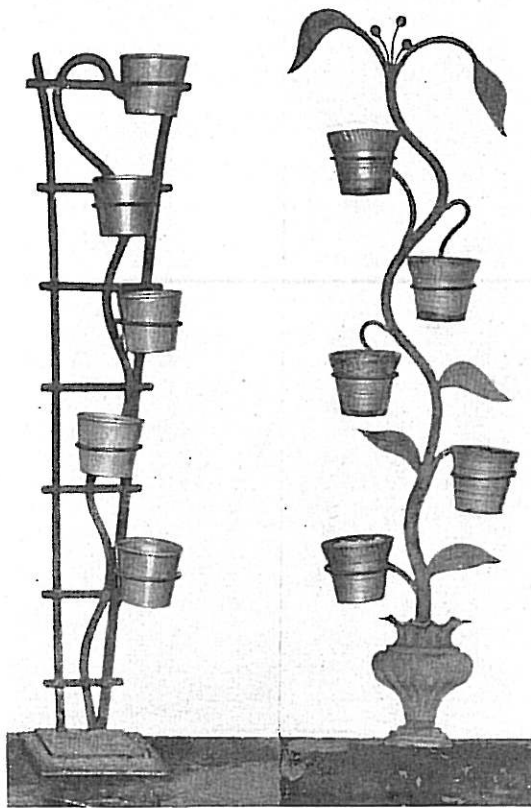


ALL PRICES QUOTED ARE RETAIL

MARY RYAN — 1934



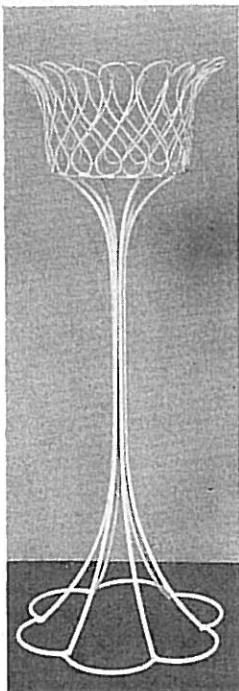
F-661



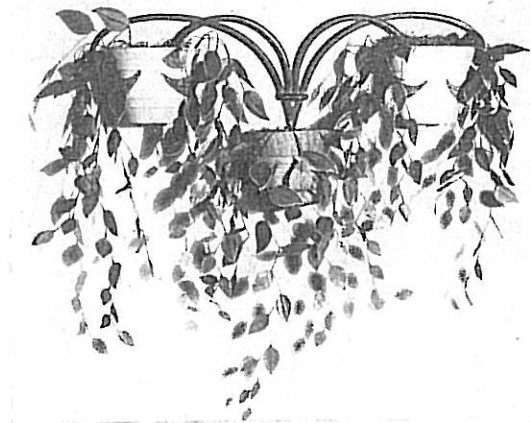
F-631

F-699

ALL POTS ARE PRICED EXTRA
SEE NOTE INSIDE BACK COVER



F-705B



F-673

ALL PIECES AVAILABLE IN RUSTY IRON,
WHITE, COLORS, OR COMBINATION OF
COLORS — AS LISTED ON BACK COVER.

1933 S

CERTAIN TO SELL

Still as strongly in fashion as ever, and
proved 'repeat sellers', these number
tagously be purchased in lots of mor

(Three plant

F-661 plant stand is 75 1/2 inches high

F-631 plant stand is 61 inches high ar

F-699 plant stand is 63 inches high an

(At left, below):

F-673 plant bracket is priced \$6.00
each. 30" wide.

F-705B 32" high Victorian wire plant
stand, \$5.00 each or \$55.00 dozen.

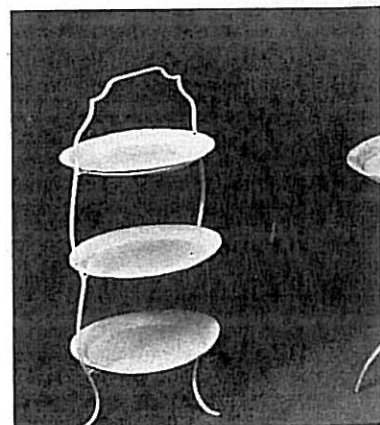
(Three tables

T-172 serving stand with three trays wi
lots. \$4.00 in lots of 25.

T-163 tray table, 28 1/2" high. \$4.00

T-172 three-tray stand, scalloped edge

T-172



ACCESSORIES

AS WELL IN 1934

anking not as innovations but, rather, as
pecially the smaller pieces) may advance
one.

(at top, left):

is priced \$22.00. Pots are extra.

riced \$17.50. Pots priced extra.

riced \$17.00. Pots priced extra.

(Groups at right):

Both the lyre ensemble and the circular ensemble are reproduced from fine period originals and are true classics, perennially popular. The lyre group, particularly, is formal enough for indoor use.

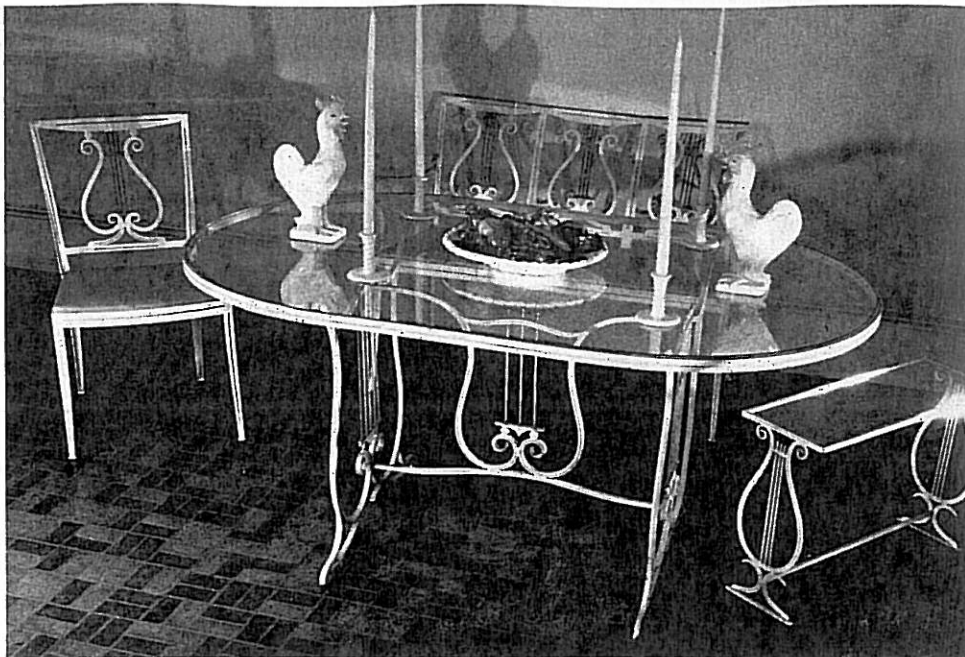
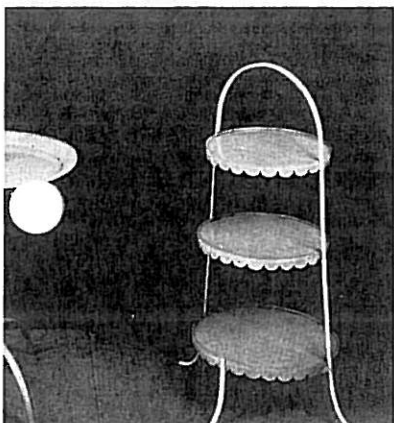
(graphed below):

ed edges. \$5.00 each. \$4.50 in dozen

\$3.00 in lots of 12.

.80 each. \$6.20 each in pairs.

T-126



CH-36 Group

T-174 Table

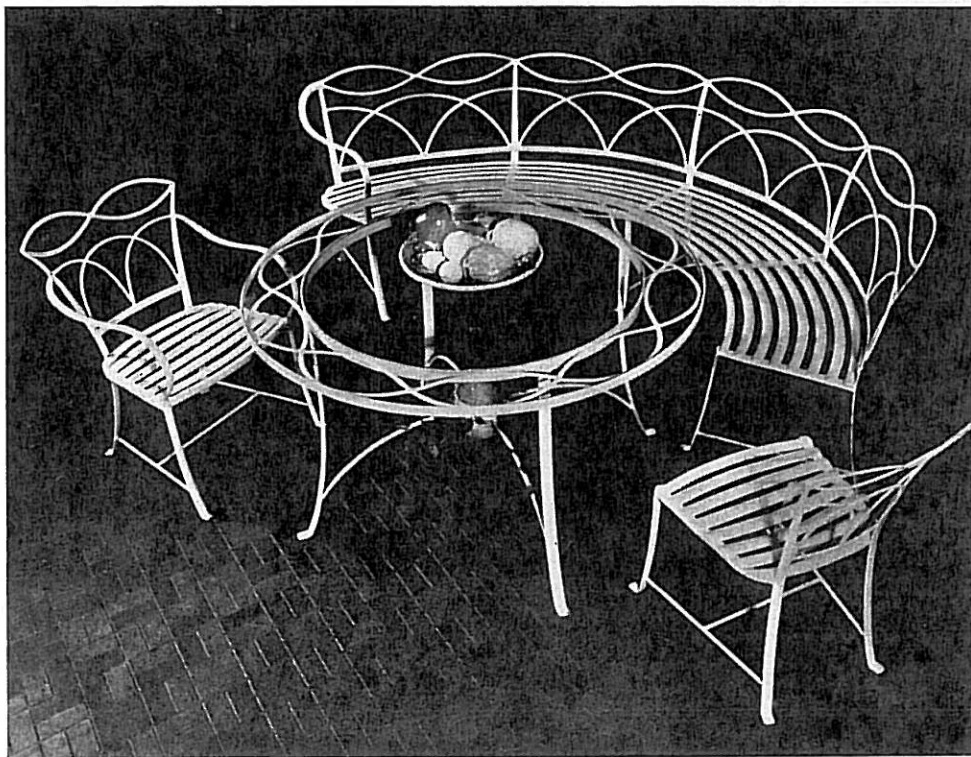
T-171 Table

CH-36B arm chair \$27.00.

CH-36A side chair, \$23.50. . . . CH-36C settee, 40 ins. long, \$45.00.

T-174 oval table, 60x36x29" high, \$37.00 for frame without glass top.

T-171 oblong table, 24 1/2 x 10 x 18" high, \$8.00 each without glass top.



CH-37 Group

T-176 Table

CH-37C semi-circular bench with two arms, \$77.00.

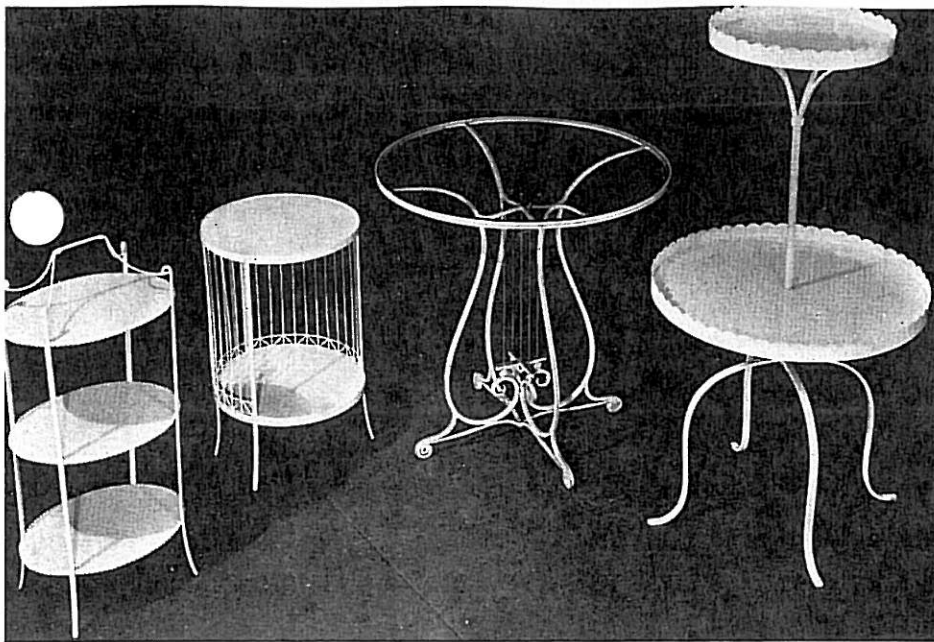
CH-37D quarter-circular bench with two arms (not shown), \$47.00.

CH-37A side chair, \$16.00. . . . CH-37B arm chair, \$19.50.

T-176 round table, 48 ins. diameter. Frame only, \$32.00.

ALL PRICES QUOTED ARE RETAIL

MARY RYAN — 1934



TEN TABLES FOR INDOORS & OUTDOORS

T-183

T-185

T-175

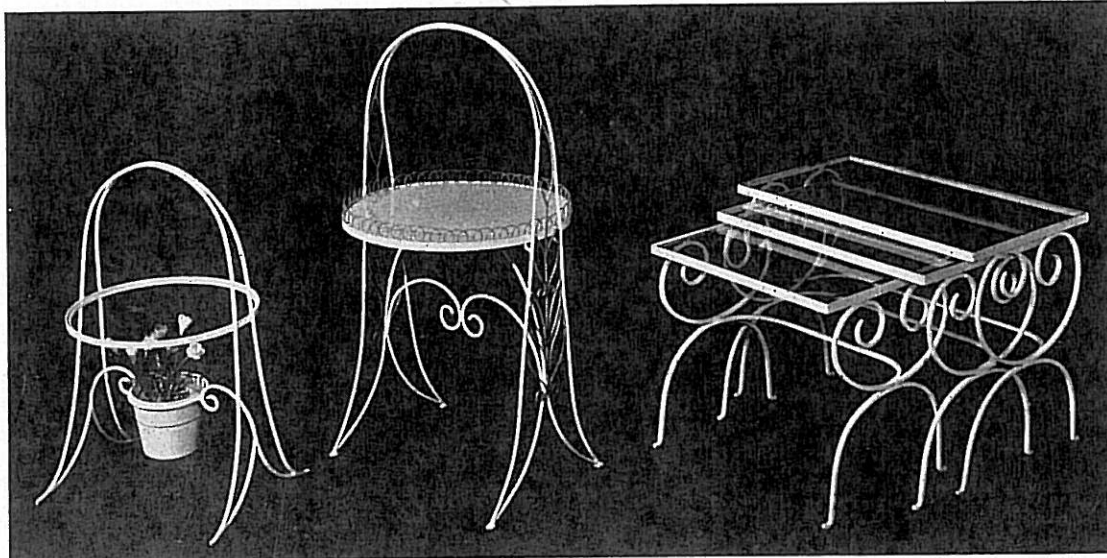
T-186

T-183 three-tiered oval table, 27 inches high.
Priced \$12.00.

T-175 lyre-base table, 22 ins. in diameter (round top) 24 ins. high.
Frame only, \$17.00.

T-185 round stand, 12" diameter, 20" high. \$12.00.

T-186 plant stand, 38½ ins. high; shelves 19 and 12 ins. dia. \$9.50.



T-133

T-181

T-170

T-133 table, 26½ ins. high over all. 14½ ins. dia.
\$6.00 for frame only. Pot extra.

(SEE NOTES INSIDE BACK COVER)

T-181 Victorian table, 37 ins. high; top 19 ins. dia. \$19.00.

T-170 nest of tables; largest, 24x14"; 19½" high. \$18.00 for frames only.

T-178

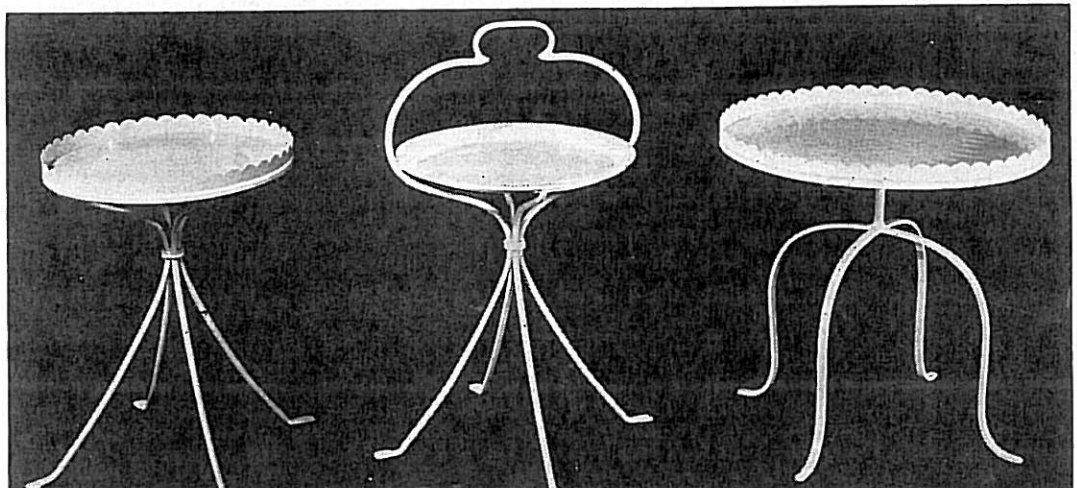
T-145

T-177

T-178 scalloped top table, 14" dia.; 19½" high. \$4.70 each. \$50.40 a doz.

T-145 handled tray table, \$6.00 each. \$5.50 in lots of 6.

T-177, 19" dia., 10" high. \$7.50 each, \$7.00 in lots of 6.

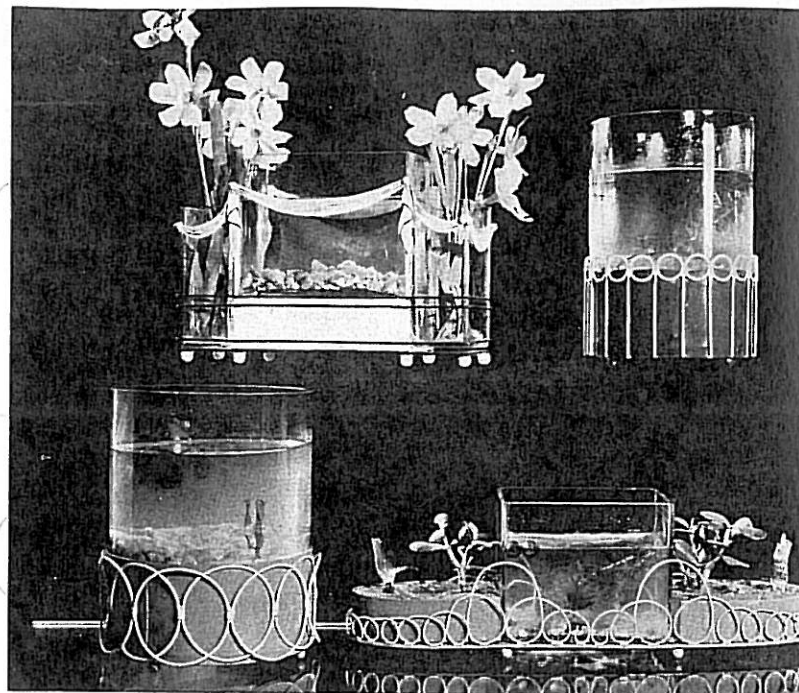


GA-36 aquarium frame of metal—12½ ins. long, 4 ins. wide, 9 ins. high. Complete with glass aquarium. \$17.50.

GA-31 cylindrical aquarium and frame. 6½ ins. dia., 10 ins. high. \$10 complete.

GA-30 cylindrical aquarium, 8¼ ins. dia., 11 ins. high. Complete, \$11.50.

GA-34 combination aquarium and planting dishes in wire frame. 19 ins. long, 5 ins. wide, 6½ ins. high. Complete, \$12.00.



Upper Row: GA-36
Lower Row: GA-30

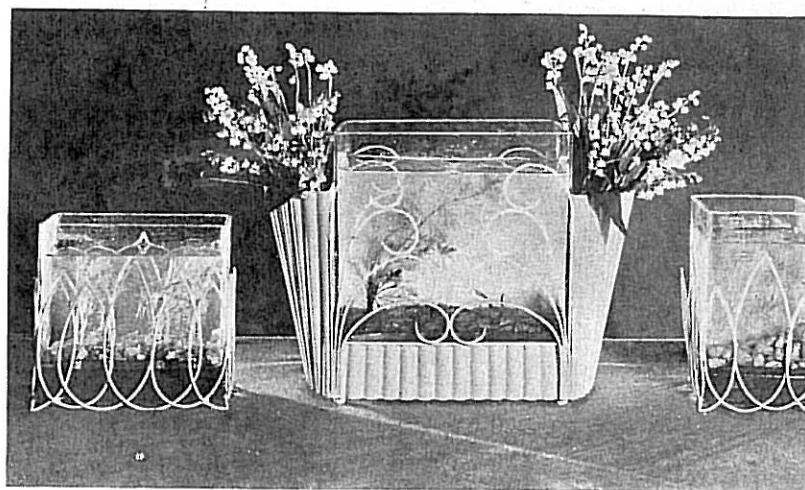
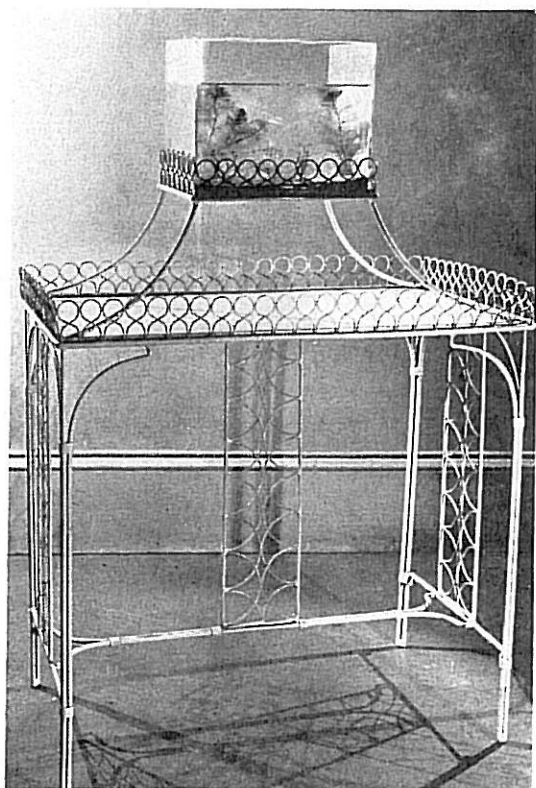
GA-31
GA-34

TABLE AQUARIA

Decorative and Practical—In Metal and Wire

T-184A table with upper frame to hold an oblong aquarium tank. 44½" high over all; 30" long, 17" wide. Price without tank, \$40.00. Price of tank, \$9.00.

T-184A



GA-32

GA-35

GA-33

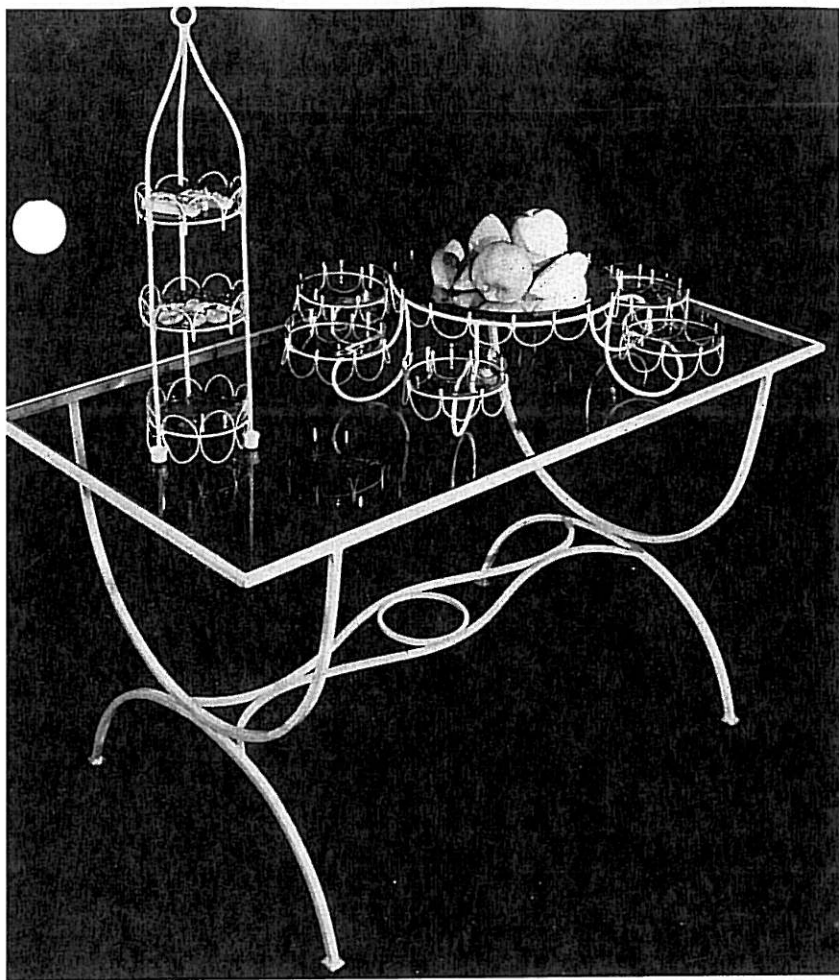
GA-32 aquarium, \$6.50 complete. 7½ inches tall, 7½ inches long and 4 inches wide.

GA-35 aquarium frame with fluted flower holders—15 inches long, 7 inches wide and 12 inches tall. \$18.50.

GA-33 square aquarium, \$5.10 complete. 8½ inches tall and 5 inches wide.

ALL PRICES QUOTED ARE RETAIL

MARY RYAN — 1934



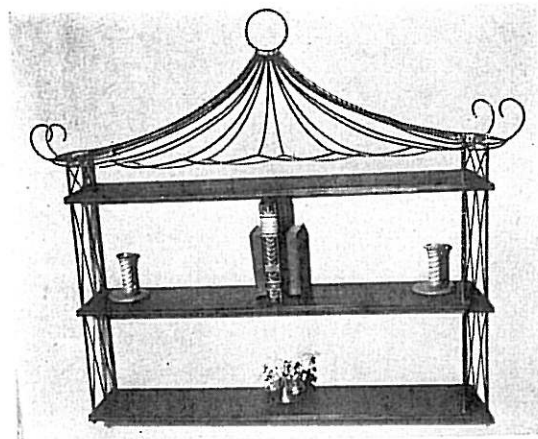
T-191B Table

F-736 and F-737

Hors d'Oeuvre Services

F-736 table centerpiece with plate glass placque for fruit and six glass dishes for hors d'oeuvres or flowers—all in a wire frame. This is 28 ins. across, and is priced \$17.50 complete.

F-737 three-tiered hors d'oeuvre server, 25 ins. high. With glass dishes, \$8.50.



WB-4

Versatile Tables

T-191B (above)—48x26" top, 29" high. \$20.00 frame only.

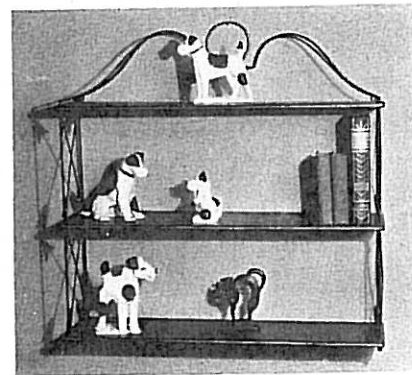
T-151—32 ins. dia., 28 ins. high. \$31 for frame and bowl (without glass top).

T-169



T-151

T-169 star-base table, 24 ins. dia., 20½ ins. high. Frame and metal bowl (without glass top) are priced \$10.70.

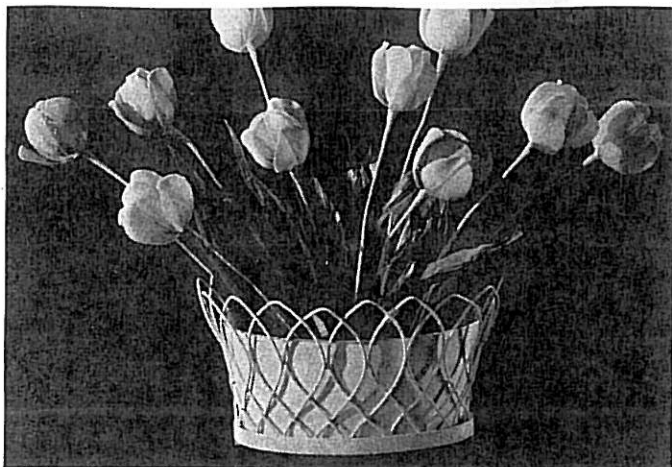


WB-2

Book Shelves

WB-4 pagoda shelves, 33 ins. wide. Priced \$18.00.

WB-2 Directoire shelves, 26 ins. wide. Priced \$12.00.



FLOWER POTS

F-254, in wire with filler, photographed above: Oval shape, 9x12 ins. and 6 ins. high. \$4.50 each. \$48.00 the dozen. Same style but in round shape (shown on page 2, in group with chaise longue etc.) is F-255, 11" dia., 7" high, priced \$3.50 each, \$36.00 dozen.

Photographed at right, reading from top down:

F-251: 5 ins. in diameter, 5 ins. high. \$2.00 each. \$18.00 the dozen.

F-77: 5½ ins. in diameter, 5½ ins. high. \$8.00 dozen.

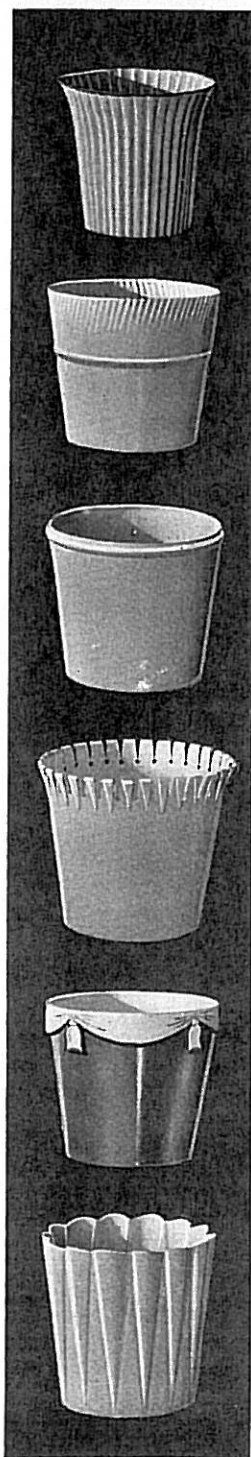
F-80: 5 ins. in diameter, 5½ ins. high. \$10.00 dozen.

F-41: 6 ins. in diameter, 5½ ins. high. \$18.00 dozen.

F-259: 6½ ins. in diameter, 5½ ins. high. \$3.50 each. \$36.00 dozen.

F-260 (not shown): Same style as above, but in smaller size—5½ ins. diameter, 5 ins. high — \$3.00 each. \$30.00 dozen.

F-91: 5½ ins. diameter, 5½ ins. high. \$14.00 dozen (shown at bottom of photo).



Some Personal Recommendations Pertaining to the Leinfelder Line

Please notice the color recommendations on the outside of this back cover sheet. You may find that white and green sets sell better than those in the new pink and yellow shades, but the latter should be represented in your stock, as they have great fashion significance, and the smart magazines are all talking about them.

It is best to buy frames only, in the case of all tables designed for glass. It is easy to have a local glazier measure the frames and fit them exactly—at far less cost than that involved in having glass packed and shipped from the factory. For this reason, we have quoted "frames only" prices throughout this catalog.

Wherever pair, half dozen, dozen, or other quantity prices are quoted here (in addition to single piece prices), it is because these numbers are excellent re-sale numbers, that may wisely be ordered in lots of more than one.

Please be sure to see the beautiful Leinfelder display in my showroom this season. It is the most attractive we have ever had—and early-season selling has never before been so spirited.

All prices quoted are retail. Your usual discount applies, in all instances.

"Always at your service"

Mary Ryan

1934

THESE ARE THE COLORS We're Featuring this Season:

WHITE (of course)

EMERALD GREEN

CROCUS YELLOW

GRECIAN PINK

BIEDERMEIER BROWN



These are the combinations we have found especially effective, especially in the three new sets illustrated at the front of this catalog:

Crocus yellow combined with white

Grecian pink combined with white

Emerald combined with white

Grecian pink combined with brown

White combined with brown



These are the background colors we especially recommend, for displaying this furniture effectively:

White for emerald green furniture.

Deep blue for yellow furniture.

Brown for furniture in white and brown combination, or plain white furniture.

Actual foliage (real or artificial—not painted) for pink furniture.

Otherwise, use white background for pink furniture.



Regarding seats of chairs and settees (this note applies only to the three new groups: CH-41, CH-42 and CH-43). These may be had either covered in a very smart pigskin grain waterproof material that is especially

admirable in white or in brown — or with seats formed by interlaced, or woven, strips of metal, sprayed with color like the frame of the piece. Price is the same for either type of seat.

LEINFELDER DESIGNS ARE PROTECTED BY COPYRIGHT

225 FIFTH AVENUE

MARY RYAN

NEW YORK CITY

34-12