

COLOR & FASHION NOTES

for the Spring 1933 Interior (or Exterior!)

White was never so inseparable from the fashionable scene. We recommend that both iron and rattan furniture be chosen with frames in white whenever the design is sufficiently interesting and elegant to permit the use of this most sophisticated of colors.

Silhouettes are the spice in the recipe for a charming room of today. The backs of chairs and sofas make lovely outlines against a wall -- growing plants in romantic holders etch a tracery of shadow upon the mist of sunshine in a window -- transparent glass forming the top of a table lets the silhouette of a graceful base design come through....

19th Century designs are immense favorites in the mode. The trick is to interpret our adaptations of Victorian and French Empire patterns in materials and colors that give lightness and suggest the modern spirit (as do these Leinfelder iron and wire pieces, so ideally).

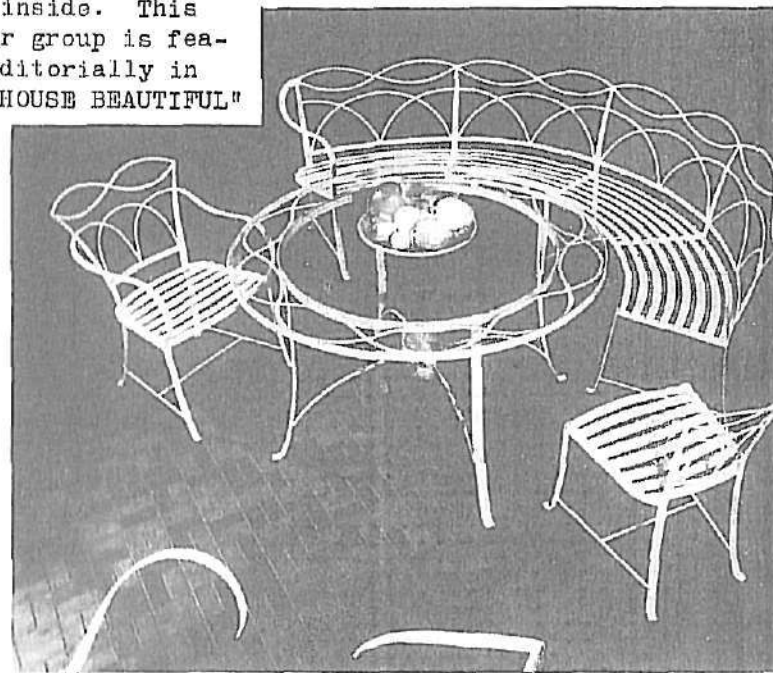
Permanence is much desired, when furniture is chosen today. The clients of our best decorators and our leading shops appreciate lasting worth, both aesthetic and intrinsic. We believe this fine iron furniture has a wide appeal.

"Always at Your Service"

Mary Ryan

225 Fifth Avenue,
New York City.

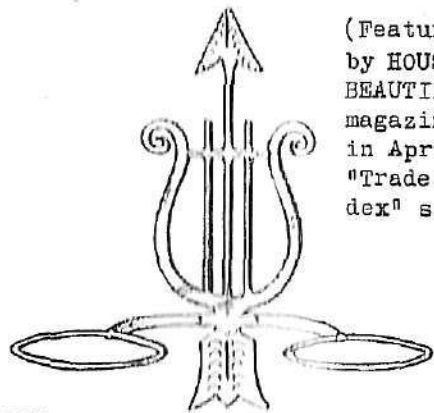
THE SMARTEST CIRCLES in good furniture society are pictured here - and priced inside. This circular group is featured editorially in April "HOUSE BEAUTIFUL"



LEINFELDER
FURNITURE

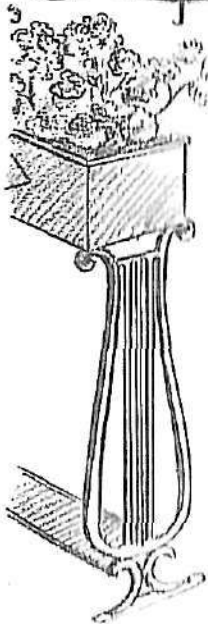
Exclusive Designs of Fine
Wrought Iron in the Best
Classical Tradition

"mary ryan's little book"



(Featured
by HOUSE
BEAUTIFUL
magazine
in April
"Trade In-
dex" sec.)

The Lyre Motif



HARPS AND FLOWERS make a romantic alliance, and the winged dart placing the harp (or lyre) of the wall bracket at top of page only serves to emphasize the classic perfection of this fashion-motif. This bracket is 17 ins. high, 12 ins. wide; F 722, \$4.30; (complete with two fluted pots, \$8.30). The lyre plant stand sketched just at left is 37 ins. wide, 40 ins. high; F 725, priced \$14.00.

The table sketched at right, is T 175, at \$16 (frame alone) or \$28 with the glass top.

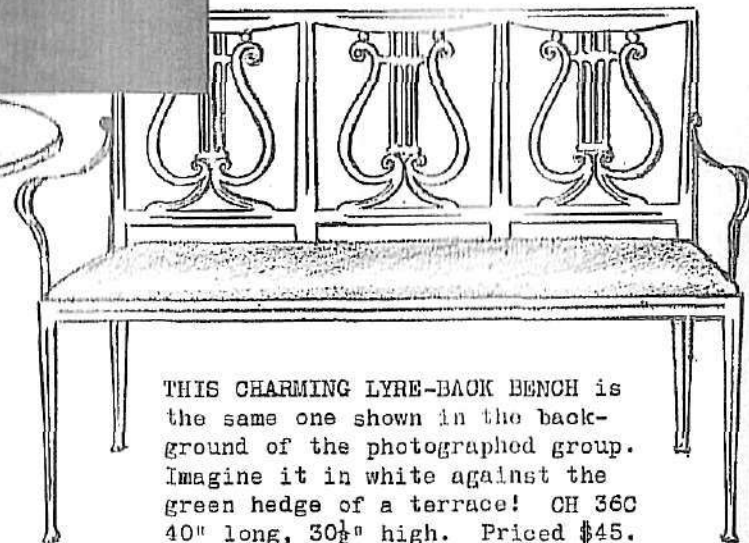
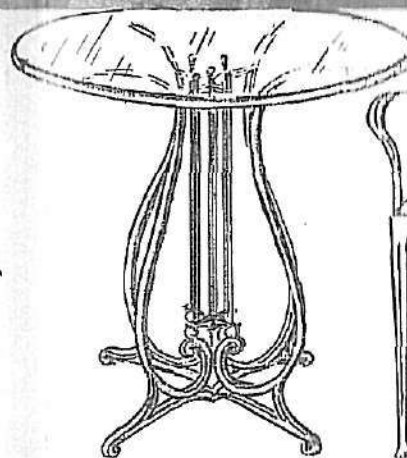


Here is lyric classicism at its best. Perfect Grecian proportioning, with both grace and delicacy of silhouette and a quite Spartan strength of structure!

THE OVAL TABLE in the photograph at left - without the glass top - is priced \$37, and is 29 inches high, 60 inches long, and 36 inches wide. (\$96 with glass top). T 174.

THE HIGH CHAIR, CH 36A, \$23.

THE SMALL, OBLONG TABLE, 18 ins. high with top 24½x10 ins., without glass top, \$6.60. (\$10.10 with glass). T 171.



THIS CHARMING LYRE-BACK BENCH is the same one shown in the background of the photographed group. Imagine it in white against the green hedge of a terrace! CH 36C 40" long, 30½" high. Priced \$45.

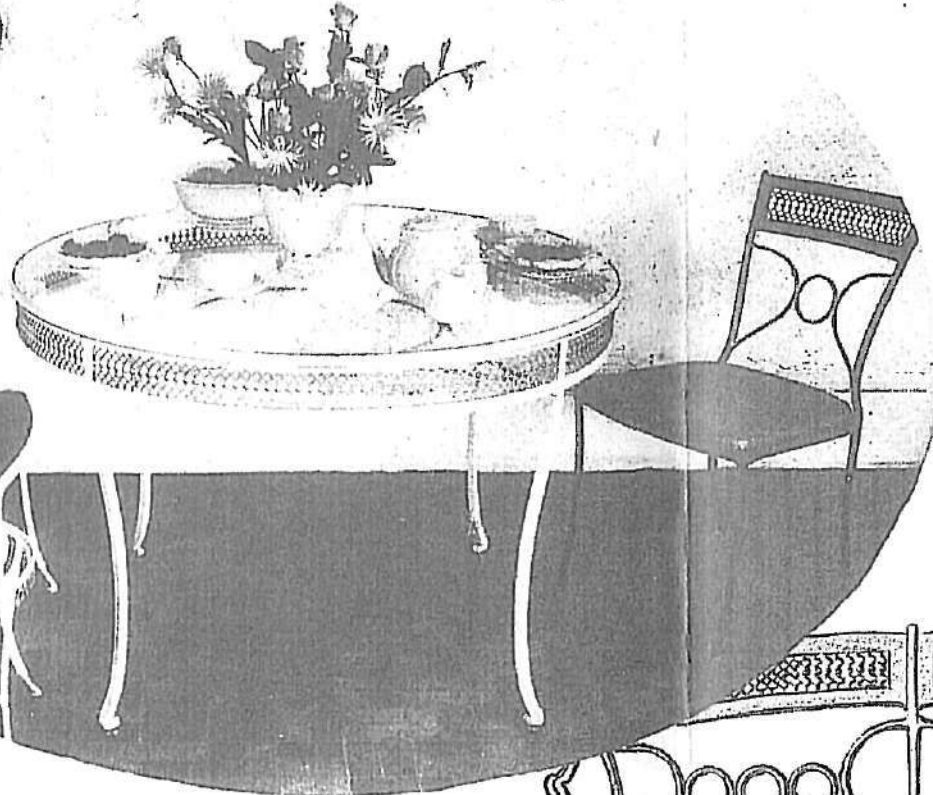
ALL PRICES QUOTED ARE RETAIL

mary ryan's little book

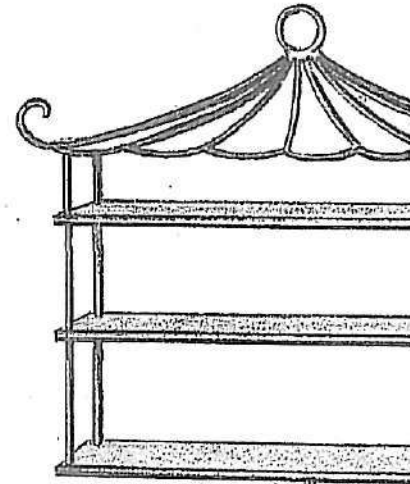
April, 1933.

Galler
Motif

Classic Period Designs



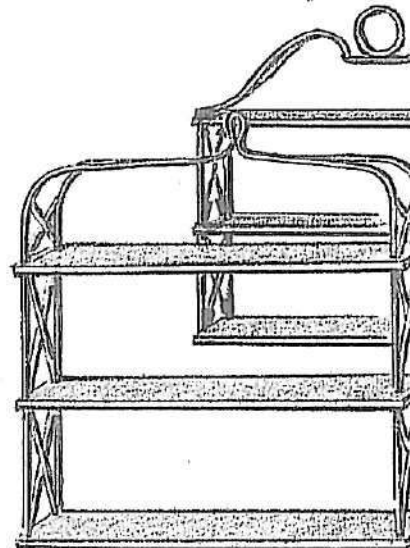
Whether one selects the "Metal Gallery Motif" as the decorative theme for a breakfast room, a garden room, or a terrace loggia, the SETTEE pictured below will be desired. It is 37½ inches long, priced \$40. CH 33C. Upholstery: Waterproof grass cloth.



PAGODA BOOK SHELF, above, is 33" wide - WB 4 - \$18.00 each.

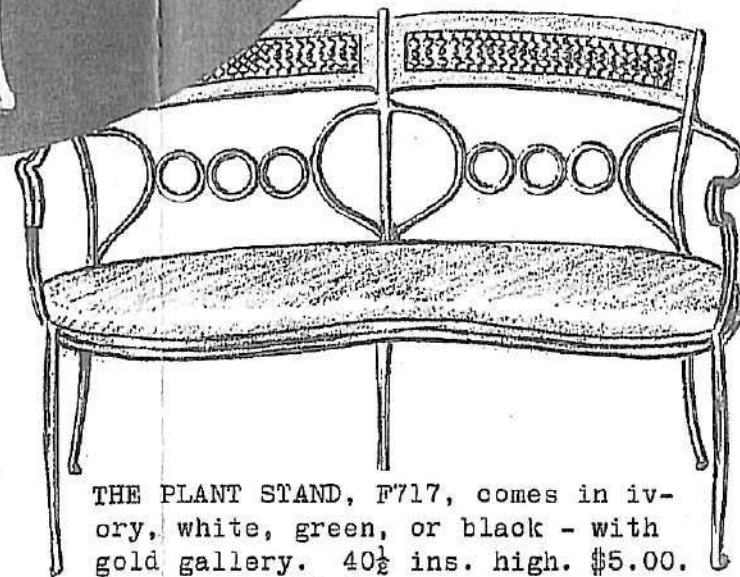
DIRECTOIRE BOOK SHELF in background below - 25" wide - WB 2. \$12.

SIMPLE WIRE BOOK RACK in foreground below - 26" wide - WB 3. \$12.50.



THE ROUND GLASS-TOPPED TABLE in the inviting breakfast setting pictured here is T 160 - priced \$30 for frame, or \$70 with glass included. The arm chair, CH 33B, \$25. Side chair, CH 33A, \$19.

THE SMALL ROUND TABLE is 14½ ins. in diameter, 18 ins. high. T 161. Without glass top, \$7.00. Complete with glass top, \$11. Pot, \$1.00.



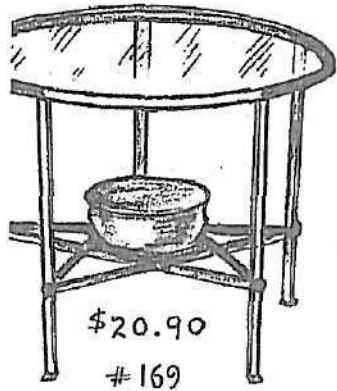
THE PLANT STAND, F717, comes in ivory, white, green, or black - with gold gallery. 40½ ins. high. \$5.00. Flower pot, \$2.50 extra.

mary ryan's little book

TABLES TO LIGHTEN THE "LUGGAGE" PROBLEM

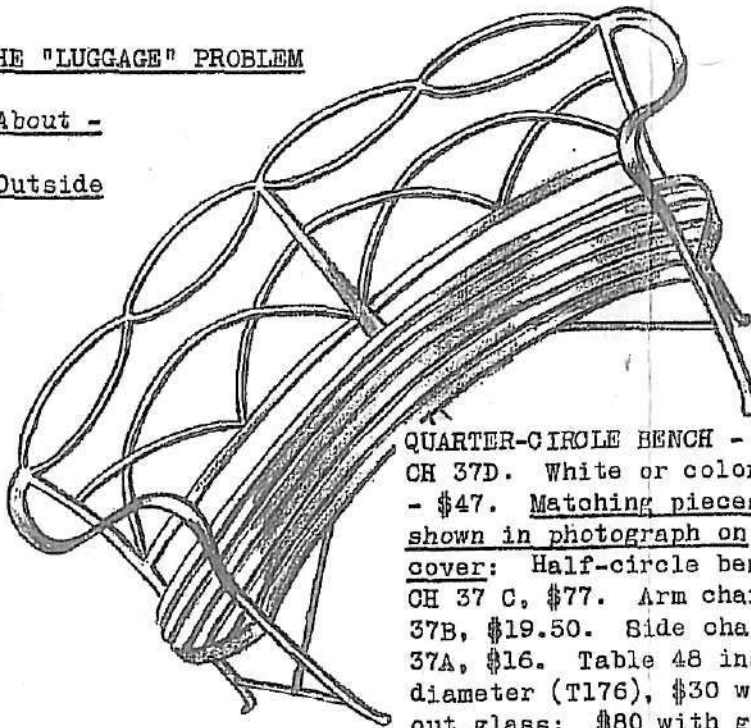
FOR INFORMAL SERVICE IN ODD . . .DY SPOTS

Light to Lift About -
Safe to Leave Outside

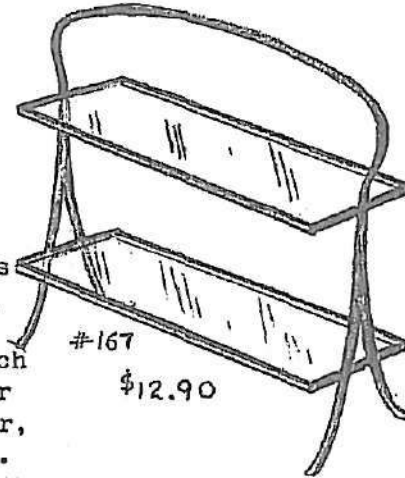


\$20.90
#169

(Above)
Glass-topped,
with metal nut
or pretzel bowl.

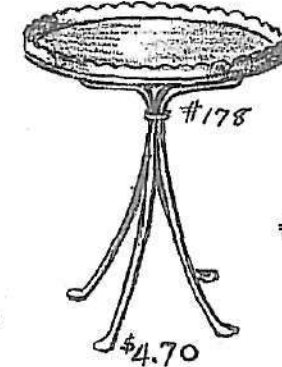


QUARTER-CIRCLE BENCH -
CH 37D. White or colors
- \$47. Matching pieces
shown in photograph on
cover: Half-circle bench
CH 37 C, \$77. Arm chair
37B, \$19.50. Side chair,
37A, \$16. Table 48 ins.
diameter (T176), \$30 with-
out glass; \$80 with gl.



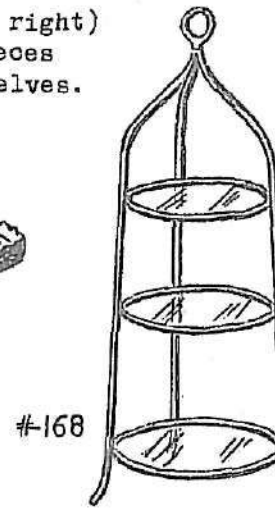
#167
\$12.90

(Below, left & right)
Two tiered pieces
with glass shelves.



#178

\$4.70



#168

\$12.30

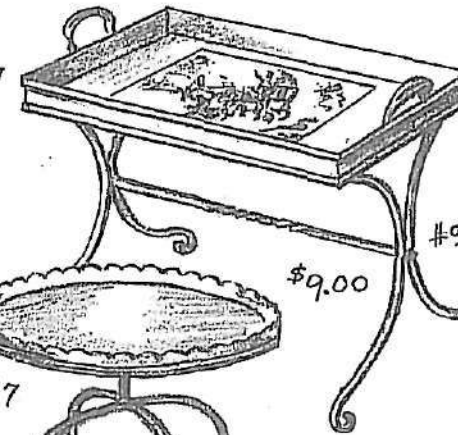
Refreshment table
with removable tray
(right).

The Glass-Top Pieces:

T 169 round table with metal bowl - 24"
dia.; 20 1/2" h. (Prices beside pictures in-
clude glass.) Without glass, \$9.30...167
2-tier table is 23x14", 26" h. Without
glass, \$6.50...168 3-tier muffin stand is
37 1/2" h. Without glass, \$6.70.

Sketched in lower left corner: 163 tray
stand, 14" dia.; 126 3-tray stand (remova-
ble trays) is 27" high; 172 scalloped
stand, 27" high.

Sketched at right: Two scalloped rail
tables are 178 with 14" diameter and
177 with 19" diameter; both 19 1/2" high. The
removable tray-top table, 91, is 22x16",
and 19" high.



#9

\$9.00

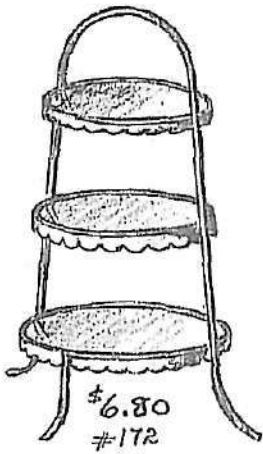
#177

\$7.00

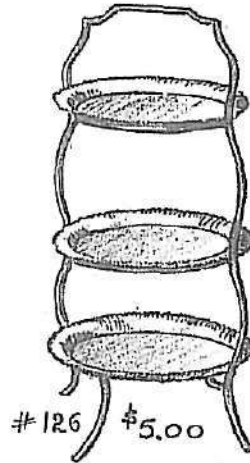
With scalloped rail
- combining two c
ors very smartly.



\$3.50
163



\$6.80
#172



#126 \$5.00

Fashionable hos-
tesses use these
in pairs or trios.

mary ryan's little book

ALL PRICES QUOTED ARE RETAIL

April, 1